

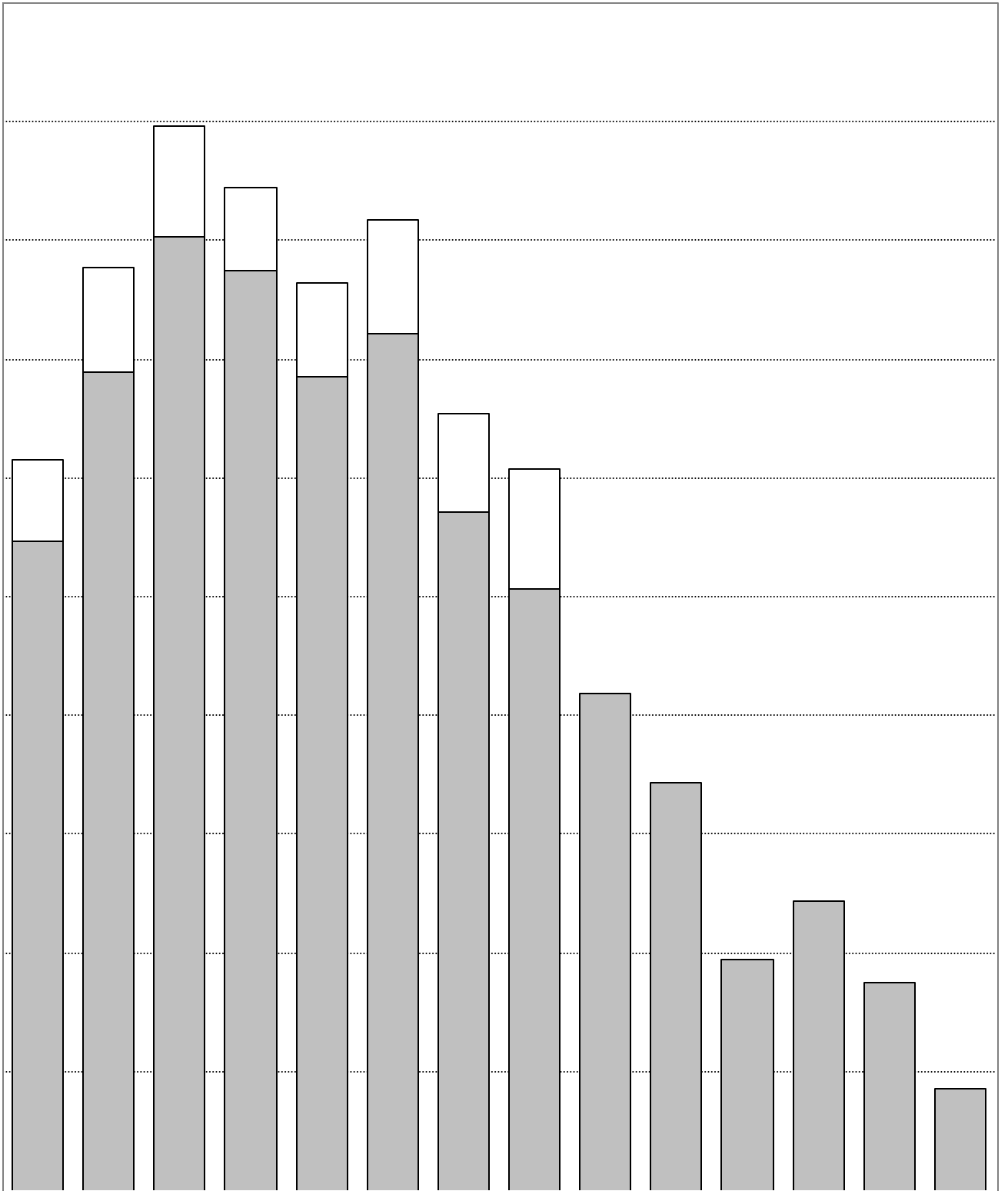


## **Introduction**

### **Classroom Utilization 1997/98**

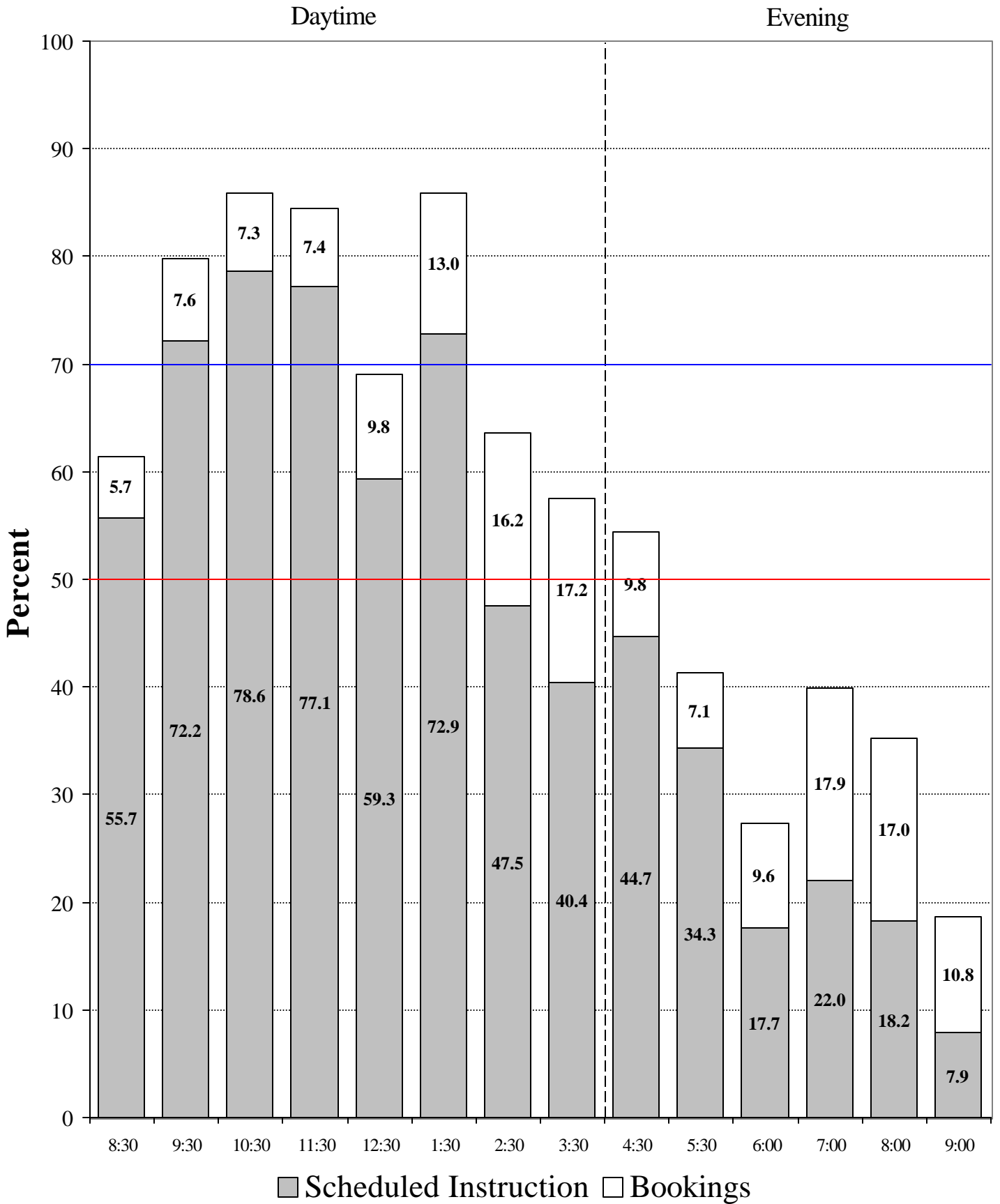
#### ***Methodology***

This report displays the level of classroom use as of October 1997. Two components are identified: scheduled instruction and bookings. Scheduled instruction consists of regular classroom instruction and includes lectures, tutorials, some discussion groups, and labs offered in classrooms. Bookings consists of more casual classroom use, such as staff and department meetings, clubs and course union usage, and conferences. No bookings are included with scheduled instruction data. However, about 10% of bookings are actually tutorials and other course sections associated with regular courses. They usually appear here due to limitations in the university course database, which cannot handle courses which meet in one room for a part



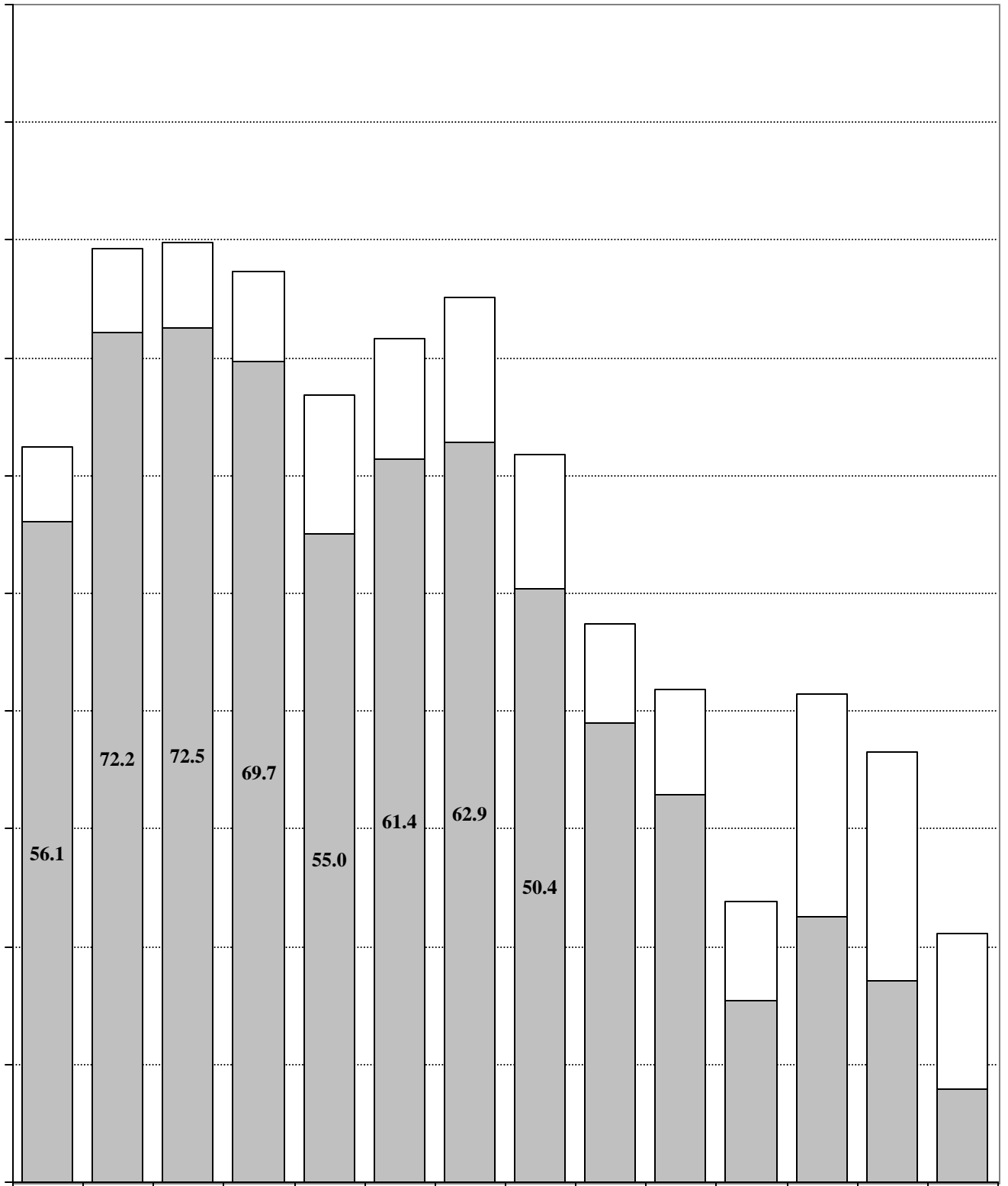
Source: Scheduling data from the University of Victoria's Student and Bookings Databases, October 1997.

## Chart 2: Tuesday Room Utilization By Start Time

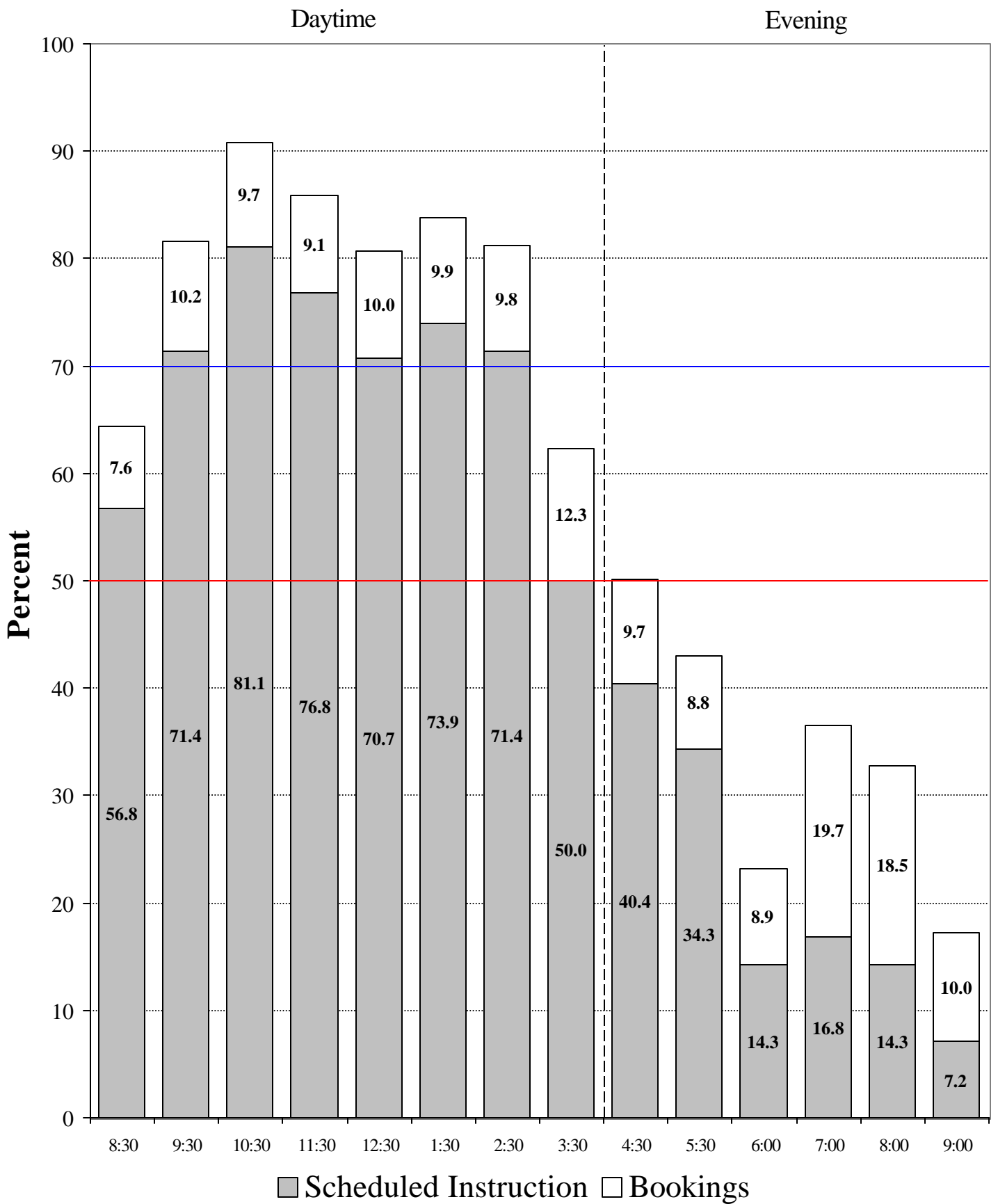


Source: Scheduling data from the University of Victoria's Student and Bookings Databases, October 1997.

### Chart 3: Wednesday Room Utilization By Start Time

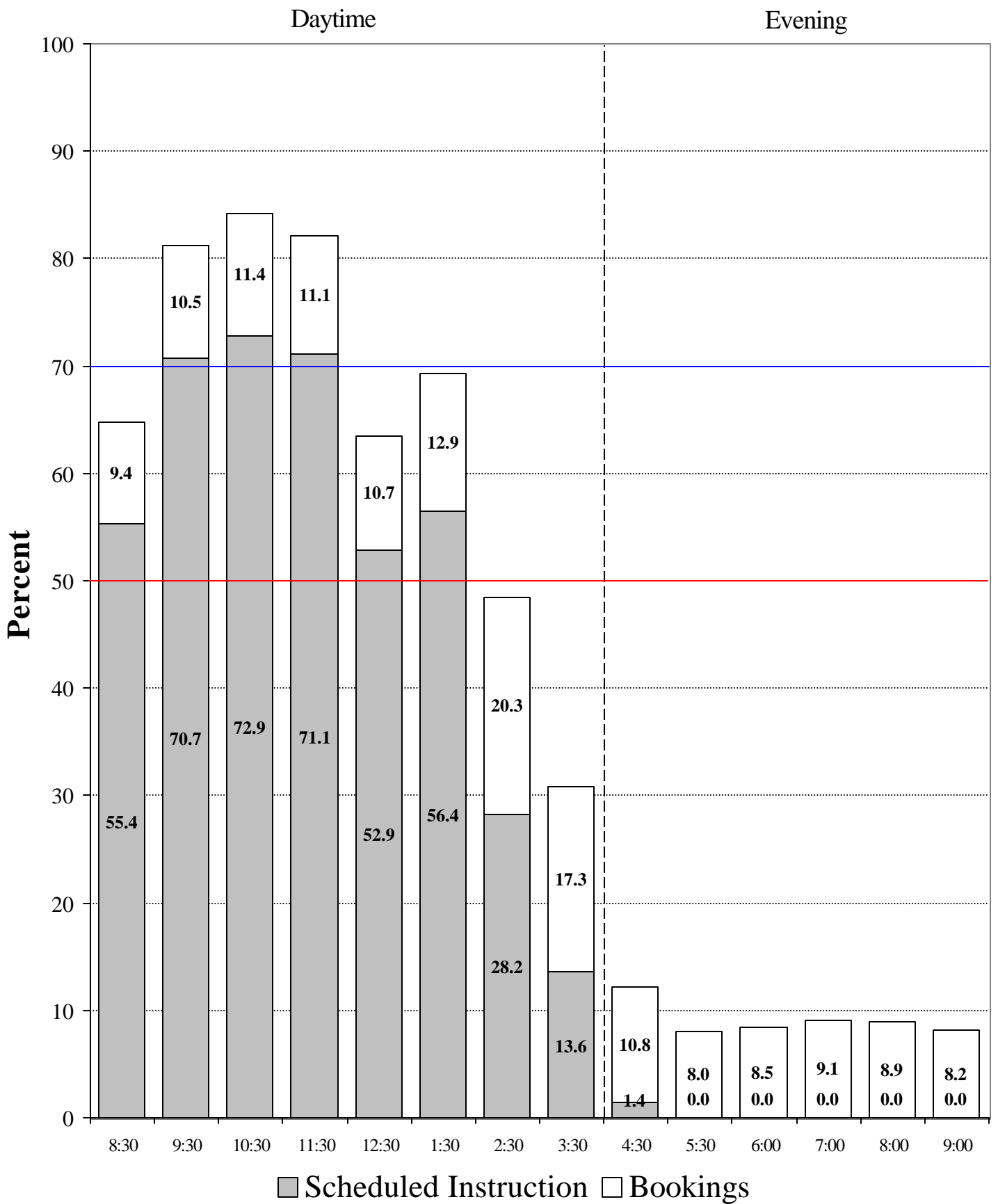


# Chart 4: Thursday Room Utilization By Start Time



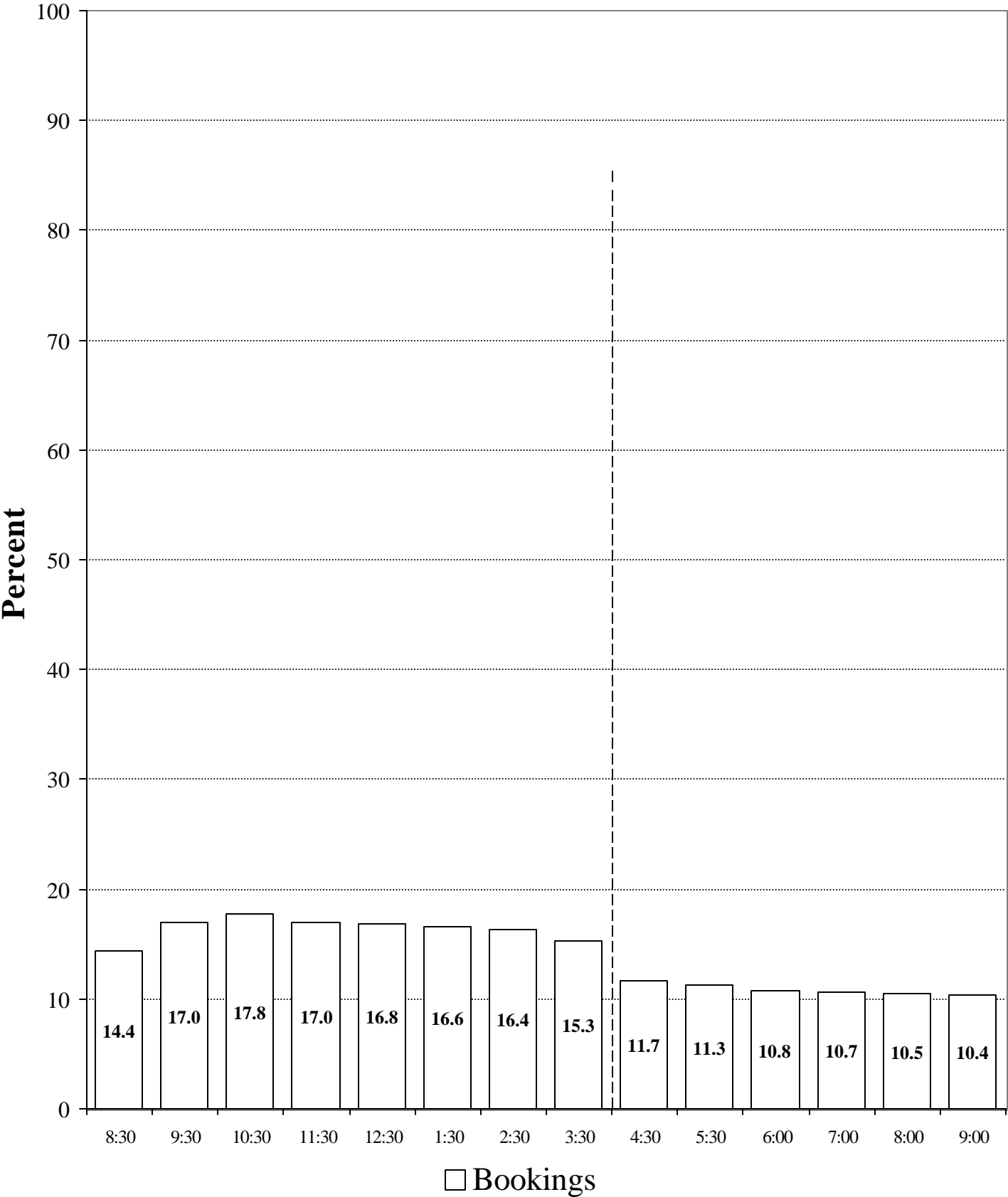
Source: Scheduling data from the University of Victoria's Student and Bookings Databases, October 1997.

# Chart 5: Friday Room Utilization By Start Time



Source: Scheduling data from the University of Victoria's Student and Bookings Databases, October 1997.

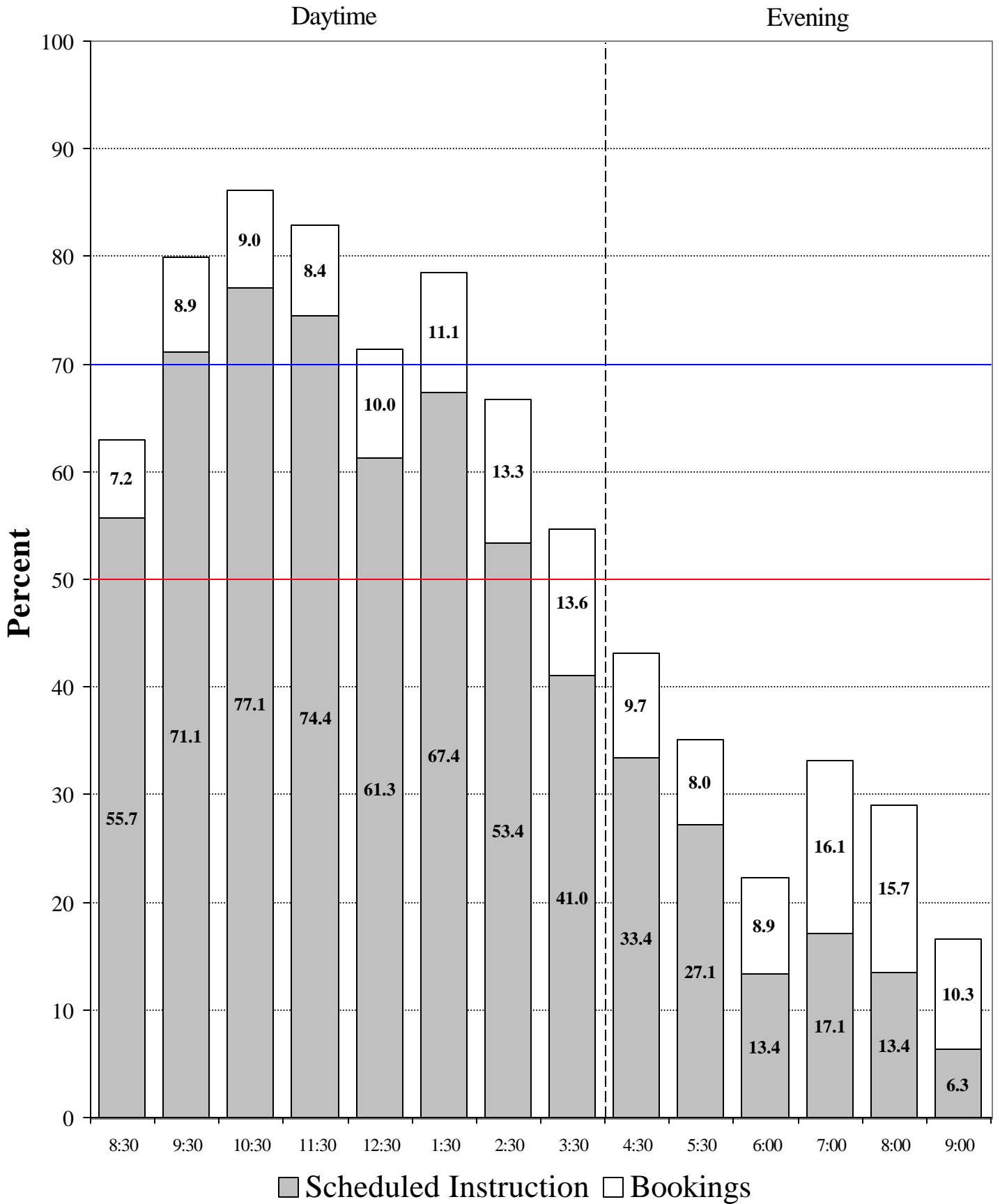
# Chart 6: Saturday Room Utilization By Start Time



Source: Scheduling data from the University of Victoria's Student and Bookings Databases, October 1997.



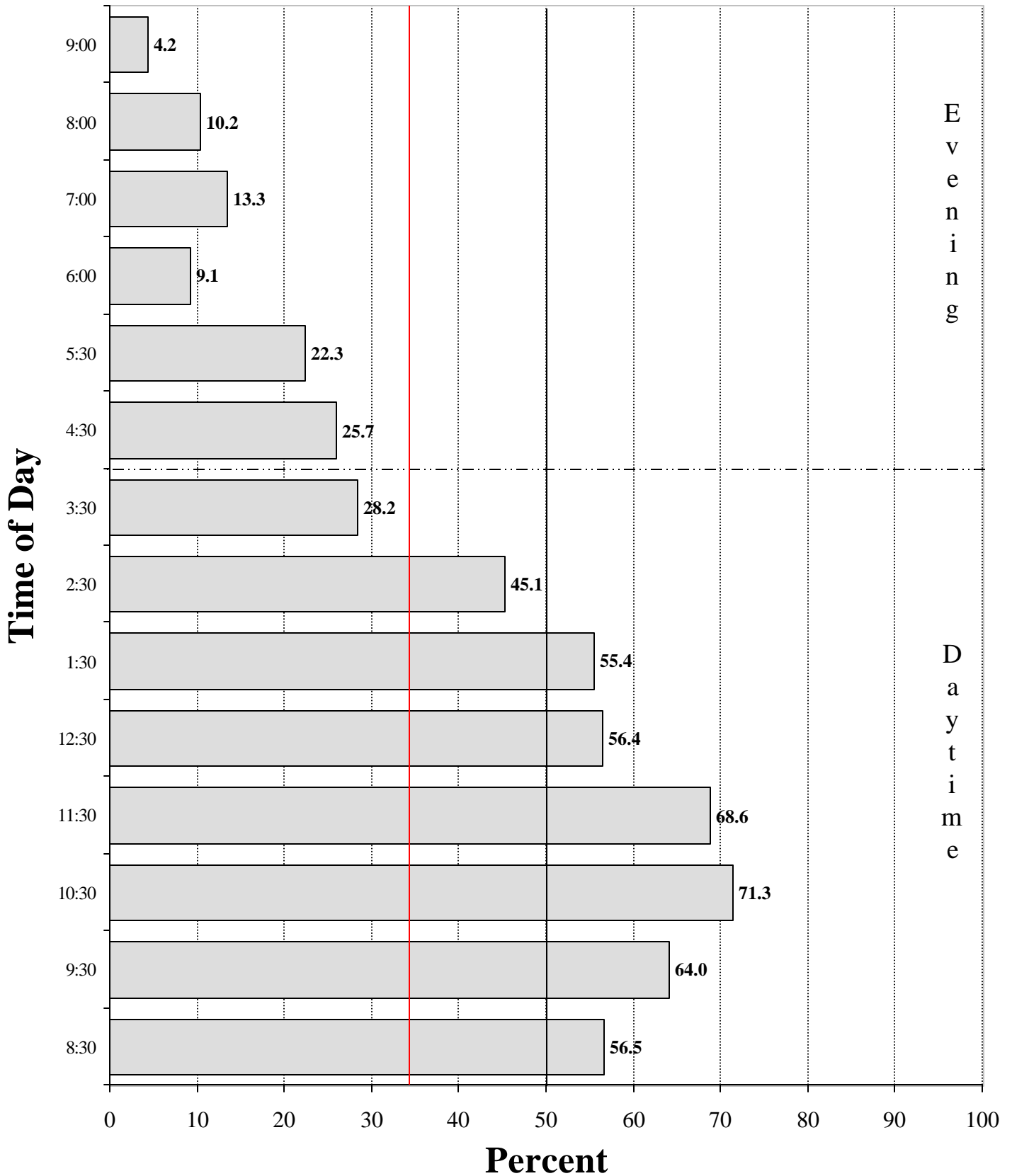
# Chart 7: Average Monday to Friday Room Utilization By Start Time



Source: Scheduling data from the University of Victoria's Student and Bookings Databases, October 1997.

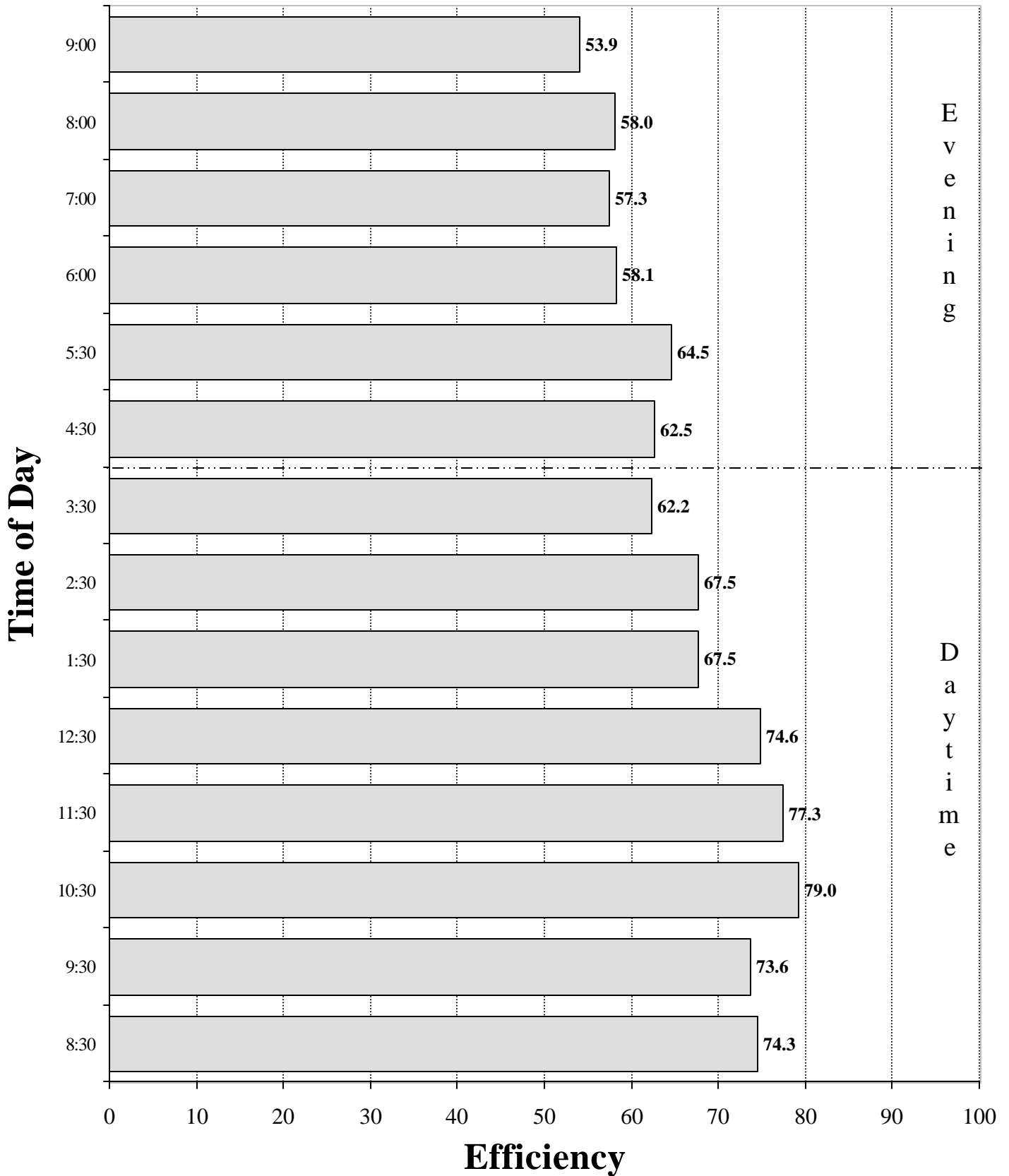
**Chart 8: Monday - Friday Seat Utilization  
for Scheduled Instruction By Start Time**

## Chart 9: Average Monday to Friday Seat Utilization For Scheduled Instruction By Start Time



Source: Scheduling data from the University of Victoria's Student and Bookings Databases, October 1997.

**Chart 11: Average Monday to Friday Seat Utilization of Occupied Rooms for Scheduled Instruction By Start Time**



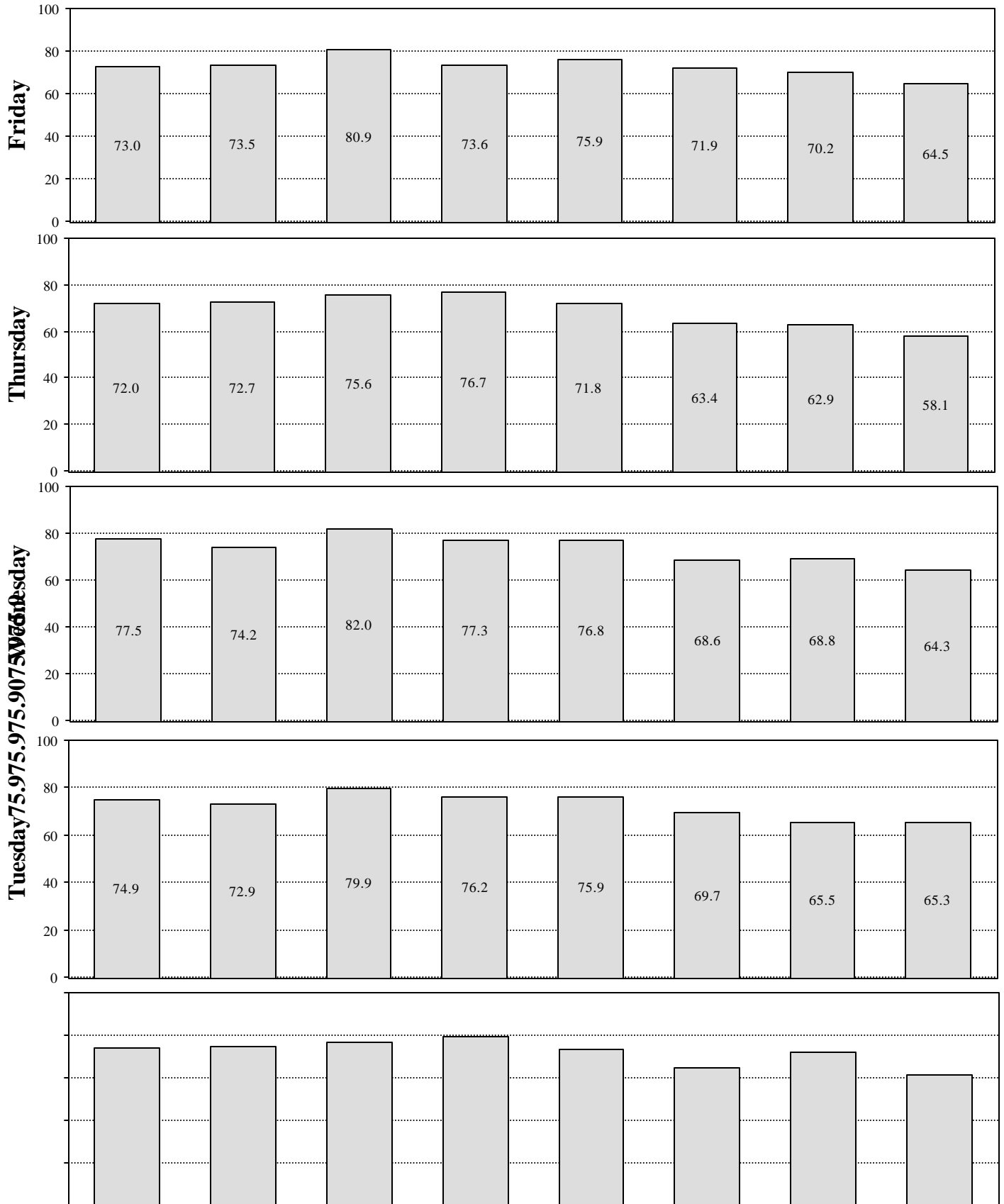
**Note: Percentages are based on the total number of seats in occupied rooms only.**

Source: Scheduling data from the University of Victoria's Student and Bookings Databases, October 1997.

*Institutional Analysis*

*July 20, 1998*

# Chart 10: Monday - Friday Seat Utilization of Occupied Rooms for Scheduled Instruction By Start Time



**Note: Percentages are based on the total number of seats in occupied rooms only.**

Source: Scheduling data from the University of Victoria's Student and Bookings Databases, October 1997.

Institutional Analysis

July 20, 1998

**TABLE 1****1997/98 Classroom Inventory**

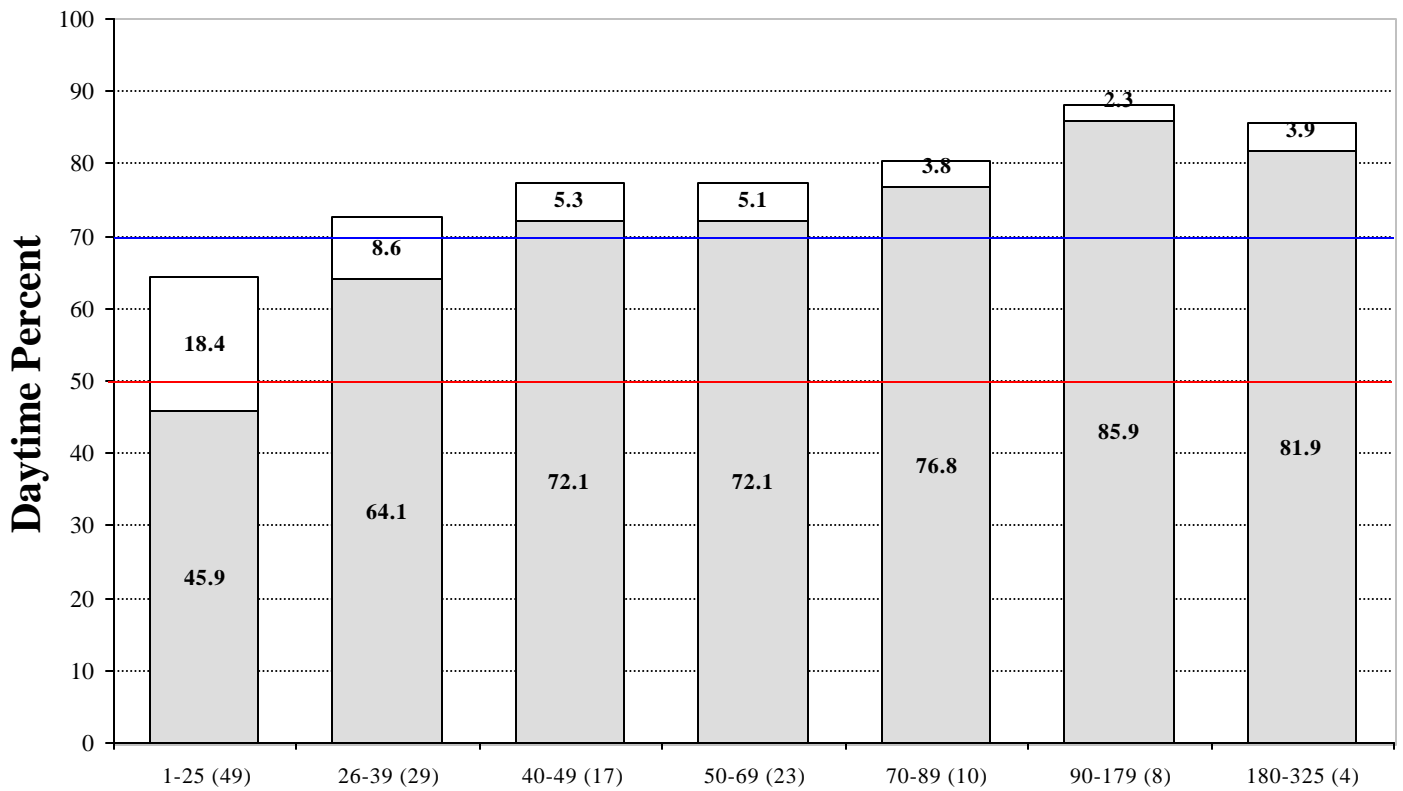
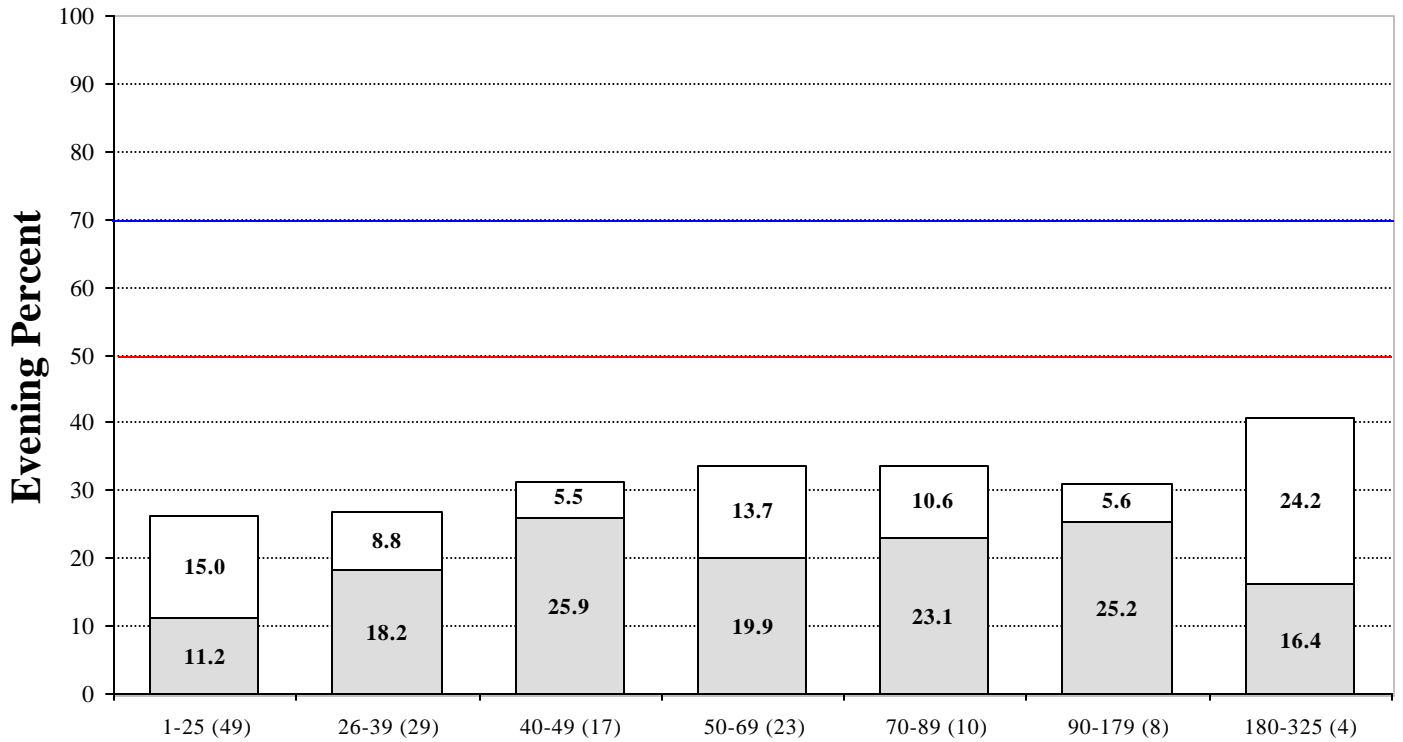
<b>Seating Capacity</b>	<b>No. of Rooms</b>	<b>No. of Seats</b>	<b>Area in Sq. M.</b>	<b>Sq. M. per Seat</b>	<b>Monday - Friday Daytime</b>		
					<b>%Sched Inst Room Use</b>	<b>%Seat Use</b>	<b>%Total<sup>1</sup> Room Use</b>
<b>1-25</b>	49	849	1,709.5	2.01	45.9	32.1	64.3
<b>26-39</b>	29	952	1,562.7	1.64	64.1	46.0	72.6
<b>40-49</b>	17	749	1,139.7	1.52	72.1	51.0	77.5
<b>50-69</b>	23	1,334	2,059.2	1.54	72.1	50.5	77.2
<b>70-89</b>	10	735	1,026.4	1.40	76.8	59.6	80.5
<b>90-179</b>	8	940	1,123.0	1.19	85.9	67.8	88.2
<b>180-325</b>	4	1028	1,118.2	1.09	81.9	58.5	85.8
<b>University Totals</b>	<b>140</b>	<b>6,587</b>	<b>9,738.7</b>	<b>1.48</b>	<b>62.7</b>	<b>52.3</b>	<b>72.9</b>

<sup>1</sup>These percentages include both scheduled instruction and bookings.

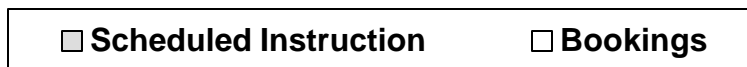
Source: Scheduling data from October 1997 Student and Bookings Databases.

Institutional Analysis  
July 20, 1998

## Chart 12 - Average Monday to Friday Room Utilization by Seating Capacity



**Seating Capacity (Number of Classrooms)**



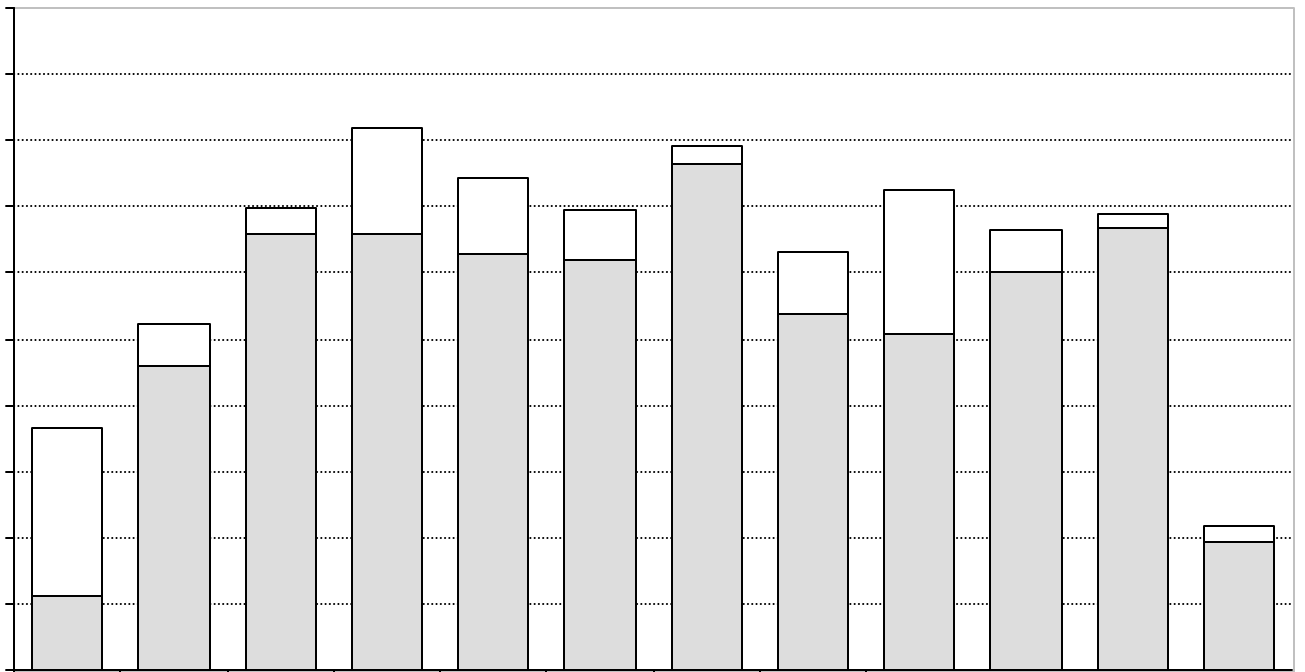
**TABLE 2**  
**1997/98 Building Inventory**

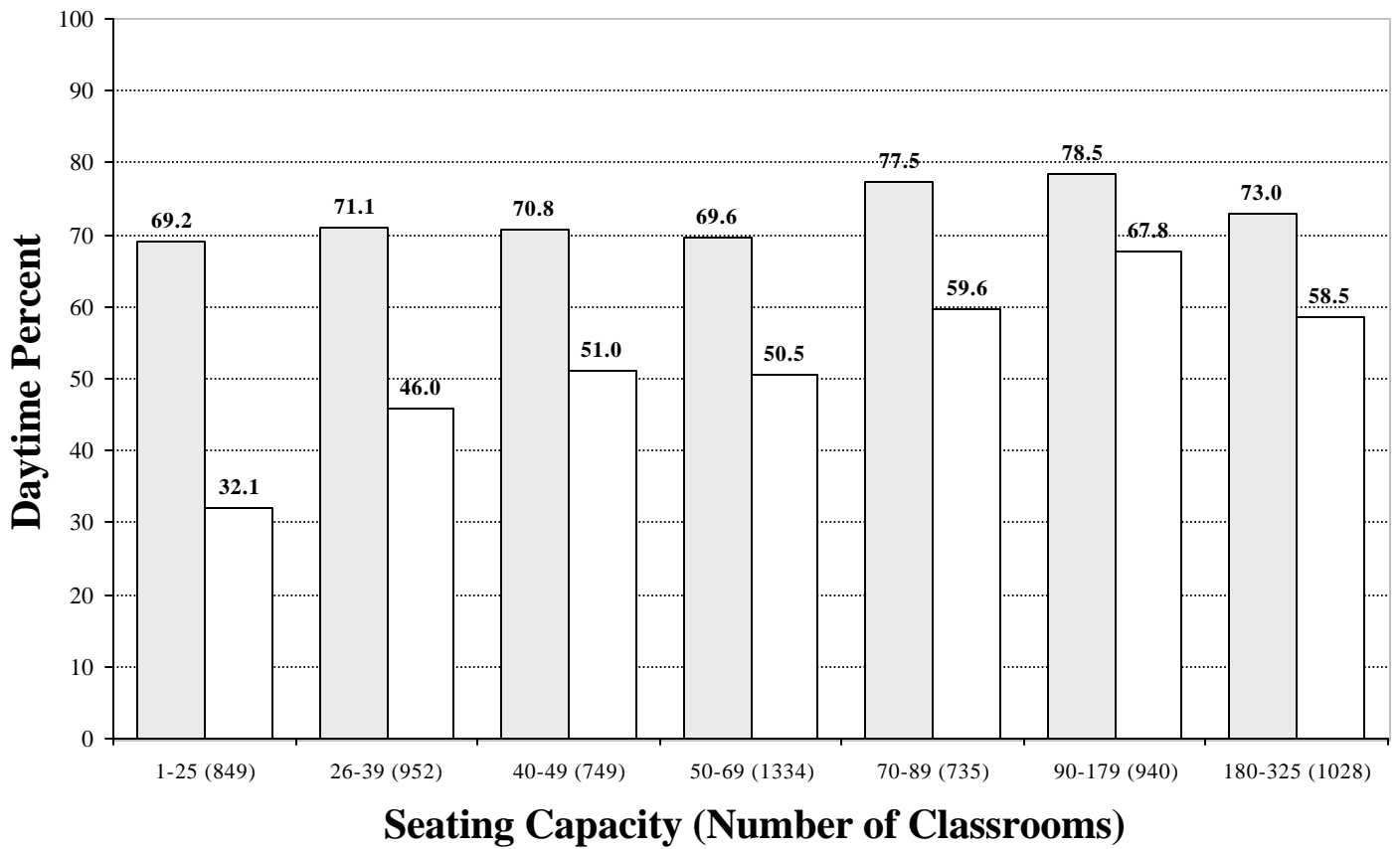
Building	No. of Rooms	No. of Seats	Area in Sq. M.	Sq. M. per Seat	Monday - Friday Daytime %		
					%Sched Inst Room Use	%Seat Use	%Total <sup>1</sup> Room Use
<b>Business &amp; Economics</b>	1	30	68.2	2.27	11.3	4.6	36.5
<b>Begbie</b>	6	540	919.1	1.70	45.8	38.0	52.1
<b>Classroom</b>	19	801	1,263.3	1.58	66.0	56.5	69.7
<b>Clearihue</b>	48	1,666	2,463.6	1.48	65.7	54.4	81.8
<b>Cornett</b>	18	1,041	1,352.4	1.30	62.9	56.8	74.3
<b>Cunningham</b>	2	68	100.7	1.48	61.9	39.0	69.5
<b>Elliott</b>	11	775	1,034.2	1.33	76.5	59.02	79.2
<b>Fine Arts</b>	4	112	255.5	2.28	53.8	45.1	63.0
<b>H&amp;SD</b>	4	238	356.5	1.50	56.9	51.0	72.5
<b>MacLaurin</b>	22	1,172	1,678.2	1.43	60.2	47.9	66.4
<b>McKinnon</b>	3	110	163.0	1.48	66.7	58.3	68.9
<b>Visual Arts</b>	2	34	84.0	2.47	19.4	16.6	21.9
<b>University Totals</b>	<b>140</b>	<b>6,587</b>	<b>9,738.7</b>	<b>1.48</b>	<b>62.7</b>	<b>52.3</b>	<b>72.9</b>

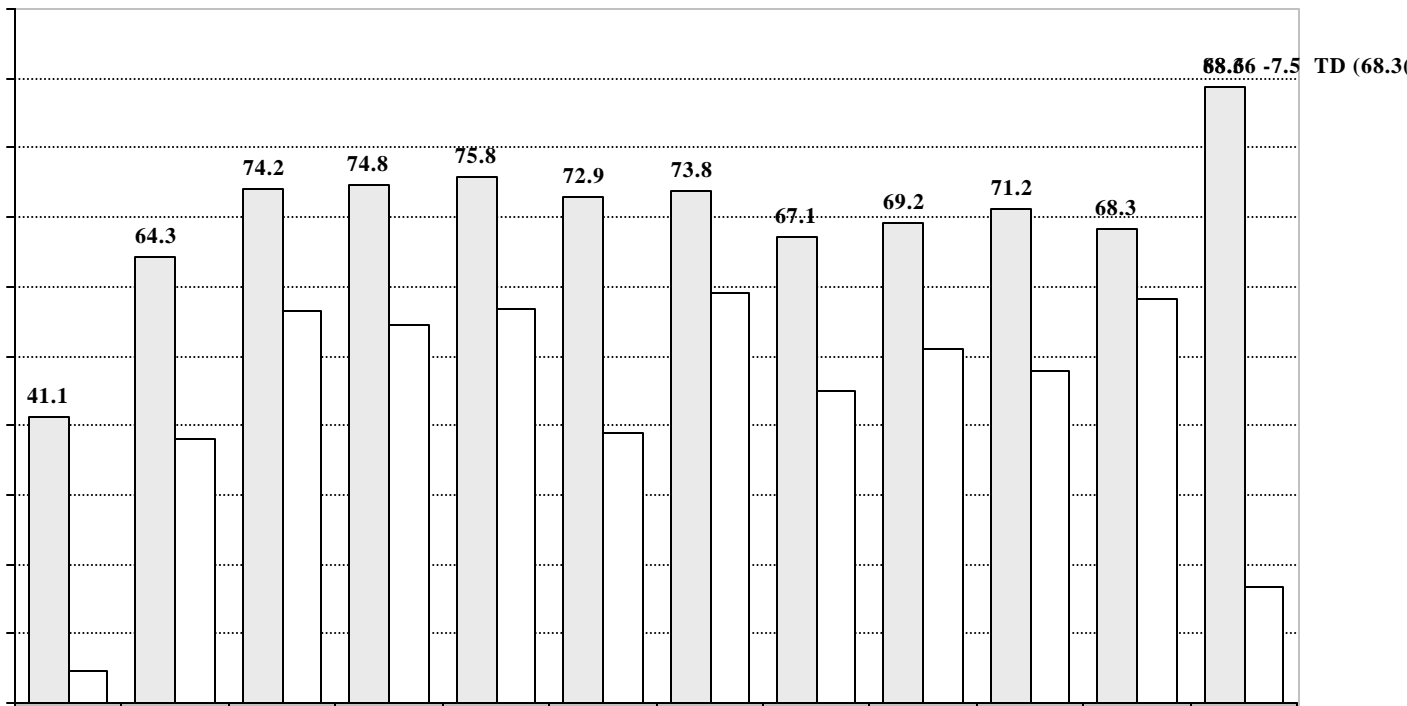
<sup>1</sup>These percentages include both scheduled instruction and bookings.

Source: Scheduling data from October 1997 Student and Bookings Databases.









**TABLE 3****Historical Monday - Friday Percentage Utilization Summary****Room Utilization**

	82/83	83/84	84/85	85/86	86/87	87/90*	90/91	91/92	92/93	93/94	94/95	95/96	96/97	97/98
<b>Day</b>														
Scheduled Instruction	53.8	56.8	59.4	57.4	59.8	-	68.6	70.9	66.9	64.5	63.1	67.4	67.6	62.7
Bookings	4.1	4.1 <sup>1</sup>	2.9	2.7	6.8	-	8.1	12.8	12.0	11.8	11.7	10.6	10.5	10.2
Total	57.8	60.9	62.3	60.2	66.6	-	76.7	83.7	78.9	76.3	74.8	78.0	78.1	72.9
<b>Evening</b>														
Scheduled Instruction	12.1	12.9	14.2	13.0	15.9	-	18.2	18.9	17.4	18.5	18.9	19.0	17.4	15.0
Bookings	5.9	5.9 <sup>1</sup>	4.8	5.1	7.3	-	9.6	12.1	14.8	14.1	14.0	13.5	13.2	11.2
Total	18.0	18.8	18.9	18.1	23.2	-	27.8	31.0	32.2	32.6	32.9	32.5	30.7	26.2

**Seat Utilization****(Scheduled Instruction)**

Day	41.2	45.1	45.3	43.6	45.1	-	51.5	53.2	50.2	47.5	47.6	53.3	55.1	52.3
Eve	6.2	7.6	8.0	7.1	8.9	-	11.0	10.7	9.8	10.9	10.1	11.4	10.6	10.0

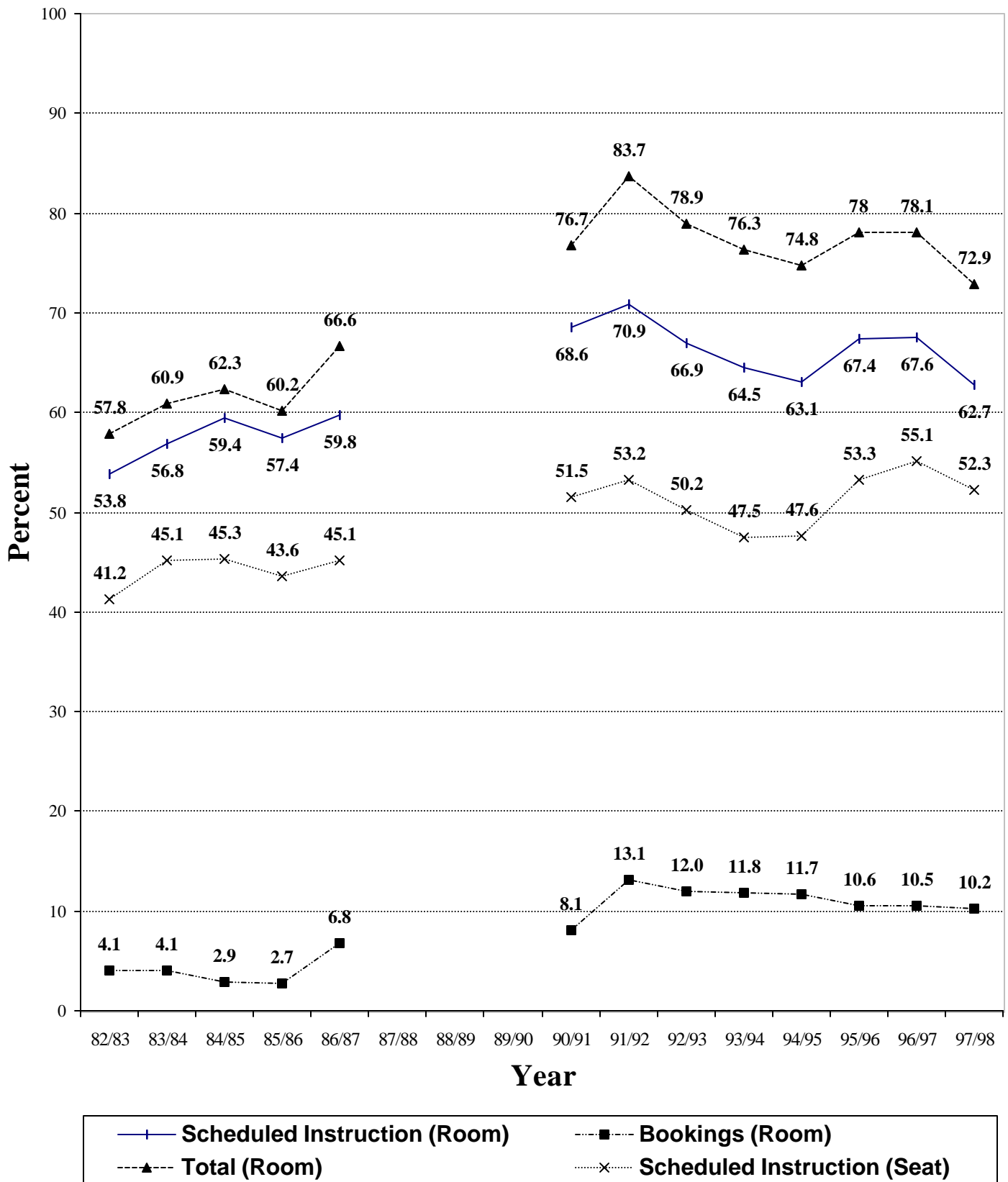
<sup>1</sup>As 1983/84 Bookings Data were unavailable, the 1982/83 levels were assumed.

\*Not Available

Source: Scheduling data from October Student and Bookings Databases.

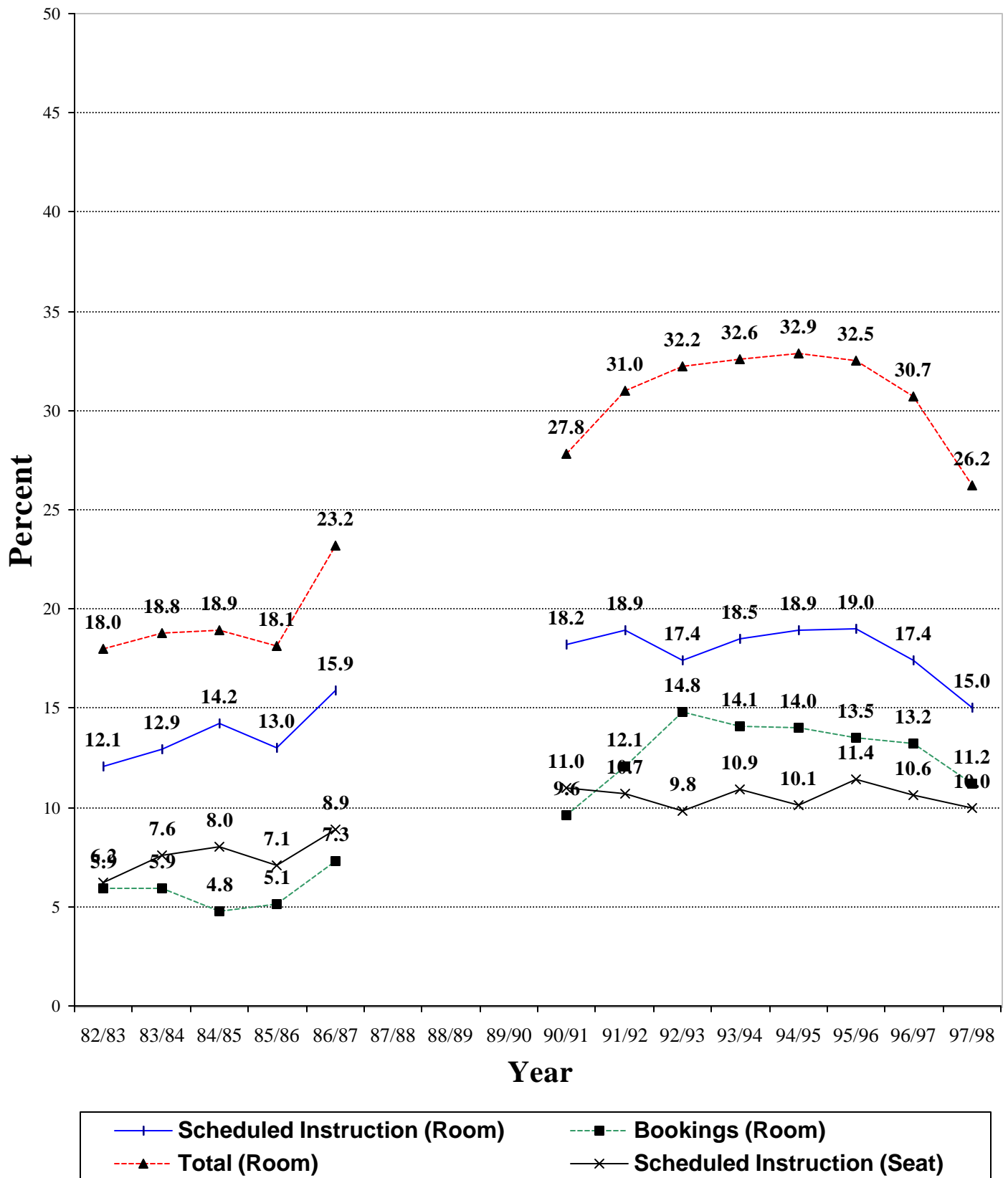
Institutional Analysis  
July 20, 1998

# Chart 16 - Historical Monday to Friday Daytime Utilization Summary



Source: Scheduling data from the University of Victoria's Student and Bookings Databases, October 1997.

# Chart 17 - Historical Monday to Friday Evening Utilization Summary



Source: Scheduling data from the University of Victoria's Student and Bookings Databases, October 1997.

APPENDIX

1997/98 Classroom Inventory

Room Size Interval	Room No.	No. of Seats	Area in Sq. M.	Sq. M. per Seat	Sched Instr % Day Use	Total % Day Use
1 - 25	CRB C109	6	12.6	2.10	57.5	57.5
	CRB C115	6	12.6	2.10	57.5	59.4
	CRB C117	6	12.6	2.10	57.5	57.5
	CRB C119	6	12.6	2.10	57.5	57.5
	CRB C121	6	14.0	2.33	57.5	57.5
	CRB C123	6	14.0	2.33	57.5	57.5
	CLE D250	10	20.7	2.07	35.0	60.9
	CUN 005	10	24.1	2.41	73.8	73.8
	MCK 152	10	25.8	2.58	15.0	20.0
	CLE B346	12	24.3	2.03	45.0	57.8
	CLE C116	12	22.1	1.84	45.0	69.9
	CLE C118	12	22.1	1.84	61.3	73.3
	CLE B446	14	24.3	1.74	60.0	70.0
	CLE D261	14	25.7	1.84	40.0	48.4
	COR A132	14	27.5	1.96	23.8	37.2
	CLE C214	16	26.5	1.66	52.5	61.2
	FIA 108	16	75.4	4.71	0.0	30.0
	VIA A220	16	39.3	2.46	30.0	30.0
	CLE C117	18	34.4	1.91	61.3	78.4
	CLE D123	18	32.4	1.80	0.0	100.0
	CLE D127	18	31.2	1.73	0.0	100.0
	CLE D129	18	31.6	1.76	0.0	100.0
	CLE D133	18	32.2	1.79	0.0	100.0
	COR A372	18	37.7	2.09	30.0	52.9
	COR B115	18	39.2	2.18	0.0	100.0
	MAC D117	18	31.2	1.73	50.0	54.1
	VIA A248	18	44.7	2.48	8.8	13.8
	CLE B215	20	37.6	1.88	46.3	71.4
	CLE B315	20	39.1	1.96	72.5	84.9
	CLE B415	20	37.4	1.87	77.5	85.0
	CLE C316	20	37.5	1.88	65.0	73.3
	COR A339	20	33.5	1.68	46.3	65.2
	CRB C114	20	44.9	2.25	48.8	59.0
	CRB C124	20	44.9	2.25	67.5	74.1
	FIA 209	20	44.0	2.20	47.5	47.7
	ELL 164	22	42.4	1.93	65.0	67.1
	ELL 165	22	43.0	1.95	65.0	69.5
	CLE D124	24	41.1	1.71	85.0	87.7
	CLE D128	24	40.8	1.70	92.5	96.3
	CLE D130	24	34.8	1.45	92.5	92.5
CLE D134	24	40.5	1.69	70.0	79.2	

**APPENDIX (cont'd)**

**1997/98 Classroom Inventory**

<b>Room Size Interval</b>	<b>Room No.</b>	<b>No. of Seats</b>	<b>Area in Sq. M.</b>	<b>Sq. M. per Seat</b>	<b>Sched Instr % Day Use</b>	<b>Total % Day Use</b>
	COR B107	24	33.6	1.40	41.3	49.6
	COR B109	24	33.6	1.40	48.8	54.2
	ELL 161	24	41.9	1.75	82.5	84.9
	HSD A250	24	52.3	2.18	1.3	69.1
	MAC D281	24	54.7	2.28	63.8	67.1
	BGB 204	25	67.8	2.71	27.5	27.5
	BGB 205	25	67.7	2.71	36.3	36.3
	MAC B120	25	45.6	1.82	30.0	30.0
	49	849	1709.5	2.01	45.9	64.3
26 - 39	FIA 104	26	59.5	2.29	75.0	80.4
	CLE C111	28	35.7	1.28	67.5	72.4
	CLE C113	28	38.4	1.37	71.3	83.0
	CLE C115	28	54.8	1.96	82.5	88.5
	BEC 363	30	68.2	2.27	11.3	36.5
	CLE B020	30	43.8	1.46	7.5	100.0
	HSD A260	30	61.7	2.06	51.3	62.8
	HSD A264	30	60.4	2.01	57.5	63.5
	MAC A166	30	66.7	2.22	66.3	70.6
	MAC A541	30	52.1	1.74	45.0	45.0
	MAC D105	30	42.5	1.42	56.3	58.0
	CLE A304	32	48.1	1.50	71.3	75.3
	CLE C108	32	57.1	1.78	77.5	85.7
	COR A128	32	41.4	1.29	77.5	79.7
	CLE A118	34	55.7	1.64		



**APPENDIX (cont'd)**

**1997/98 Classroom Inventory**

<b>Room Size Interval</b>	<b>Room No.</b>		<b>No. of Seats</b>	<b>Area in Sq. M.</b>	<b>Sq. M. per Seat</b>	<b>Sched Instr % Day Use</b>	<b>Total % Day Use</b>
40 - 49	CLE	A211	40	51.6	1.29	87.5	88.1
	MAC	D287	40	91.0	2.28	65.0	67.3
	CLE	C110	42	57.8	1.38	80.0	83.7
	CLE	D125	42	50.2	1.20	87.5	88.0
	CLE	D131	42	50.2	1.20	90.0	90.0
	CLE	D267	42	51.7	1.23	85.0	86.2
	MAC	D283	44	57.8	1.31	45.0	53.5
	CRB	C108	45	70.5	1.57	65.0	66.2
	MAC	A168	45	75.9	1.69	61.3	80.0
	MAC	A169	45	82.0	1.82	52.5	60.0
	MAC	D101	45	84.4	1.88	60.0	73.3
	MAC	D103	45	84.4	1.88	71.3	78.7
	MAC	MAC			73.3		

**APPENDIX (cont'd)**

**1997/98 Classroom Inventory**

<b>Room Size Interval</b>	<b>Room No.</b>		<b>No. of Seats</b>	<b>Area in Sq. M.</b>	<b>Sq. M. per Seat</b>	<b>Sched Instr % Day Use</b>	<b>Total % Day Use</b>
70 - 89	CLE	A207	70	129.7	1.85	65.0	73.7
	COR	A125	70	82.9	1.18	72.5	76.0
	COR	A225	70	82.9	1.18	75.0	77.1
	CRB	C122	72	128.8	1.79	70.0	73.1
	CRB	C116	73	128.7	1.76	90.0	92.6
	CLE	A307	74	88.0	1.19	75.0	78.1
	CLE	A311	74	89.8	1.21	67.5	71.2
	CRB	C118	75	88.0	1.17	87.5	89.7
	CLE	C112	77	115.7	1.50	87.5	93.2
	ELL	062	80	91.9	1.15	77.5	80.4
	10		735	1026.4	1.40	76.8	80.5
90 - 179	COR	A120	96	103.0	1.07	87.5	87.8
	COR	A221	108	109.1	1.01	90.0	92.2
	COR	B108	108	133.4	1.24	87.5	87.9
	COR	B112	108	132.8	1.23	82.5	85.8
	COR	B143	108	117.1	1.08	80.0	83.1
	MAC	D288	110	147.4	1.34	77.5	83.1
	ELL	167	148	198.1	1.34	90.0	91.3
	HSD	A240	154	182.1	1.18	92.5	94.5
	8		940	1123.0	1.19	85.9	88.2
180 - 325	ELL	168	180	237.1	1.32	82.5	83.1
	CRB	C103	200	202.6	1.01	95.0	96.9
	MAC	A144	323	334.5	1.04	81.3	87.6
	BGB	159	325	344.0	1.06	68.8	75.4
	4		1028	1118.2	1.09	81.9	85.8
University Totals	140		6587	9738.7	1.48	62.7	72.9

Institutional Analysis  
July 20, 1998