

*University Of Victoria
Classroom Utilization
1996/97*

*Prepared by: Gordon M. Elliott
Alan R. Wilson*

Our Web Home Page is <http://www.inst.uvic.ca>

*Institutional Analysis
August 15, 1997*

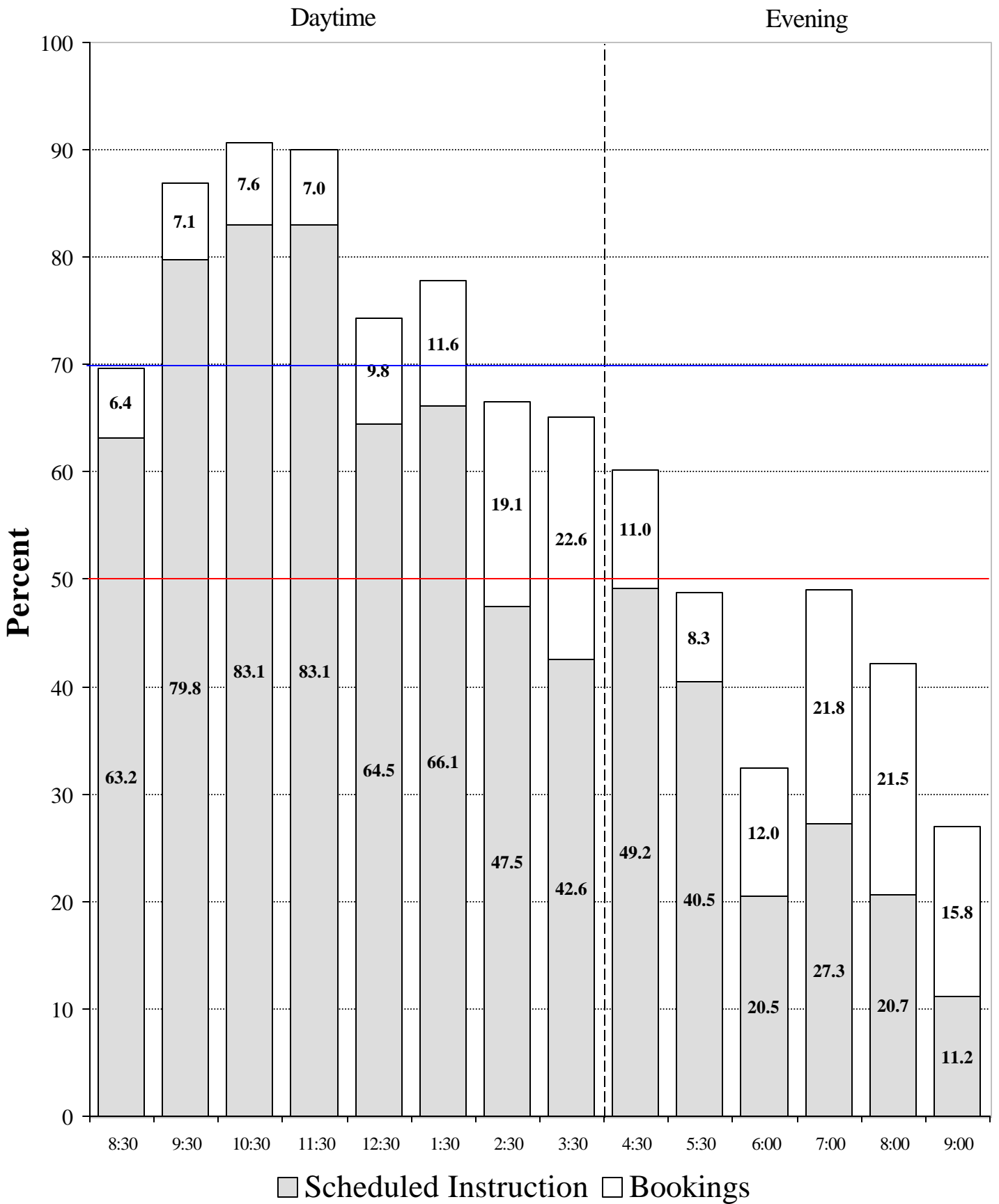
Classroom Utilization

1996/97

Table of Contents

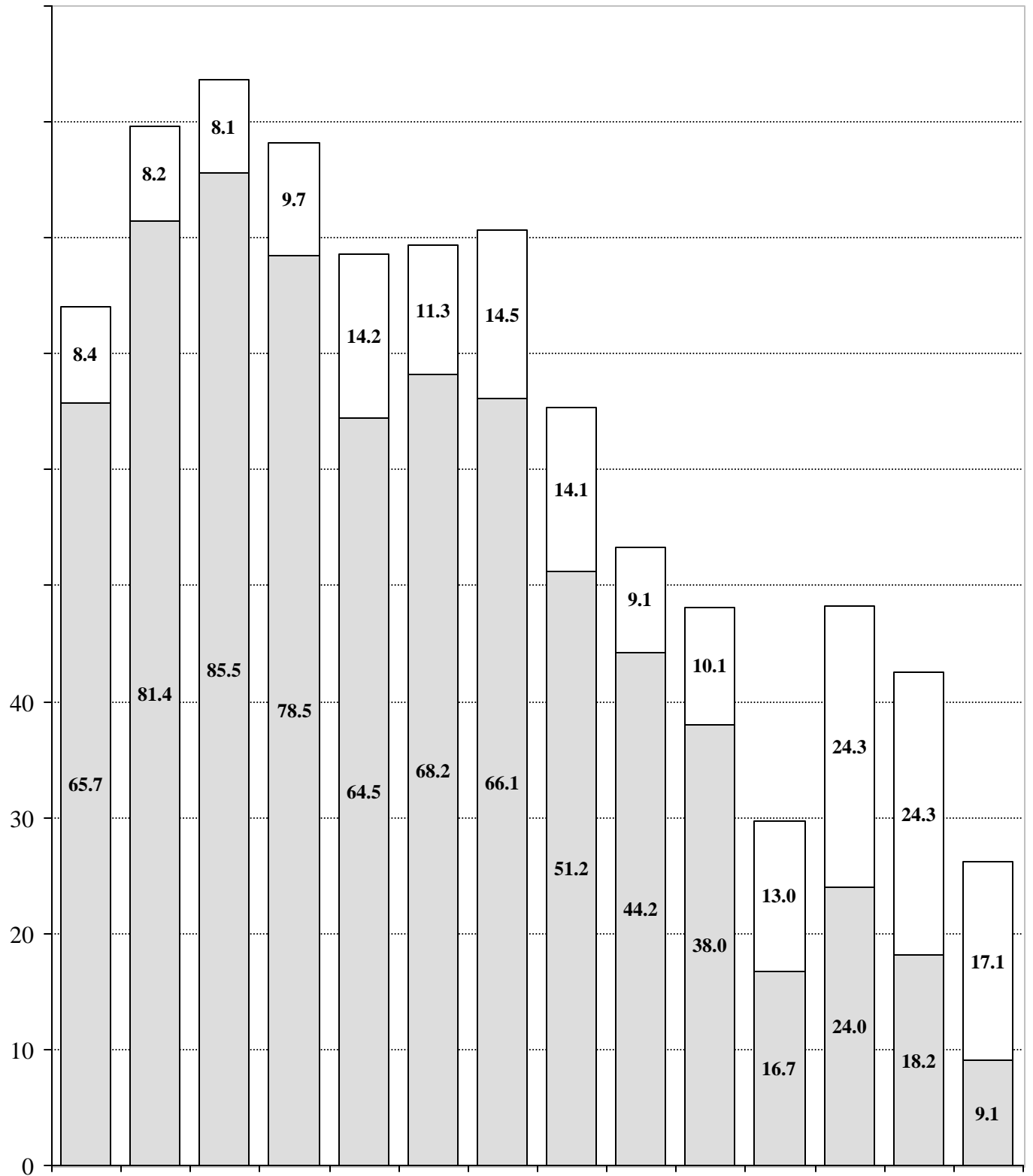
		Introduction
Chart 1	—	Monday Room Utilization by Starting Time
Chart 2	—	Tuesday Room Utilization by Starting Time
Chart 3	—	Wednesday Room Utilization by Starting Time
Chart 4	—	Thursday Room Utilization by Starting Time
Chart 5	—	Friday Room Utilization by Starting Time
Chart 6	—	Saturday Room Utilization by Starting Time
Chart 7	—	Average Monday to Friday Room Utilization by Starting Time
Chart 8	—	Monday to Friday Daytime Seat Utilization for Scheduled Instruction by Starting Time
Chart 9	—	Average Monday to Friday Seat Utilization for Scheduled Instruction by Starting Time
Chart 10	—	Monday to Friday Daytime Seat Utilization of Occupied Rooms for Scheduled Instruction by Starting Time
Chart 11	—	Average Monday to Friday Seat Utilization of Occupied Rooms for Scheduled Instruction by Starting Time
Table 1	—	Classroom Inventory
Chart 12	—	Average Monday to Friday Room Utilization by Seating Capacity
Table 2	—	Building Inventory
Chart 13	—	Average Monday to Friday Room Utilization by Building
Chart 14	—	Average Monday to Friday Seat Utilization for Scheduled Instruction by Room Capacity
Chart 15	—	Average Monday to Friday Seat Utilization for Scheduled Instruction by Building
Table 3	—	Historical Monday to Friday Percentage Utilization Summary
Chart 16	—	Historical Monday to Friday Daytime Utilization Summary
Chart 17	—	Historical Monday to Friday Evening Utilization Summary
APPENDIX	—	1996/97 Classroom Inventory

Chart 2: Tuesday Room Utilization By Start Time



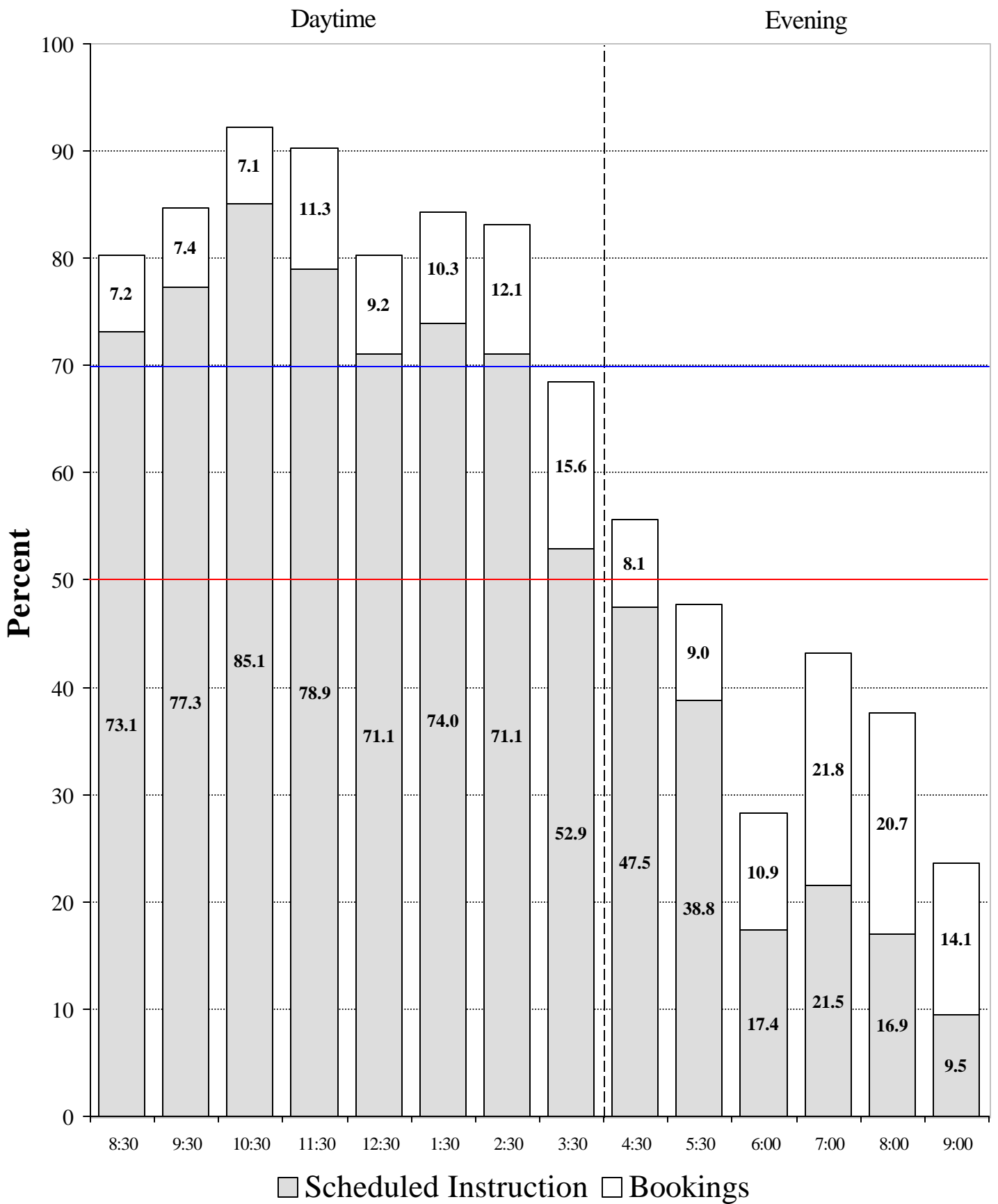
Source: Scheduling data from the University of Victoria's Student and Bookings Databases, October 1996.

Chart 3: Wednesday Room Utilization By Start Time



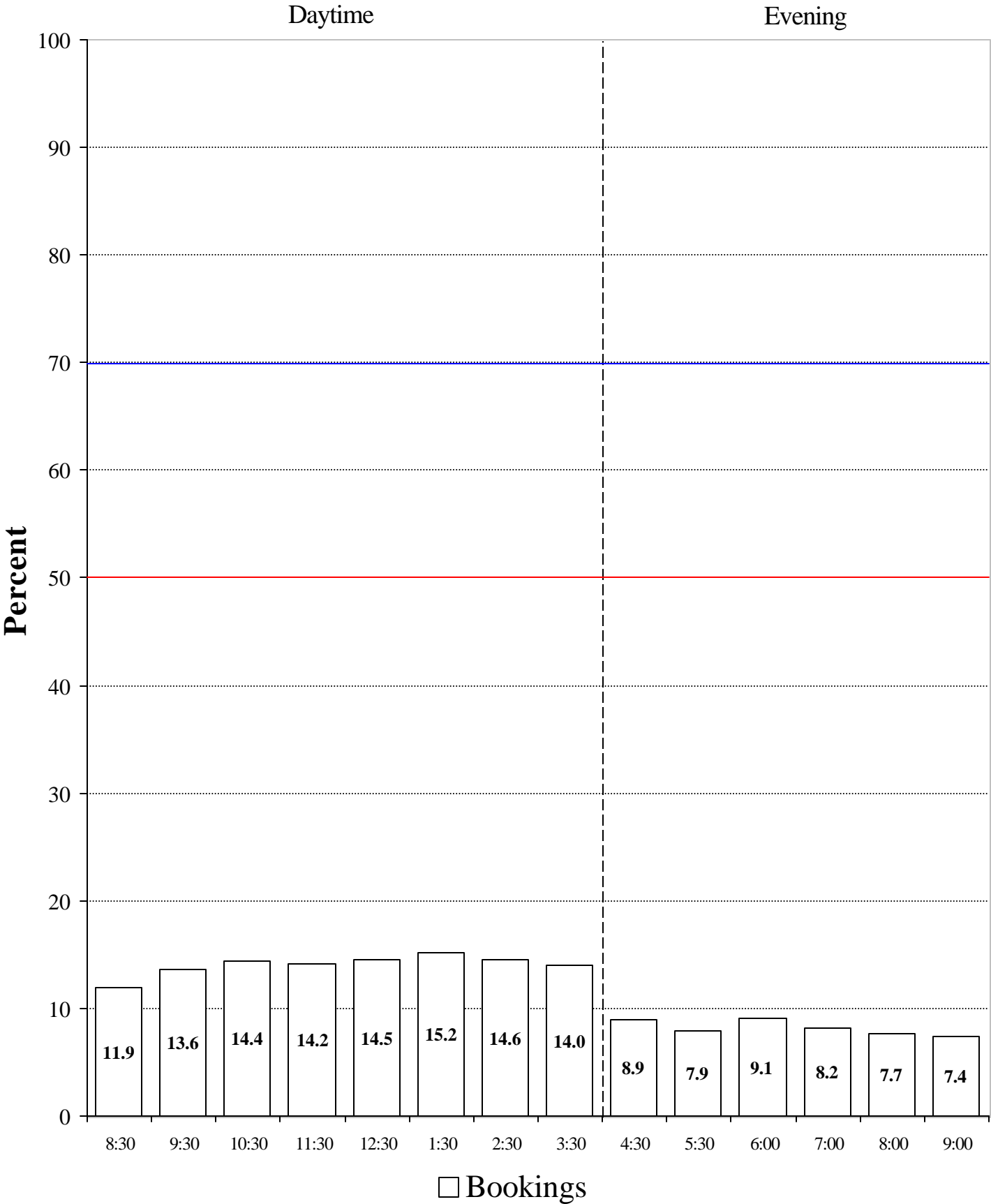
Source: Scheduling data from the University of Victoria's Student and Bookings Databases, October 1996.

Chart 4: Thursday Room Utilization By Start Time



Source: Scheduling data from the University of Victoria's Student and Bookings Databases, October 1996.

Chart 6: Saturday Room Utilization By Start Time



Source: Scheduling data from the University of Victoria's Student and Bookings Databases, October 1996.

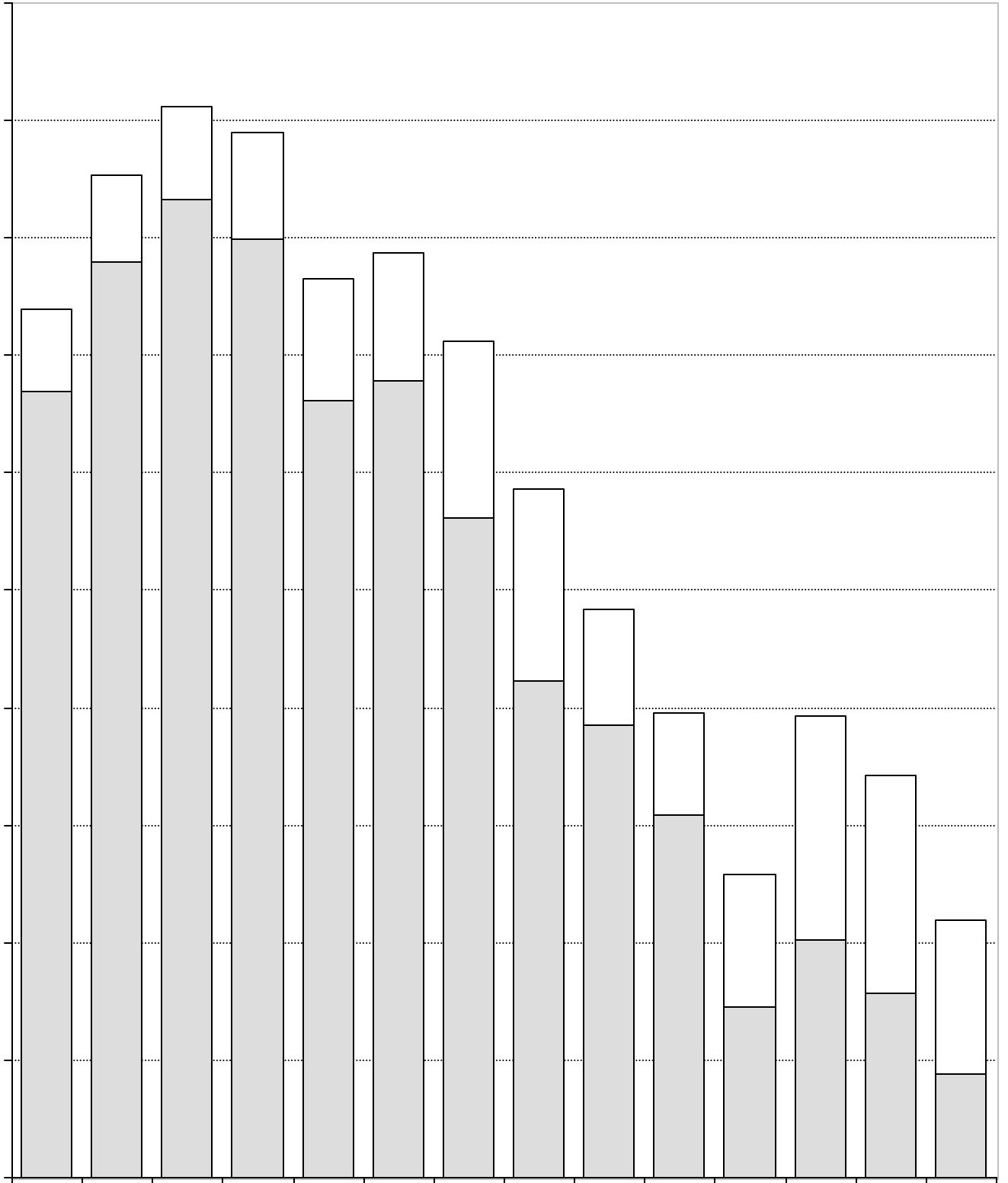


Chart 8: Monday - Friday Seat Utilization for Scheduled Instruction By Start Time

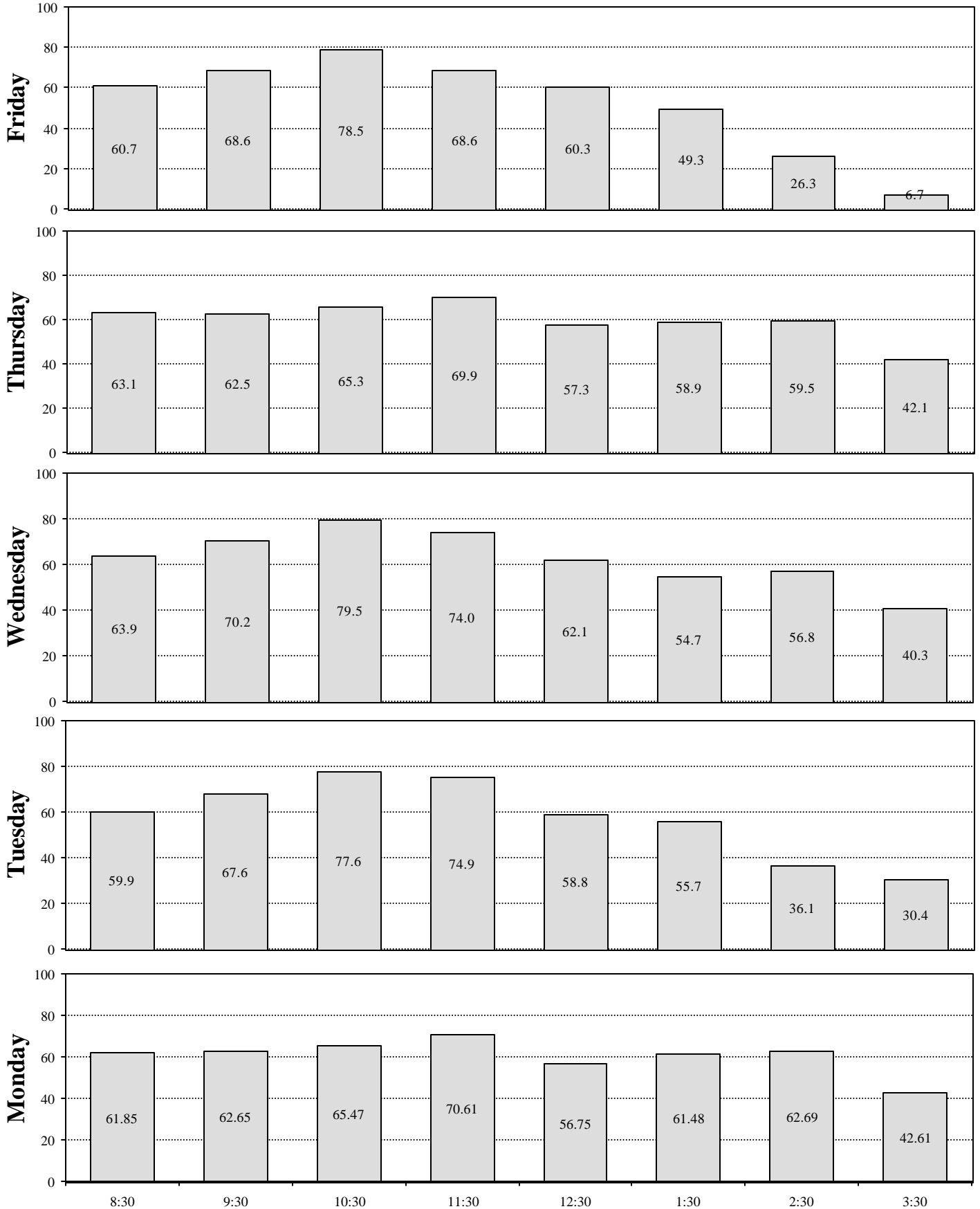


Chart 9: Average Monday to Friday Seat Utilization For Scheduled Instruction By Start Time

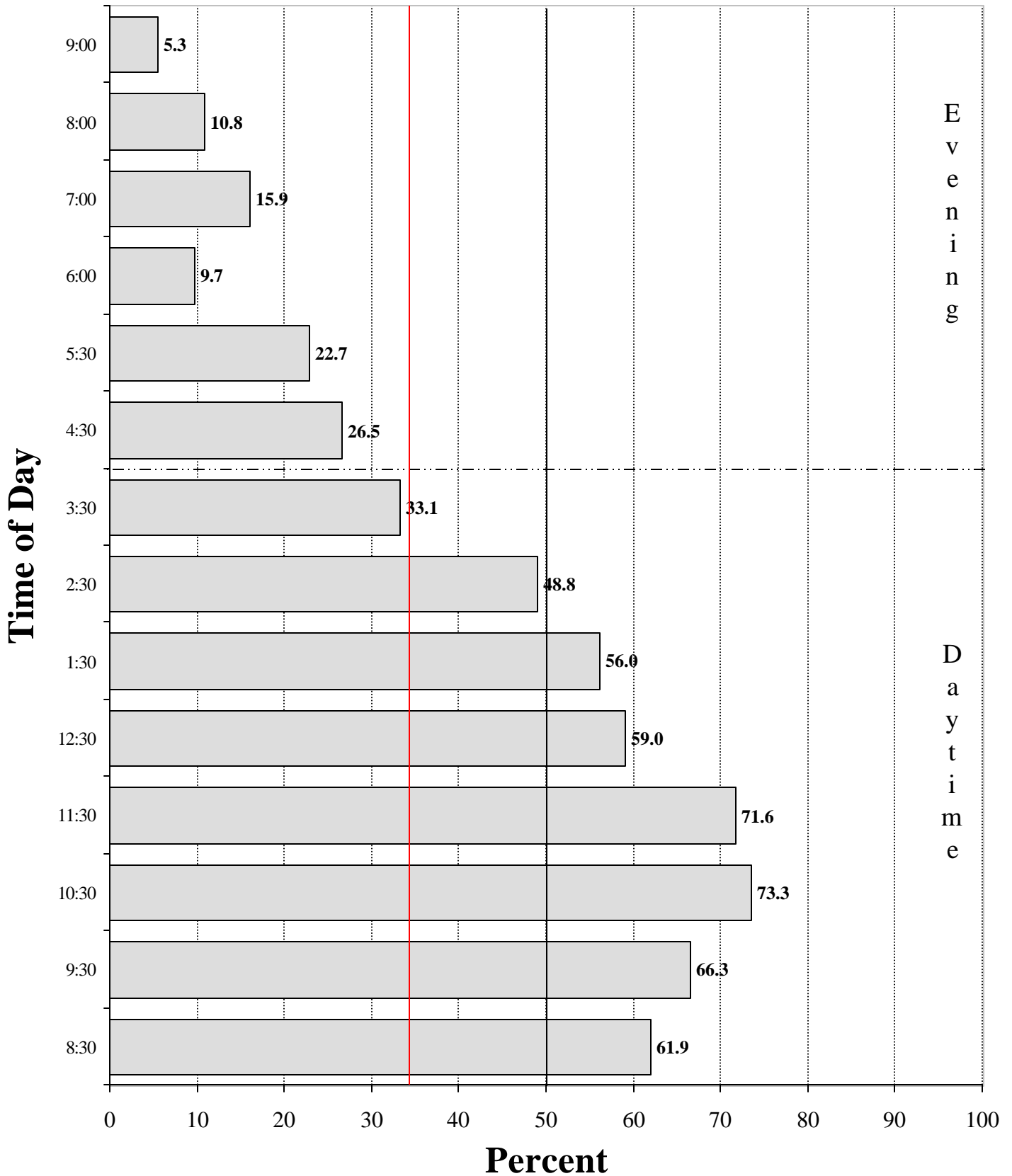


Chart 10: Monday - Friday Seat Utilization of Occupied

Note: Percentages are based on the total number of seats in occupied rooms only.

Source: Scheduling data from the University of Victoria's Student and Bookings Databases, October 1996.

Institutional Analysis

August 15, 1997

TABLE 1

1996/97 Classroom Inventory

Seating Capacity	No. of Rooms	No. of Seats	Area in Sq. M.	Sq. M. per Seat	Monday - Friday Daytime		
					%Sched Inst Room Use	%Seat Use	%Total¹ Room Use
10-25	43	807	1,603.4	1.99	48.3	34.3	69.6
26-39							

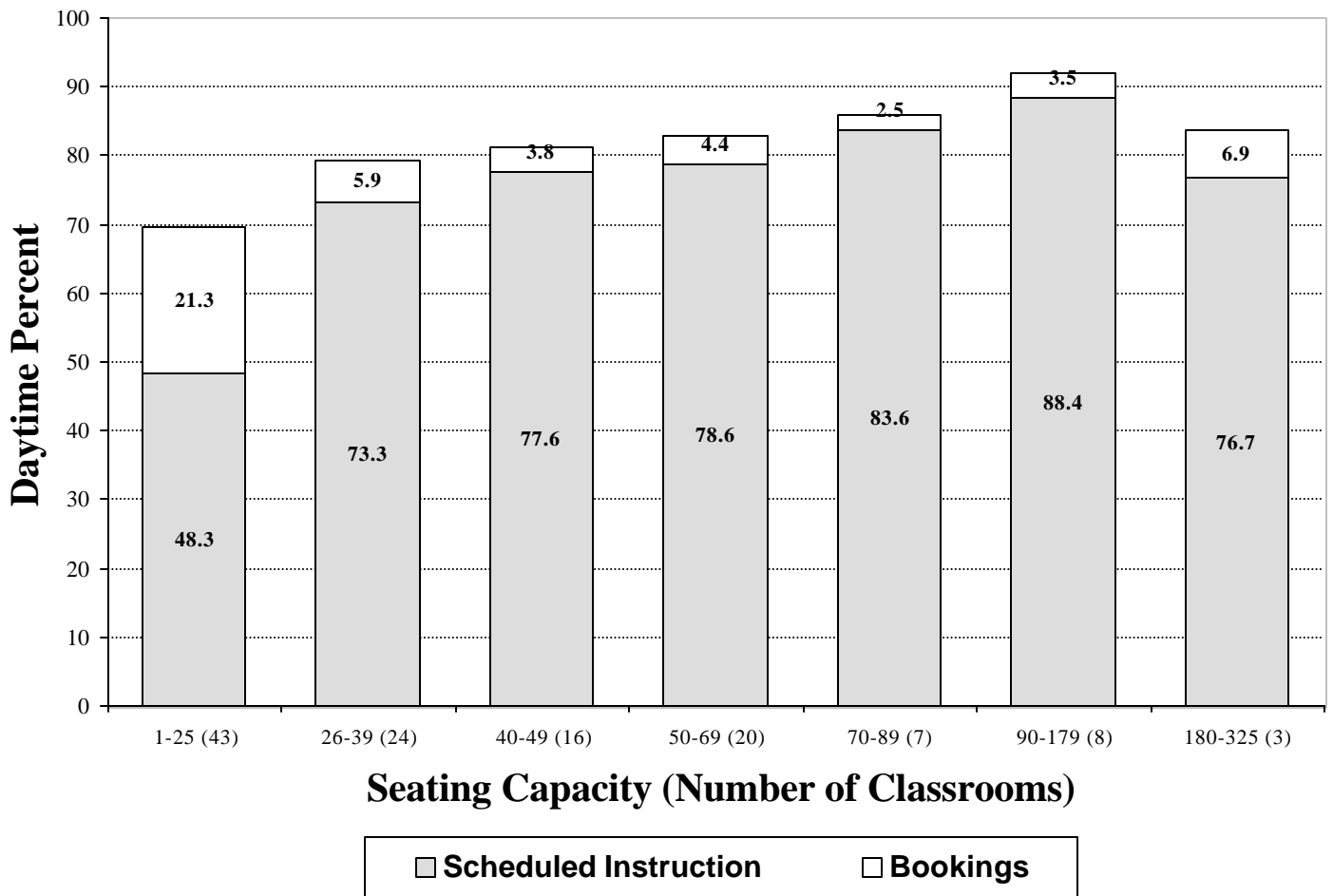


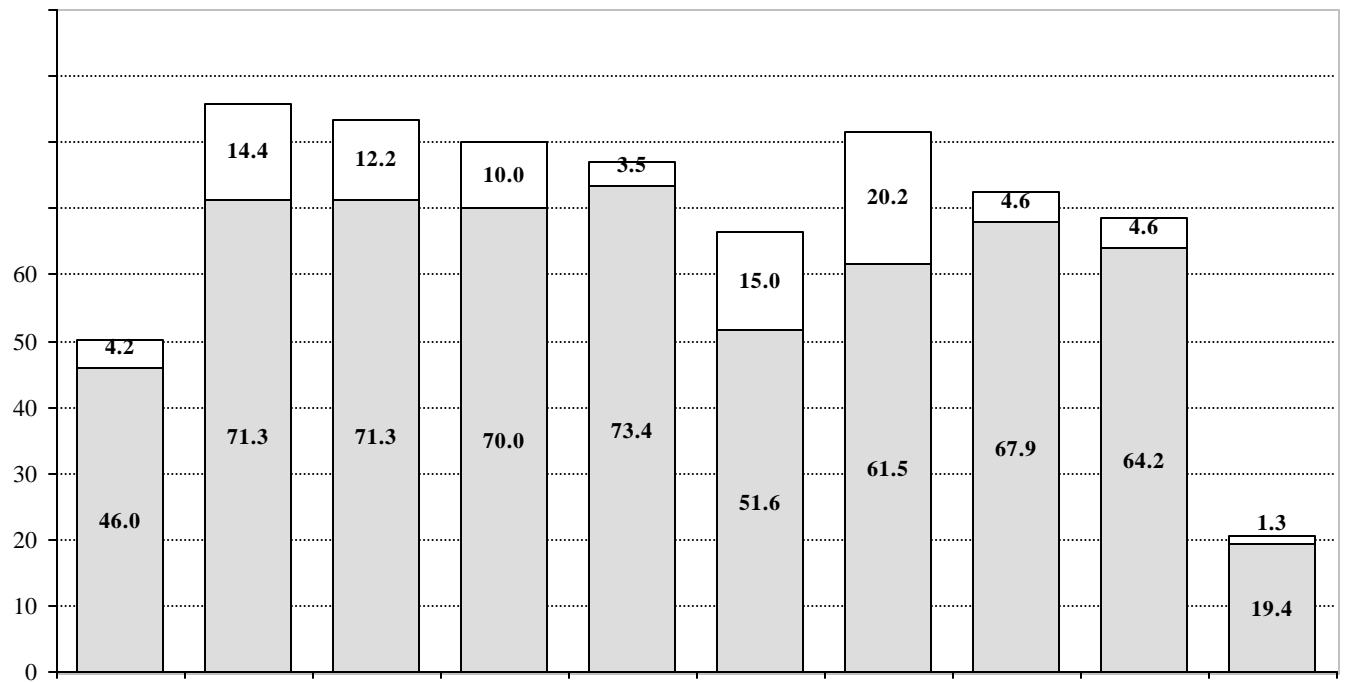
TABLE 2
1996/97 Building Inventory

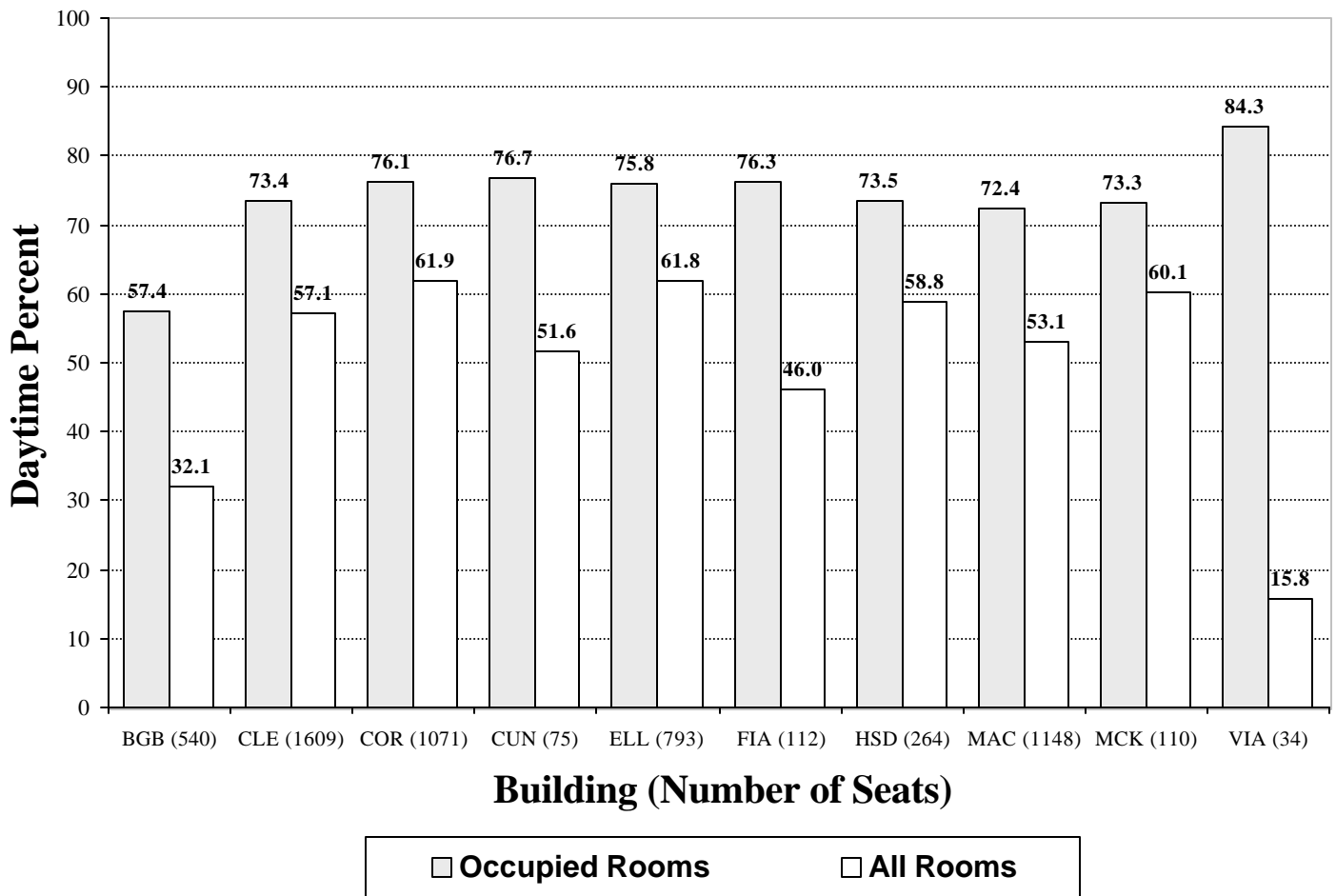
Building	No. of Rooms	No. of Seats	Area in Sq. M.	Sq. M. per Seat	Monday - Friday Daytime %		
					%Sched Inst Room Use	%Seat Use	%Total¹ Room Use
Begbie	6	540	919.1	1.70	46.0	32.1	50.2
Clearihue	47	1,609	2,388.9	1.48	71.3	57.1	85.7
Cornett	19	1,071	1,382.4	1.29	71.3	61.9	83.5
Cunningham	2	75	100.7	1.34	70.0	51.6	70.0
Elliott	12	793	1,069.7	1.35	73.4	61.8	77.0
Fine Arts	4	112	255.5	2.28	51.6	46.0	66.6
H&SD	5	264	407.8	1.54	61.5	58.8	81.7
MacLaurin	21	1,148	1,623.5	1.41	67.9	53.1	72.6
McKinnon	3	110	163.0	1.48	64.2	60.1	68.7
Visual Arts	2	34	84.0	2.47	19.4	15.8	20.6
University Totals	121	5,756	8,394.6	1.46	67.6	55.1	78.1

¹These percentages include both scheduled instruction and bookings.

Source: Scheduling data from October 1996 Student and Bookings Databases.

Institutional Analysis
August 15, 1997





Source: Scheduling data from the University of Victoria's Student and Bookings Databases, October 1996.

TABLE 3**Historical Monday - Friday Percentage Utilization Summary****Room Utilization**

	82/83	83/84	84/85	85/86	86/87	87/90*	90/91	91/92	92/93	93/94	94/95	95/96	96/97
Day													
Scheduled Instruction	53.8	56.8	59.4	57.4	59.8	-	68.6	70.9	66.9	64.5	63.1	67.4	67.6
Bookings	4.1	4.1 ¹	2.9	2.7	6.8	-	8.1	12.8	12.0	11.8	11.7	10.6	10.5
Total	57.8	60.9	62.3	60.2	66.6	-	76.7	83.7	78.9	76.3	74.8	78.0	78.1
Evening													
Scheduled Instruction	12.1	12.9	14.2	13.0	15.9	-	18.2	18.9	17.4	18.5	18.9	19.0	17.4
Bookings	5.9	5.9 ¹	4.8	5.1	7.3	-	9.6	12.1	14.8	14.1	14.0	13.5	13.2
Total	18.0	18.8	18.9	18.1	23.2	-	27.8	31.0	32.2	32.6	32.9	32.5	30.7
<u>Seat Utilization</u>													
<u>(Scheduled Instruction)</u>													
Day	41.2	45.1	45.3	43.6	45.1	-	51.5	53.2	50.2	47.5	47.6	53.3	55.1
Eve	6.2	7.6	8.0	7.1	8.9	-	11.0	10.7	9.8	10.9	10.1	11.4	10.6

¹As 1983/84 Bookings Data were unavailable, the 1982/83 levels were assumed.

*Not Available

Source: Scheduling data from October Student and Bookings Databases.

Institutional Analysis
August 15, 1997

APPENDIX

1996/97 Classroom Inventory

Room Size Interval	Room No.	No. of Seats	Area in Seats	Sq. M. per	Sched Instr	Total
-------------------------------	---------------------	-------------------------	--------------------------	-------------------	--------------------	--------------

APPENDIX

1996/97 Classroom Inventory

Room Size Interval	Room No.	No. of Seats	Area in Seats	Sq. M. per	Sched Instr	Total
-------------------------------	---------------------	-------------------------	--------------------------	-------------------	--------------------	--------------

APPENDIX

1996/97 Classroom Inventory

Room Size Interval	Room No.	No. of Seats	Area in SeatsIntmq	Sq. M. per W07501tmq W n 75(InTD/F)	Sched Instr	Total
-----------------------	-------------	-----------------	-----------------------	--	-------------	-------

APPENDIX

1996/97 Classroom Inventory

Room Size Interval	Room No.	No. of Seats	Area in Seats	Sq. M. per	Sched Instr	Total
-------------------------------	---------------------	-------------------------	--------------------------	-------------------	--------------------	--------------