

University of Victoria

Classroom Utilization Report
2005/06

Prepared by: Jim Martell
Alan Wilson

Office of Institutional Planning and Analysis
February, 2006

<http://www.inst.uvic.ca>

Classroom Utilization

2005-2006

Table of Contents

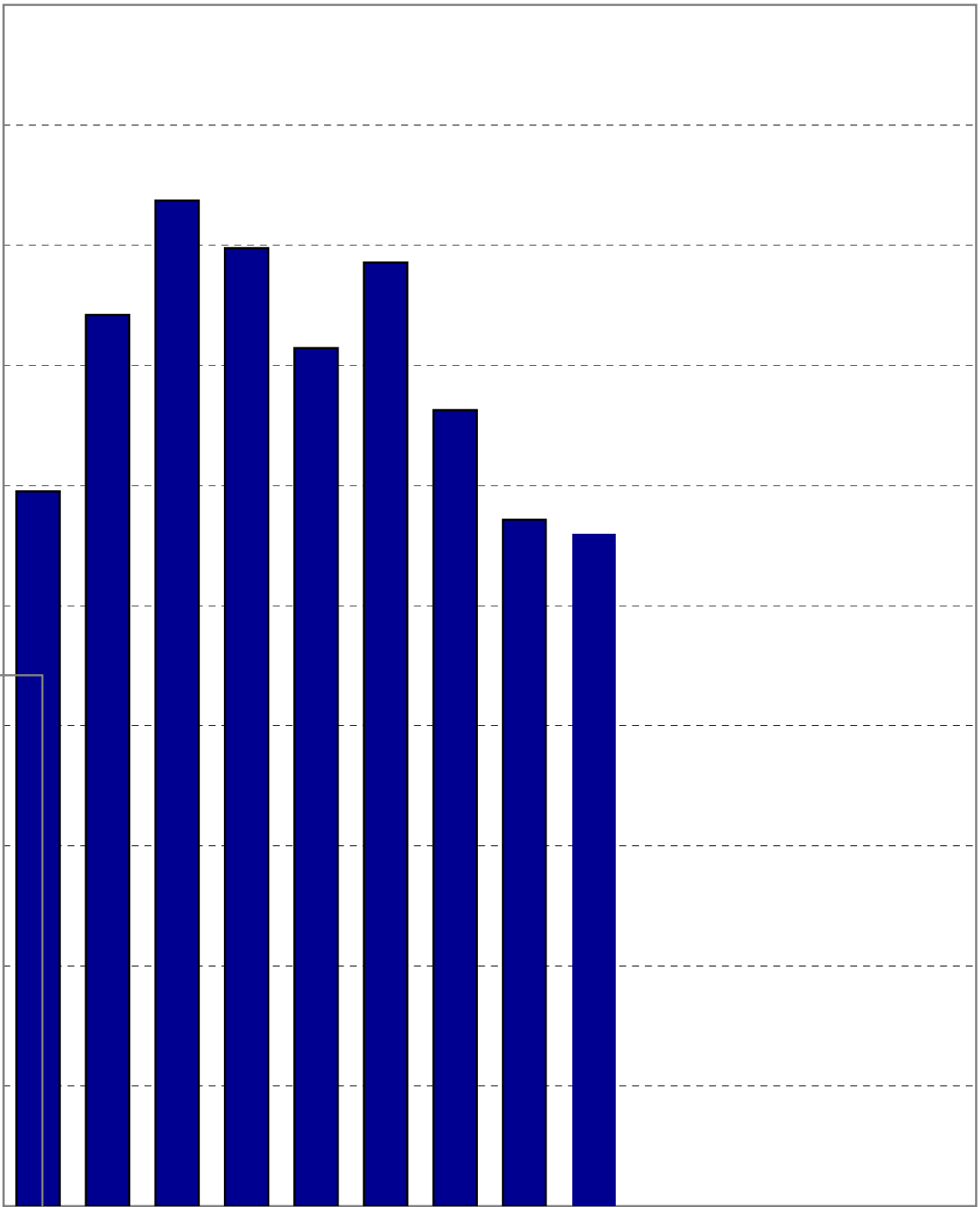
Introduction

Chart 1 — Monday Room Utilization by Starting Time

Chart 2 — Tuesday Room Utilization by Starting Time

Chart 3 — Wednesday Room Utilization by Starting Time

Chart 4



Source: Scheduling data from October 2005 Student and Bookings Databases

Chart 2 University of Victoria Tuesday Room Utilization by Starting Time

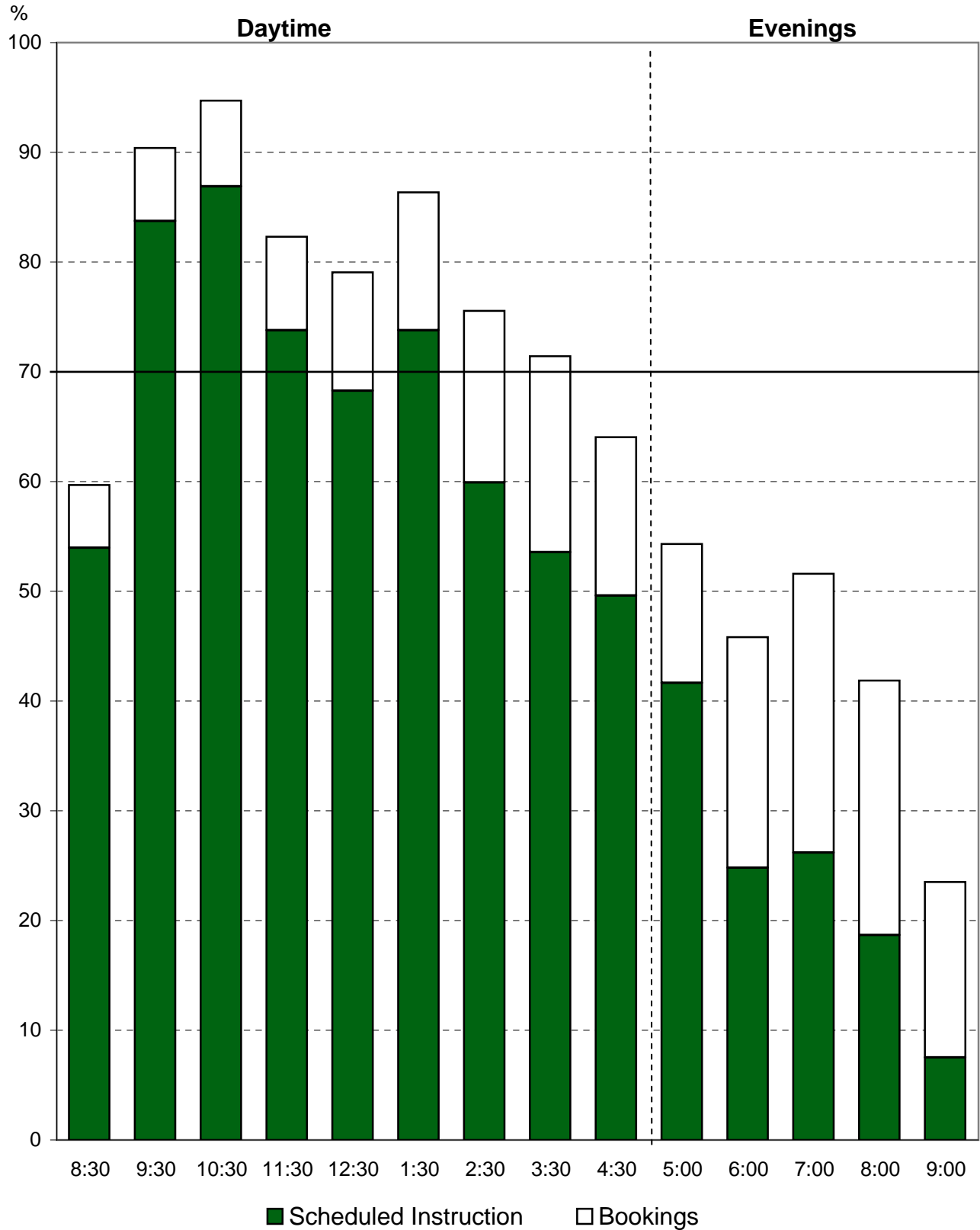


Chart 3

University of Victoria

Wednesday Room Utilization by Starting Time

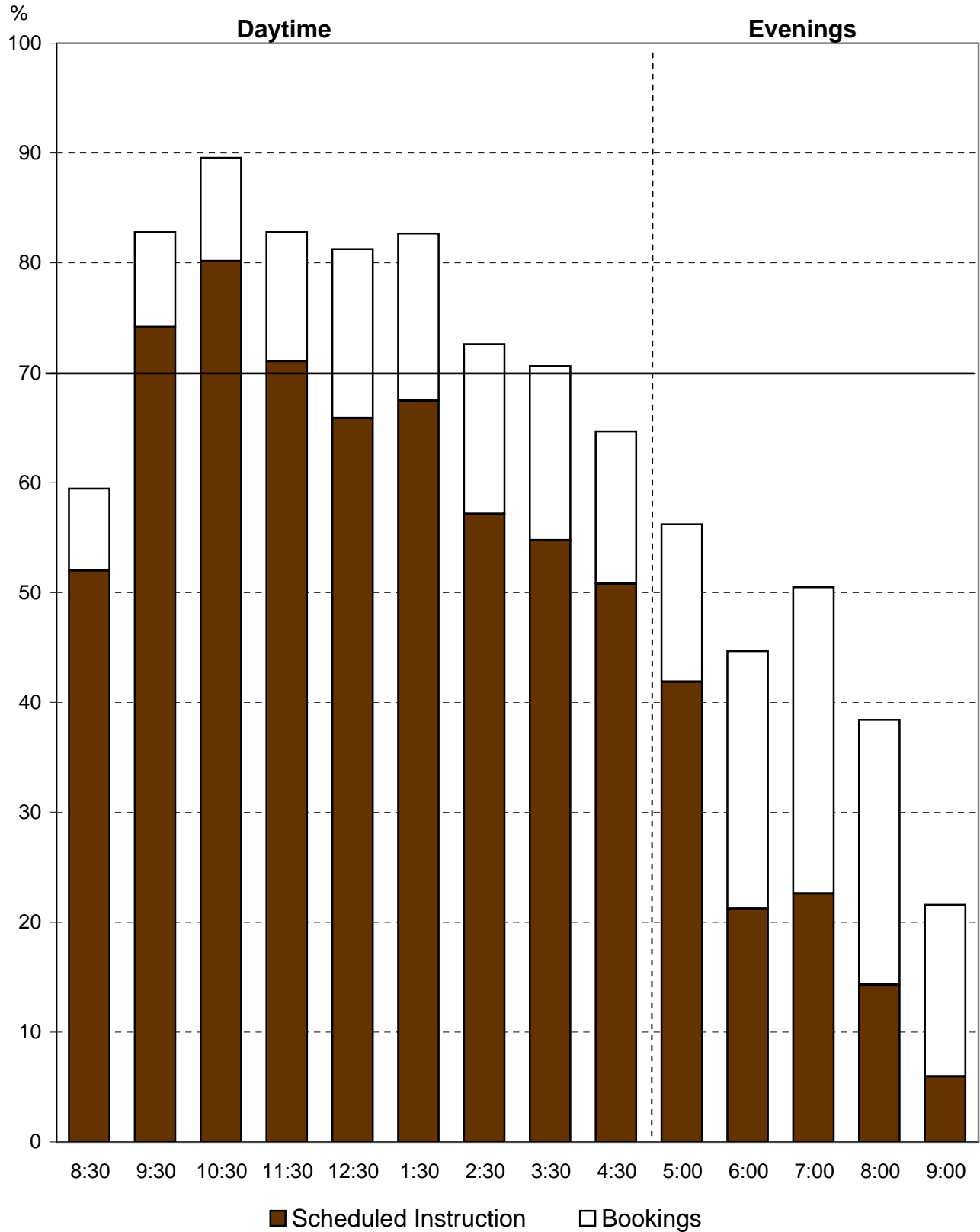


Table with 10 empty rows, indicated by dashed lines.

Chart 5

University of Victoria

Friday Room Utilization by Starting Time

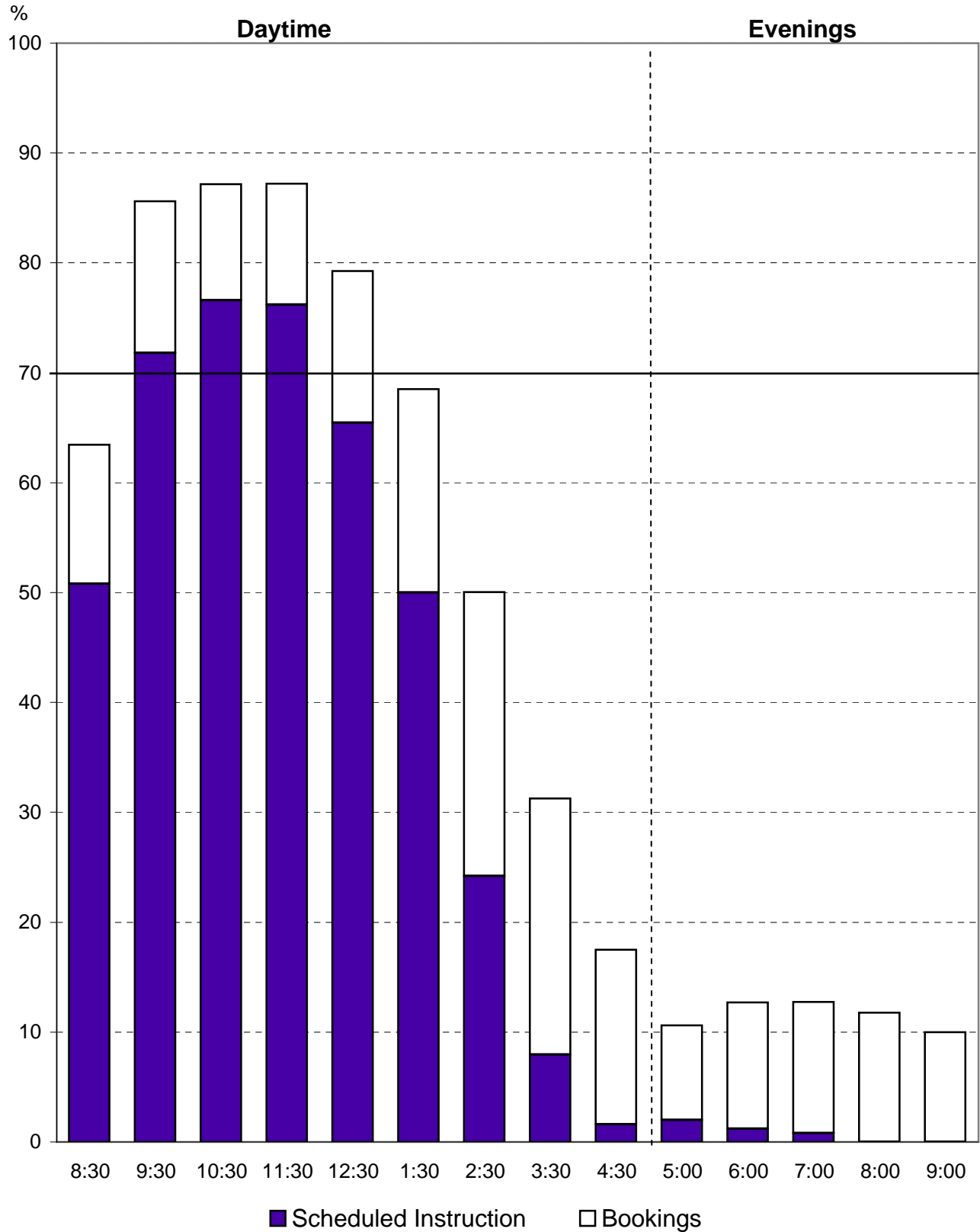


Chart 6

University of Victoria

Saturday Room Utilization by Starting Time

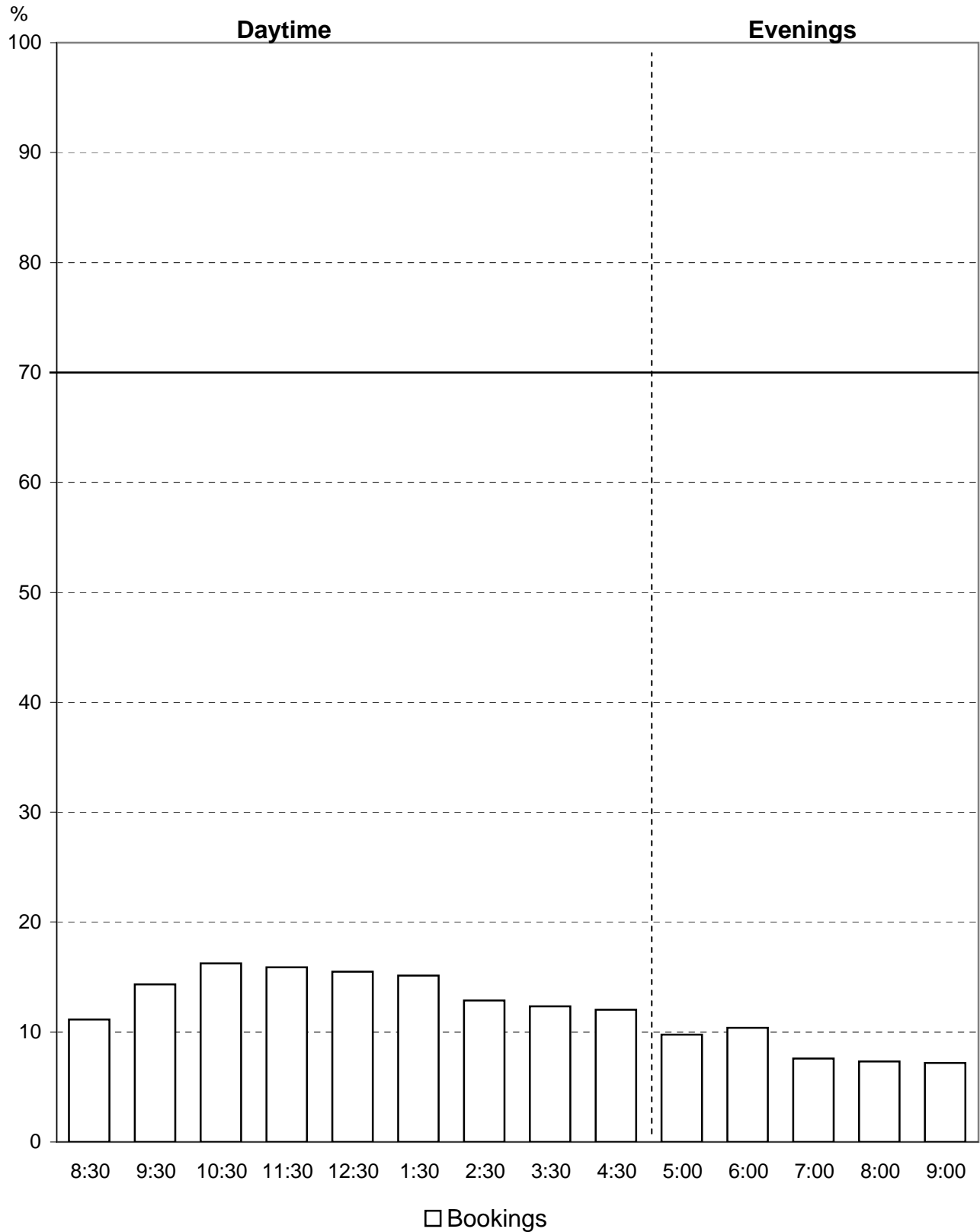


Chart 7
University of Victoria
Average Monday to Friday Room Utilization
by Starting Time

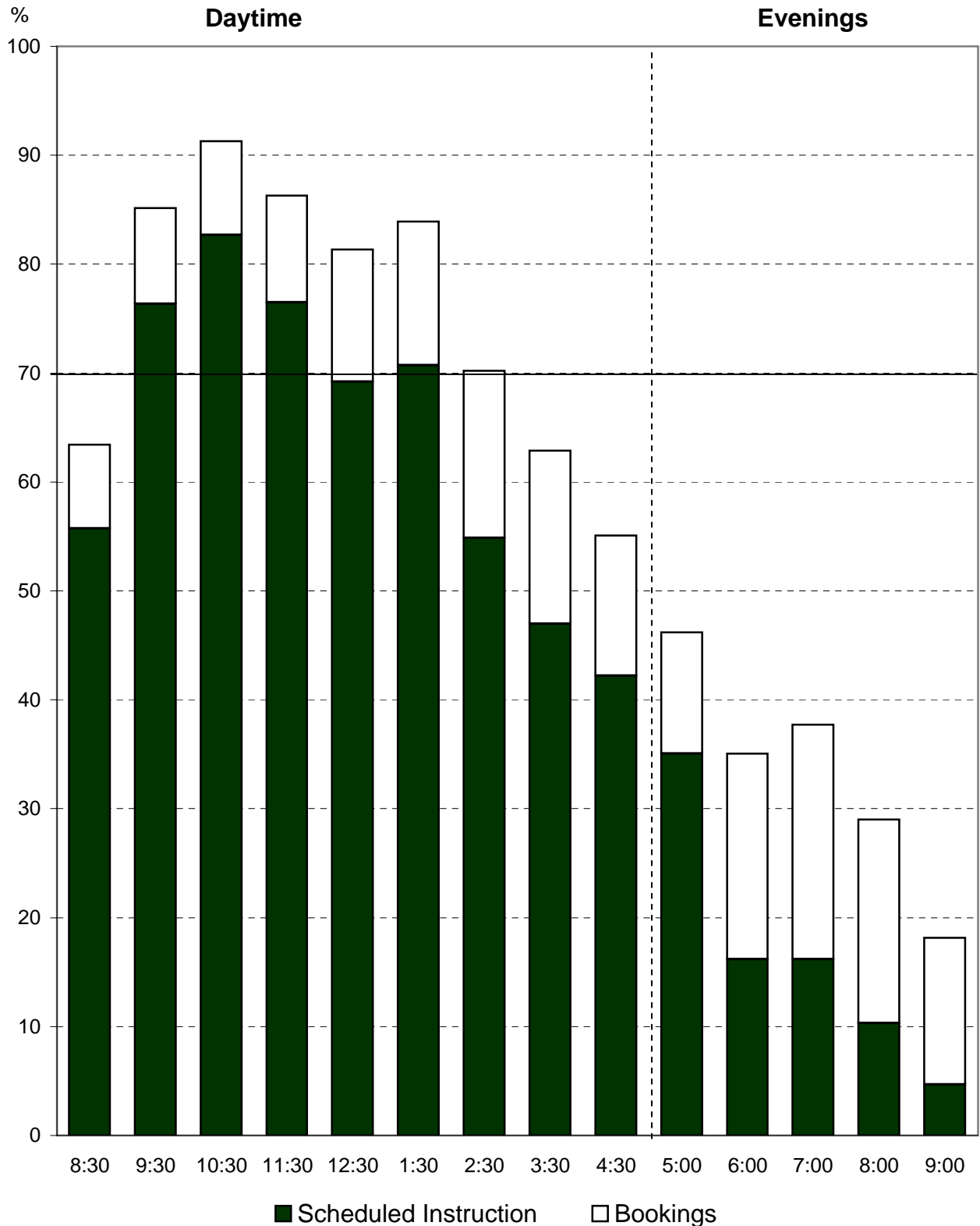


Chart 8
University of Victoria
Monday to Friday Seat Utilization
for Scheduled Instruction by Starting Time

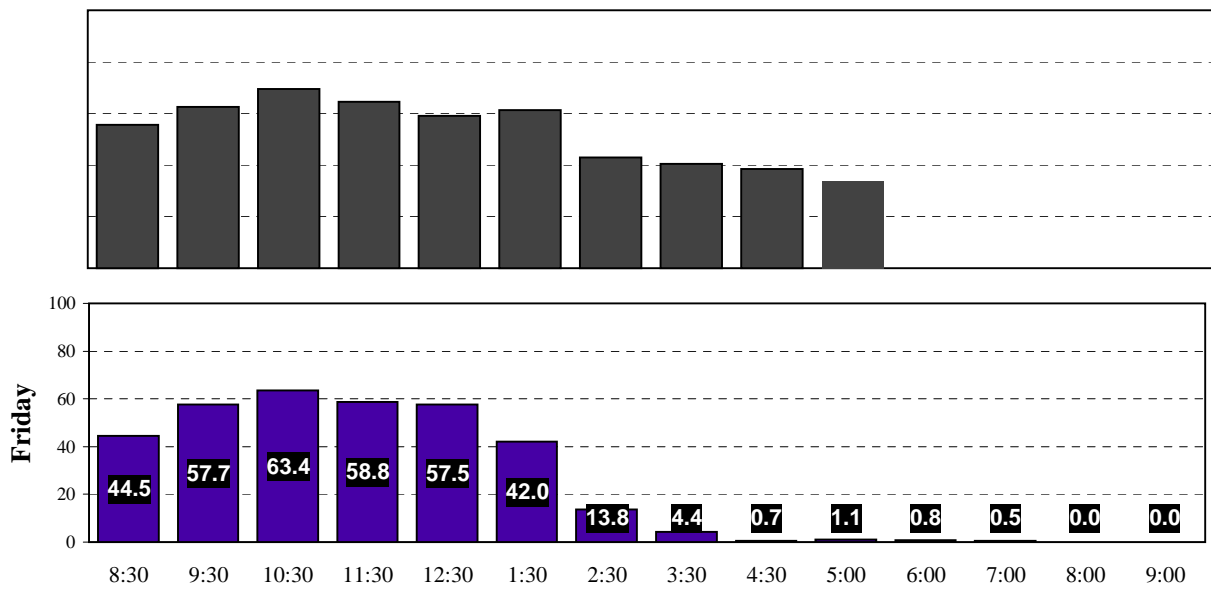


Chart 9
University of Victoria
Average Monday to Friday Seat Utilization
for Scheduled Instruction By Starting Time

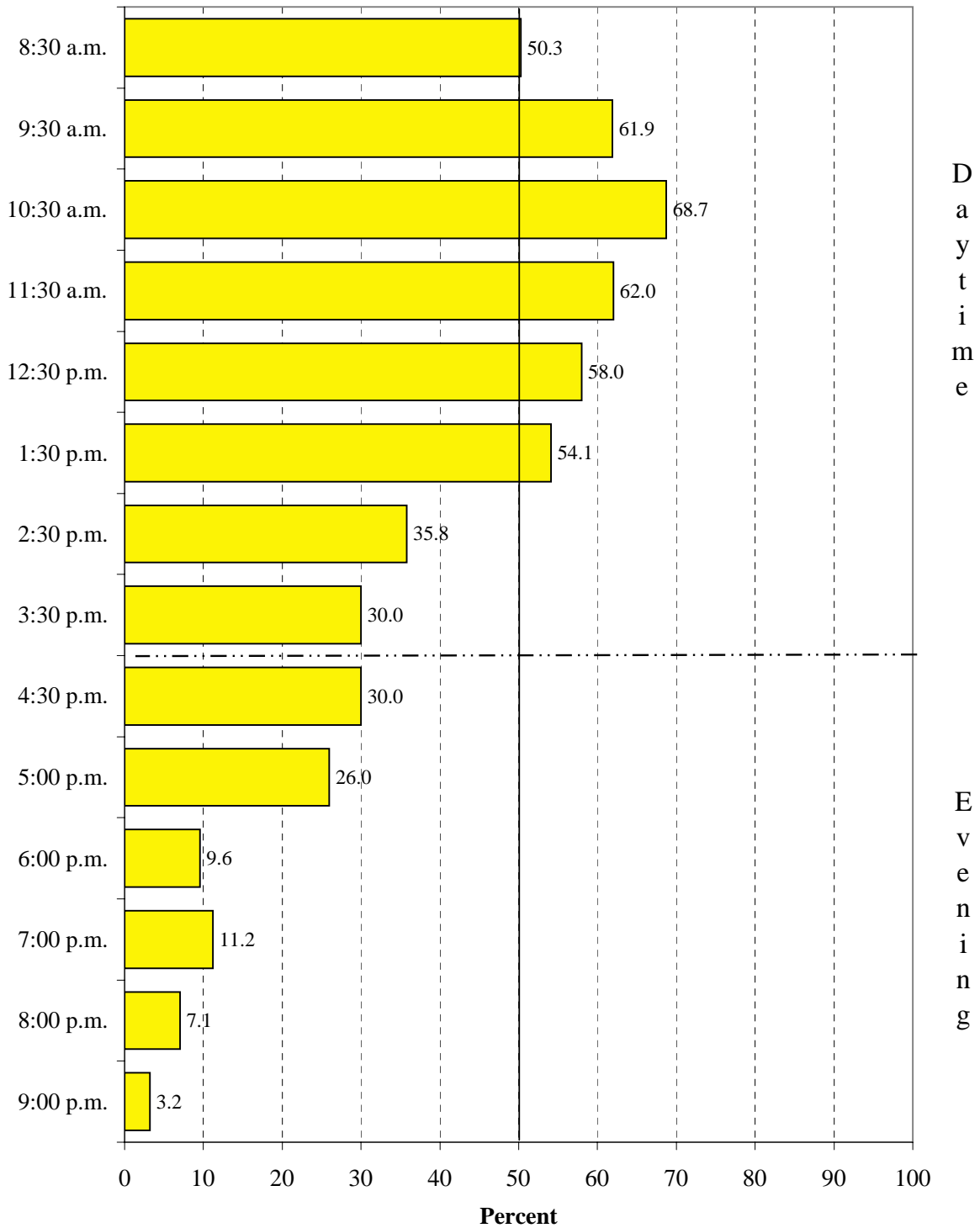
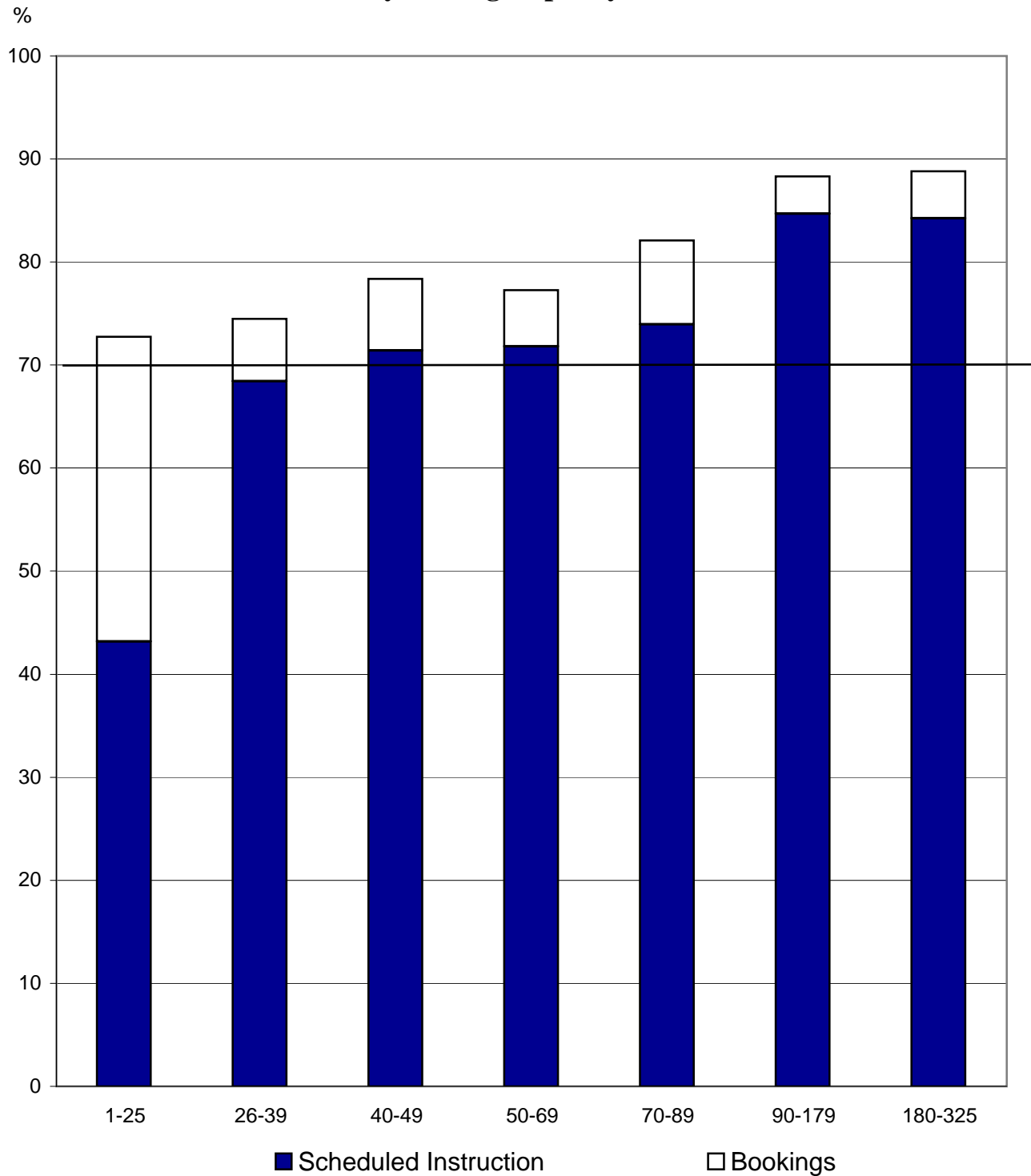


Table 1
2005/06 Monday to Friday Daytime Use by Seating Capacity

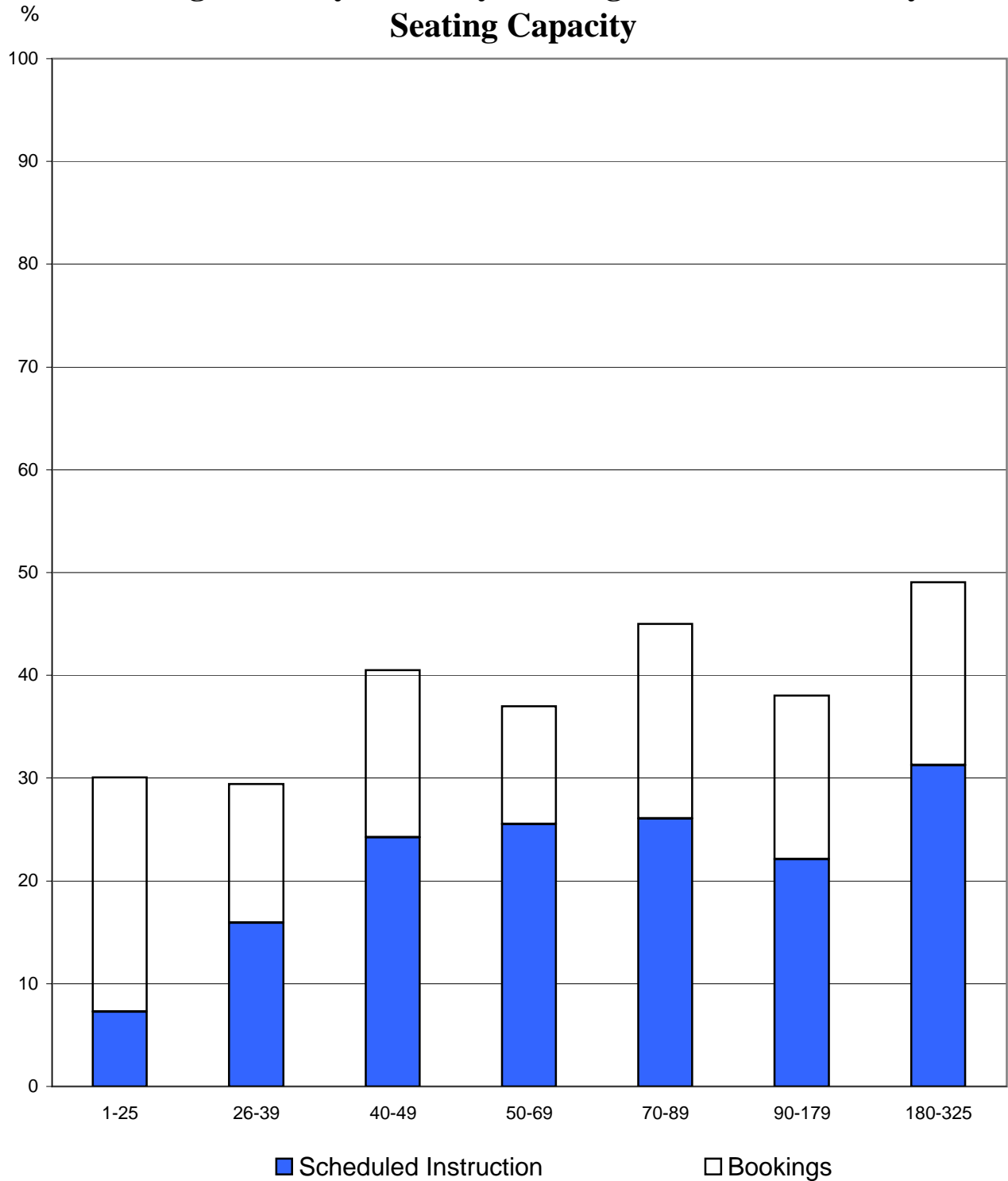
Seating Capacity	No. of Rooms	No. of Seats	Area in Sq. M.	Sq. M. per Seat	% Sched. Instr. Seat Use	% Sched. Instr. Seat Use	% Bookings Room Use	% Total Room Use
1-25	27	497	954	1.9	26.4	43.1	29.6	72.7
26-39	34	1,105	1,866	1.7	49.9	68.4	6.0	74.5
40-49	15	652	1,076	1.7	49.1	71.4	7.0	78.4
50-69	21	1,253	1,880	1.5	47.6	71.8	5.5	77.3
70-89	12	880	1,123	1.3	50.8	74.0	8.2	82.1
90-179	12	1,320	1,711	1.3	62.1	84.7	3.6	88.3
180-325	5	1,237	1,427	1.2	63.5	84.3	4.6	88.8
University Totals	126	6,944	10,035	1.4	52.6	66.6	11.4	78.0

Chart 10
University of Victoria
Average Monday to Friday Daytime Room Utilization
by Seating Capacity



Source: Scheduling data from October 2005 Student and Bookings Databases.

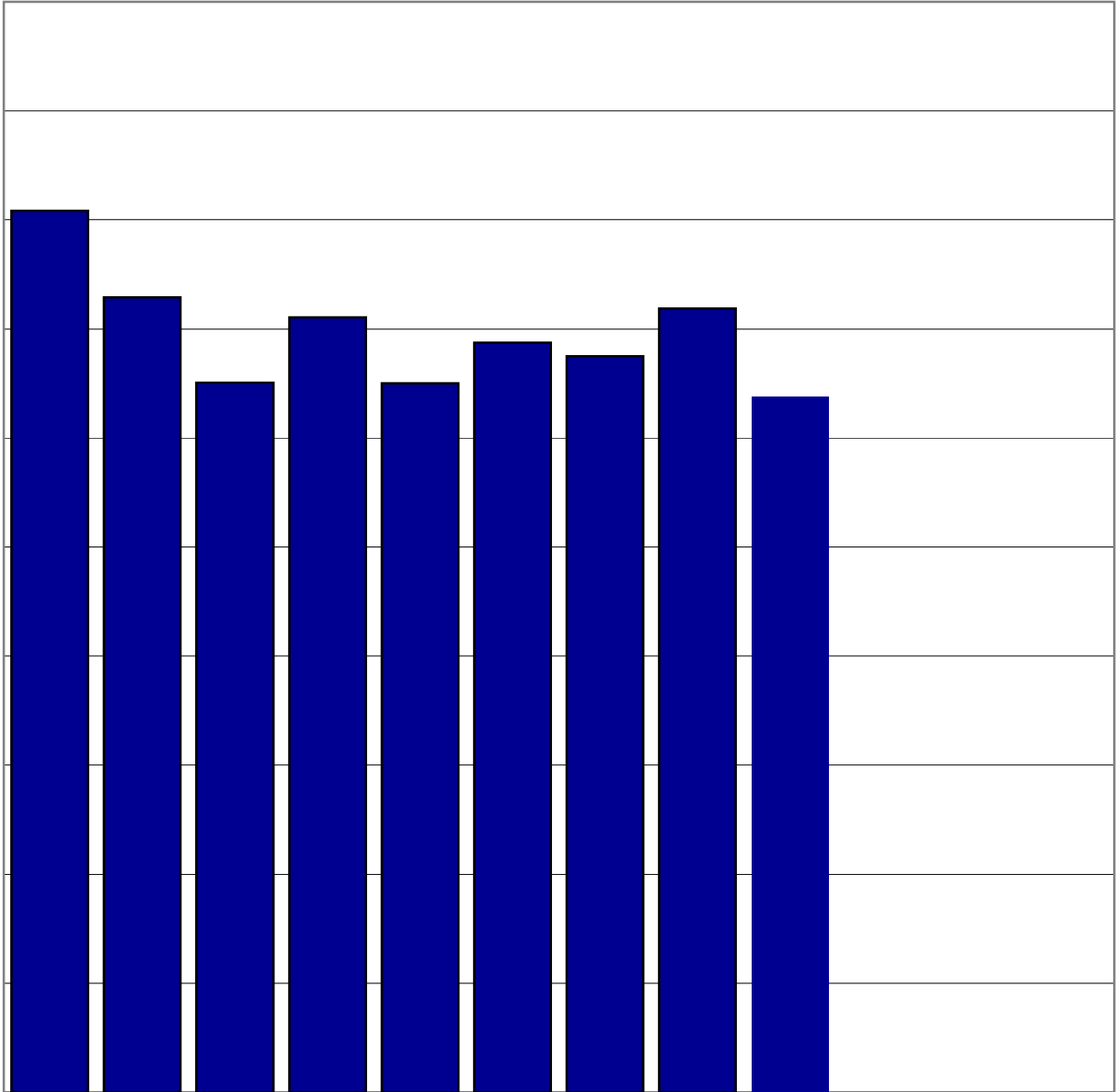
Chart 11
University of Victoria
Average Monday to Friday Evening Room Utilization by
Seating Capacity



Source: Scheduling data from October 2005 Student and Bookings Databases.

Table 2
2005/06 Monday to Friday Daytime Use by Building

Building	No. of Rooms	No. of Seats	Area in Sq. M.	Sq. M. per Seat	% Sched. Instr. Seat Use	% Sched. Instr. Room Use	% Bookings Room Use	% Total Room Use
H & SD (HSD)	3	208	295	1.4	59.1	81	4	84.7
Clearihue (CLE)	47	1,783	2,600	1.5	53.5	65	16	81.4
Hickman (HHB)	4	355	536	1.5	57.0	69	11	79.4
Cunningham (CUN)	1	58	77	1.3	33.8	68	10	77.8
Elliott (ELL)	8	681	881	1.3	52.0	72	6	77.4
Strong (DSB)	12	710	1,093	1.5	56.8	71	9	80.5
Cornett (COR)	19	1,146	1,508	1.3	57.0	73	10	82.7
Fine Arts (FIA)	3	103	180	1.7	51.3	64	10	73.9
McKinnon (McK)	2	145	198	1.4	36.8	63	9	71.1
Business & Economics (BEC)	1	30	68	2.3	32.9	65	15	80.5
MacLaurin (MAC)	19	1,135	1,599	1.4	52.0	65	7	72.0
Fraser (FRA)	7	590	1,000	1.7	40.3	48	7	54.9
University Totals	126	6,944	10,035	1.4	52.6	66.6	11.4	78.0



Source: Scheduling data from October 2005 Student and Bookings Databases.

Chart 15
University of Victoria
Average Monday to Friday Seat Utilization
for Scheduled Instruction by Building

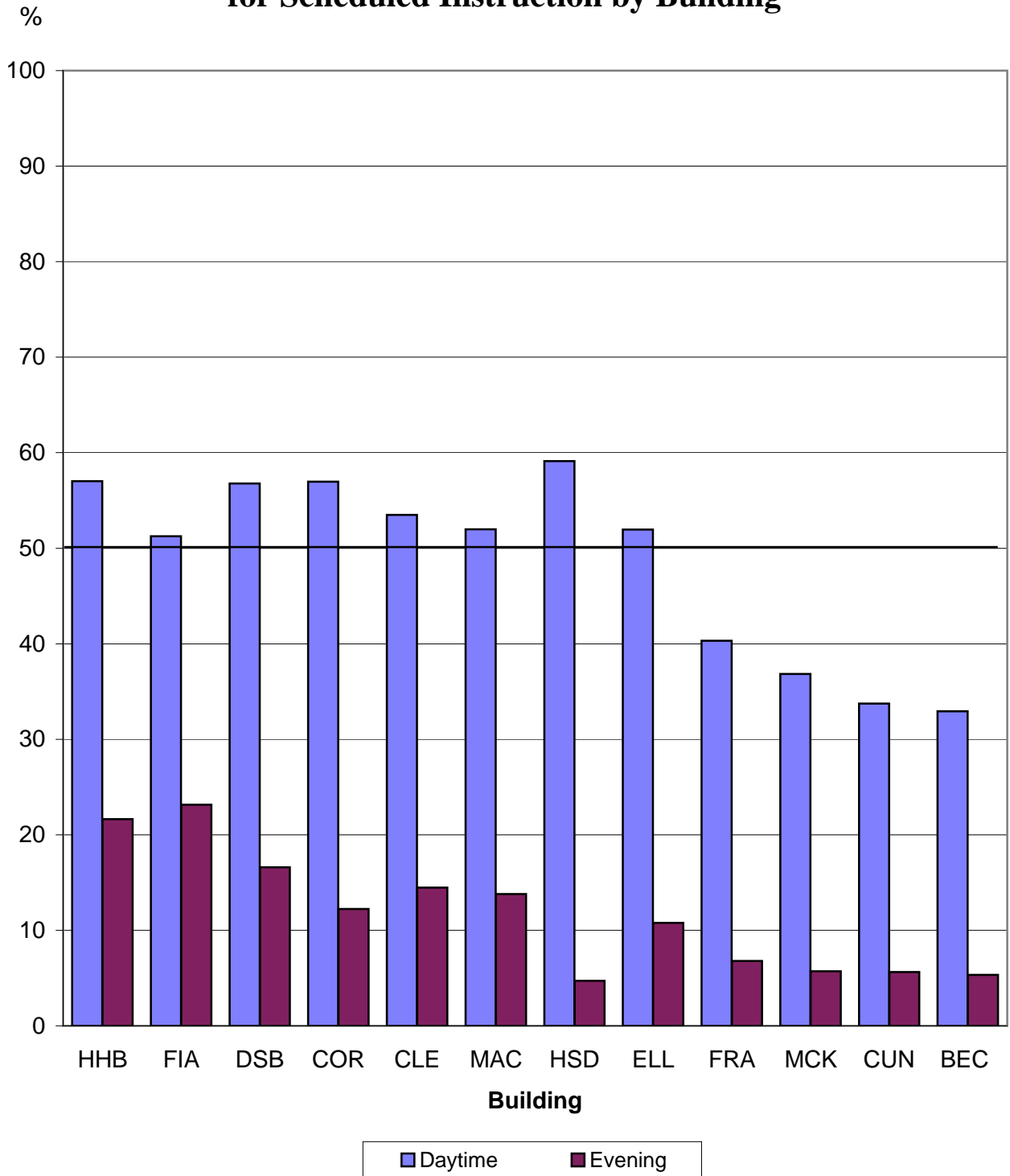


Table 3
Historical Monday to Friday Percentage Utilization Summary

APPENDIX

2005/06 Classroom Inventory

Room Size Interval	Room	No. of Seats	Area in Sq. M.	Sq. M. per Seat	Sched. Instr % Day Use	Bookings % Day Use	Total % Day Use
Less than 26	CLEB346	12	24.3	2.03	27.5	24.5	52.0
	CLEC116	12	22.1	1.84	50.0	17.1	67.1
	CLEC118	12	22.1	1.84	50.0	9.3	59.3
	CORA372	12	37.7	3.14	32.5	15.6	48.1
	CLEB446	14	24.3	1.74	12.5	85.0	97.5
	CLED261	14	25.7	1.84	36.2	11.6	47.8
	CORA132	14	27.5	1.96	65.0	4.7	69.7
	CLEC214	16	26.5	1.66	55.0	16.7	71.7

APPENDIX

2005/06 Classroom Inventory

Room Size Interval	Room	No. of Seats	Area in Sq. M.	Sq. M. per Seat	Sched. Instr % Day Use	Bookings % Day Use	Total % Day Use
	CLED131	35	50.2	1.43	80.0	3.5	83.5
	CLED132	35	58.8	1.68	67.5	1.3	68.8

APPENDIX

2005/06 Classroom Inventory

Room Size Room No. of Area in Sq. M. Sched. Instr