

University of Victoria

Classroom Utilization Report
2004/05

Prepared by: Jim Martell
Alan Wilson

Office of Institutional Planning and Analysis
November, 2005

<http://www.inst.uvic.ca>

Classroom Utilization

2004-2005

Table of Contents

Introduction

Chart 1	—	Monday Room Utilization by Starting Time
Chart 2	—	Tuesday Room Utilization by Starting Time
Chart 3	—	Wednesday Room Utilization by Starting Time
Chart 4	—	Thursday Room Utilization by Starting Time
Chart 5	—	Friday Room Utilization by Starting Time
Chart 6	—	Saturday Room Utilization by Starting Time
Chart 7	—	Average Monday to Friday Room Utilization by Starting Time
Chart 8	—	Monday to Friday Seat Utilization for Scheduled Instruction by Starting Time
Chart 9	—	Average Monday to Friday Seat Utilization for Scheduled Instruction by Starting Time
Table 1	—	Monday to Friday Daytime Use by Seating Capacity
Chart 10	—	Average Monday to Friday Daytime Room Utilization by Seating Capacity
Chart 11	—	Average Monday to Friday Evening Room Utilization by Seating Capacity
Chart 12	—	Average Monday to Friday Seat Utilization for Scheduled Instruction by Room Capacity
Table 2	—	Monday to Friday Daytime Use by Building
Chart 13	—	Average Monday to Friday Daytime Room Utilization by Building
Chart 14	—	Average Monday to Friday Evening Room Utilization by Building
Chart 15	—	Average Monday to Friday Seat Utilization for Scheduled Instruction by Building
Table 3	—	Historical Monday to Friday Percentage Utilization Summary
APPENDIX	—	2004/05 Classroom Inventory

Introduction

Classroom Utilization 2004/05

Methodology

This report displays the level of classroom use as of October 2004. Two components are identified: scheduled instruction and bookings. Scheduled instruction consists of regular classroom instruction and includes lectures, tutorials, some discussion groups, and labs offered in classrooms. Bookings consist of more casual classroom use, such as staff and department meetings, club usage, and conferences. No bookings are included with scheduled instruction data. However, some usage included with the bookings is actually composed of tutorials and other sections associated with regular courses. This activity can appear here due to limitations in the university course database, which cannot handle courses that meet in one room for a part of a term and then move, in that term, to another room. The system also cannot handle some short-term immersion-type courses that meet throughout the day.

Room use is divided into two time periods: daytime (8:30 a.m. – 4:30 p.m.) and evening (4:30 p.m. – 10:00 p.m.). Note that a room in use from 5:30 p.m. – 6:30 p.m. will fill the 5:30 – 6:00 time slot and half the 6:00 – 7:00 time slot. A 70% daytime room use rate is considered by many as a reasonable target. Hence a line at 70% appears on all charts that tabulate room usage. For seat use, 50% is considered a reasonable target. Hence a line at 50% appears on all charts that tabulate seat usage. Note, however, that seat usage for bookings data is not maintained. This means that all seat-use results will be for scheduled instruction only.

Results

Charts 1 – 6 show daily room utilization for both scheduled instruction and bookings. Overall room usage from Monday through Thursday varies only slightly, from a low of 60.3% on Tuesday to a high of 62.6% Wednesday. Room usage drops to 43.5% on Friday, mainly because scheduled instruction drops off dramatically in the afternoon and evening. Charts 8 and 9 detail seat use for scheduled instruction and show a similar pattern to room usage.

Table 1 and Charts 10 – 12 examine utilization by room-size category. Larger rooms are, on the whole, used more frequently than smaller ones, although for bookings the smallest rooms (less than 26 seats) are used more than all other rooms combined. Table 2 and Charts 13 – 15 examine utilization by building. The most heavily used buildings are Cornett, Clearihue, and Business & Economics, which average over 80% daytime usage. The least-used classrooms continue to be in the Fraser building, although daytime room usage there has increased to 58.3% from 57.5% in 2002 and 49.2% in 2001. Table 3 summarizes historical classroom use. Room utilization continues to rise; at 76.5% it is back to mid 1990s levels – up from a low of 71.4% in 2001/02. Current seat usage for scheduled instruction is about the same as in recent years. The appendix details use by individual classroom.

Chart 1

University of Victoria

Monday Room Utilization by Starting Time

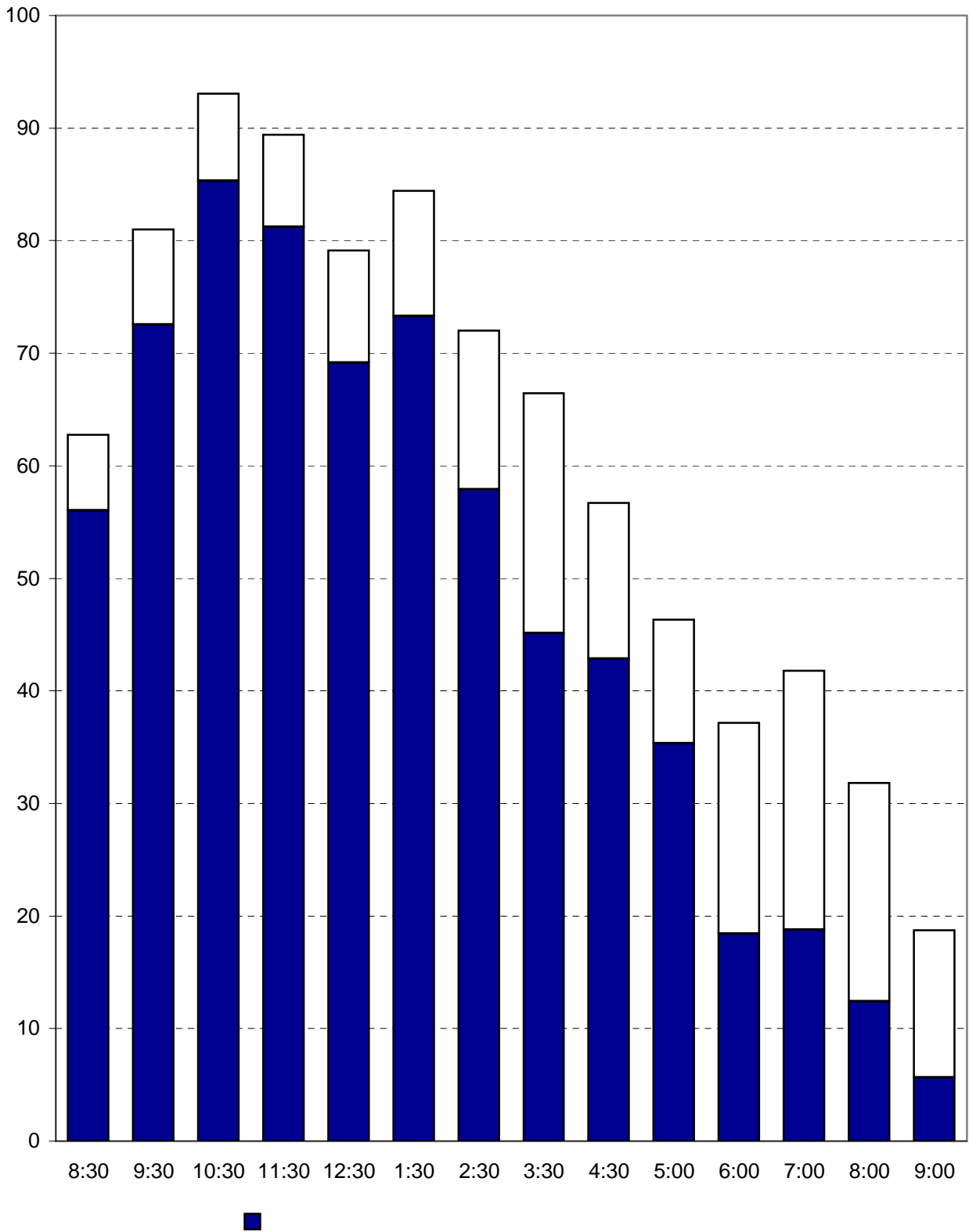


Chart 2 University of Victoria Tuesday Room Utilization by Starting Time

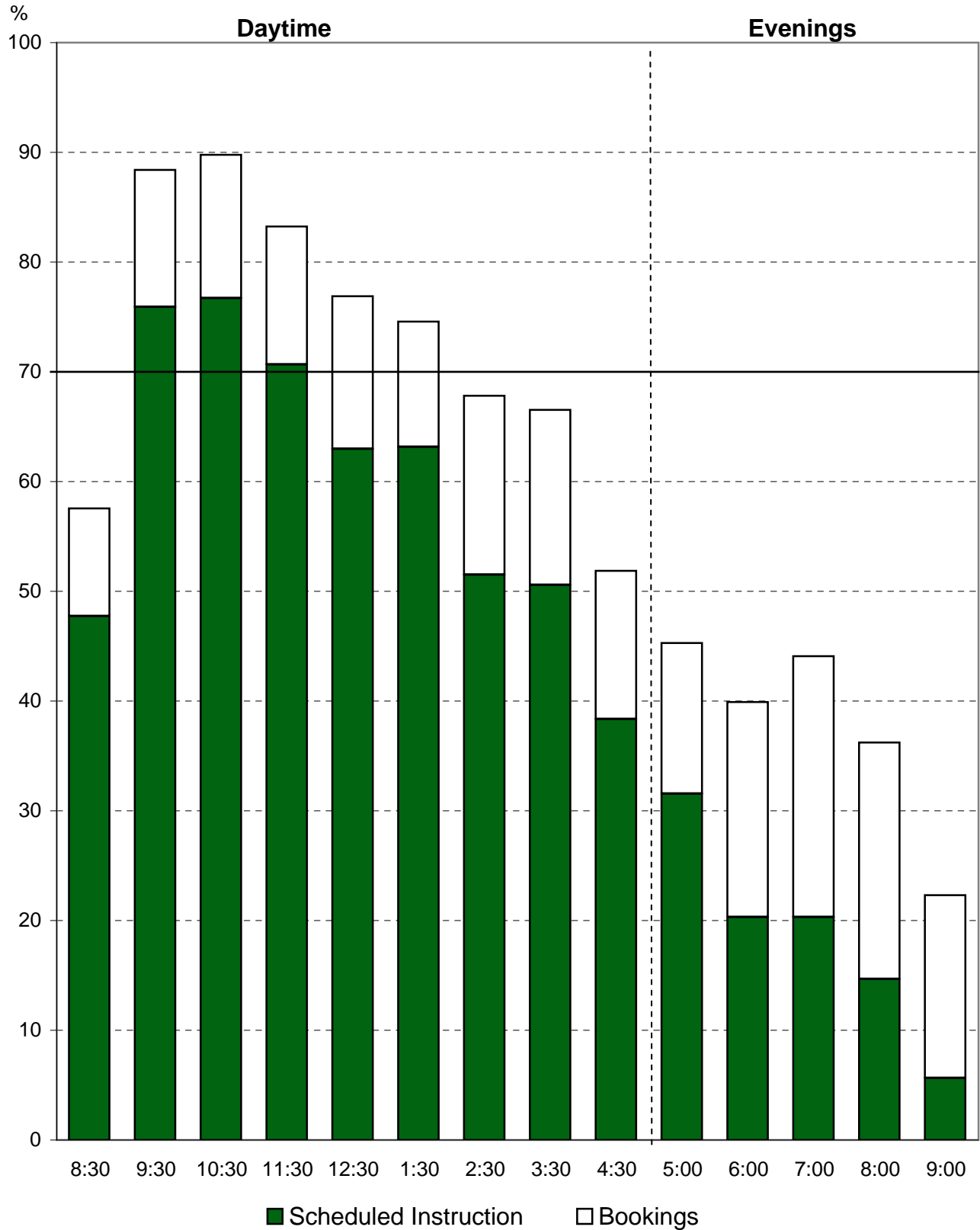
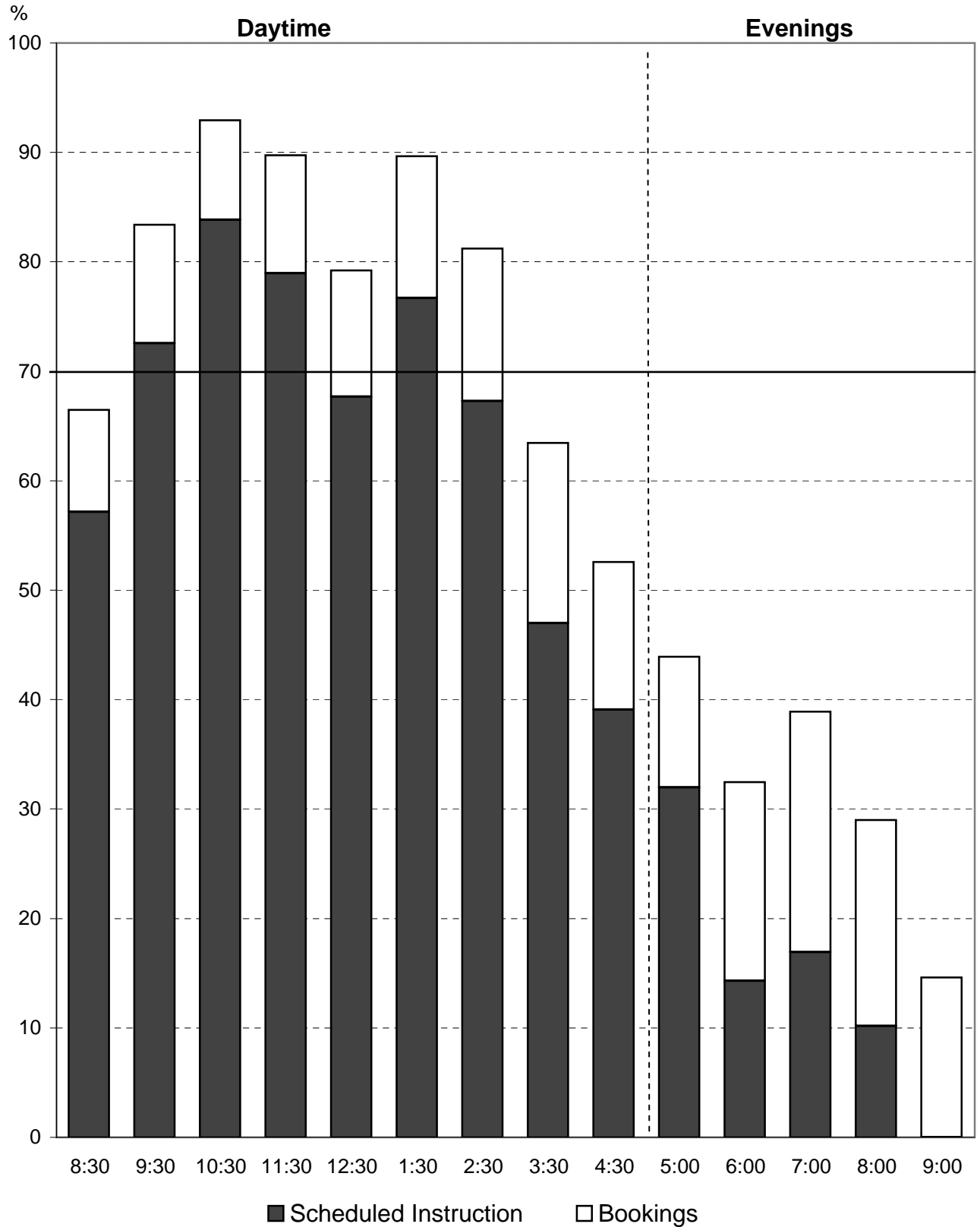
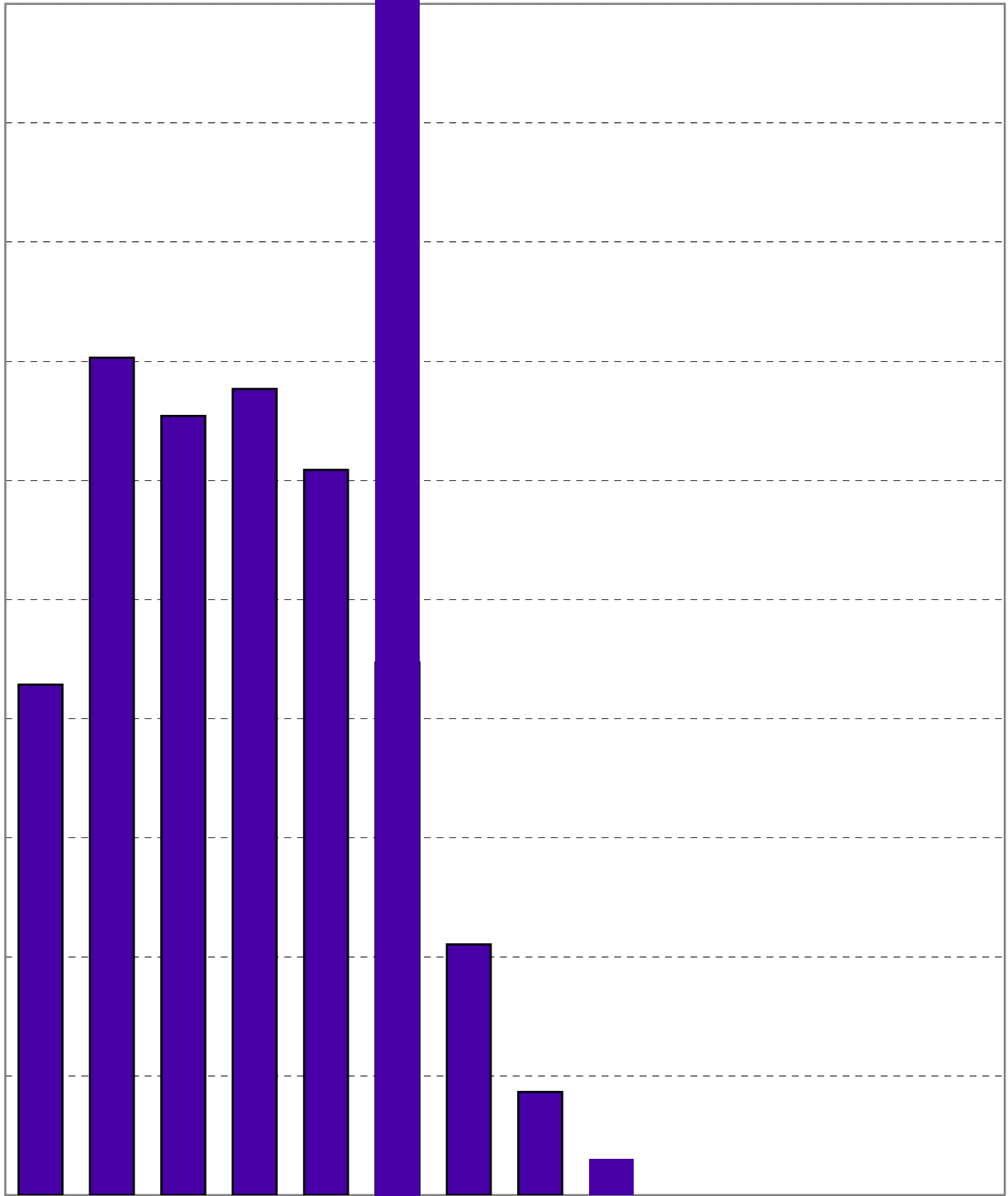


Chart 4

University of Victoria

Thursday Room Utilization by Starting Time

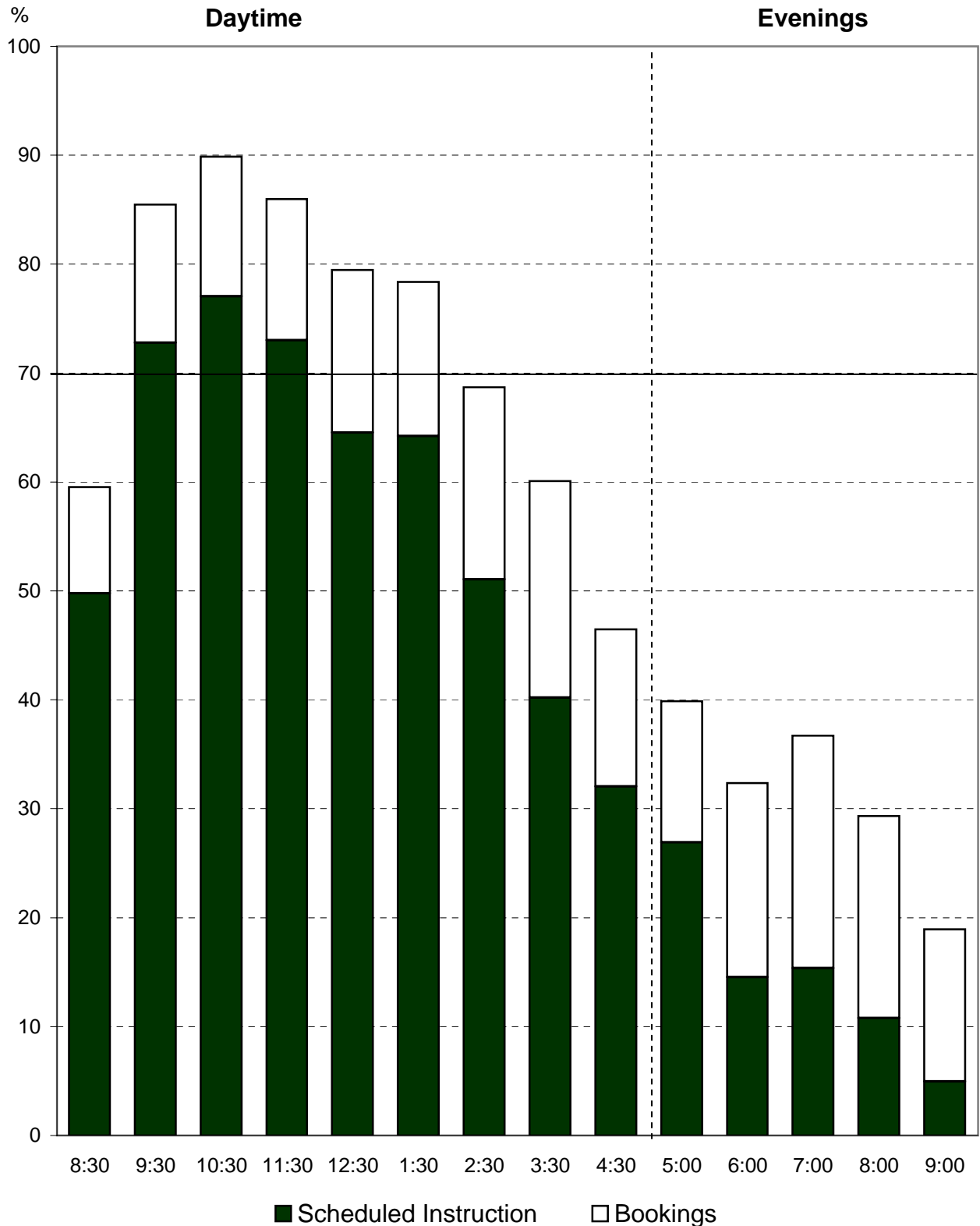




Source: Scheduling data from October 2004 Student and Bookings Databases

Institutional Planning and Analysis
November 2005

Chart 7
University of Victoria
Average Monday to Friday Room Utilization
by Starting Time



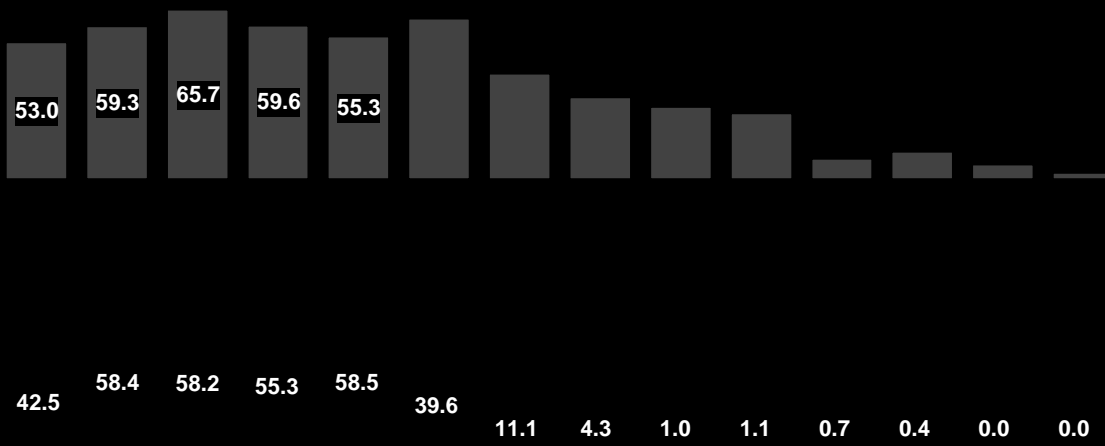


Chart 9
University of Victoria
Average Monday to Friday Seat Utilization
for Scheduled Instruction By Starting Time

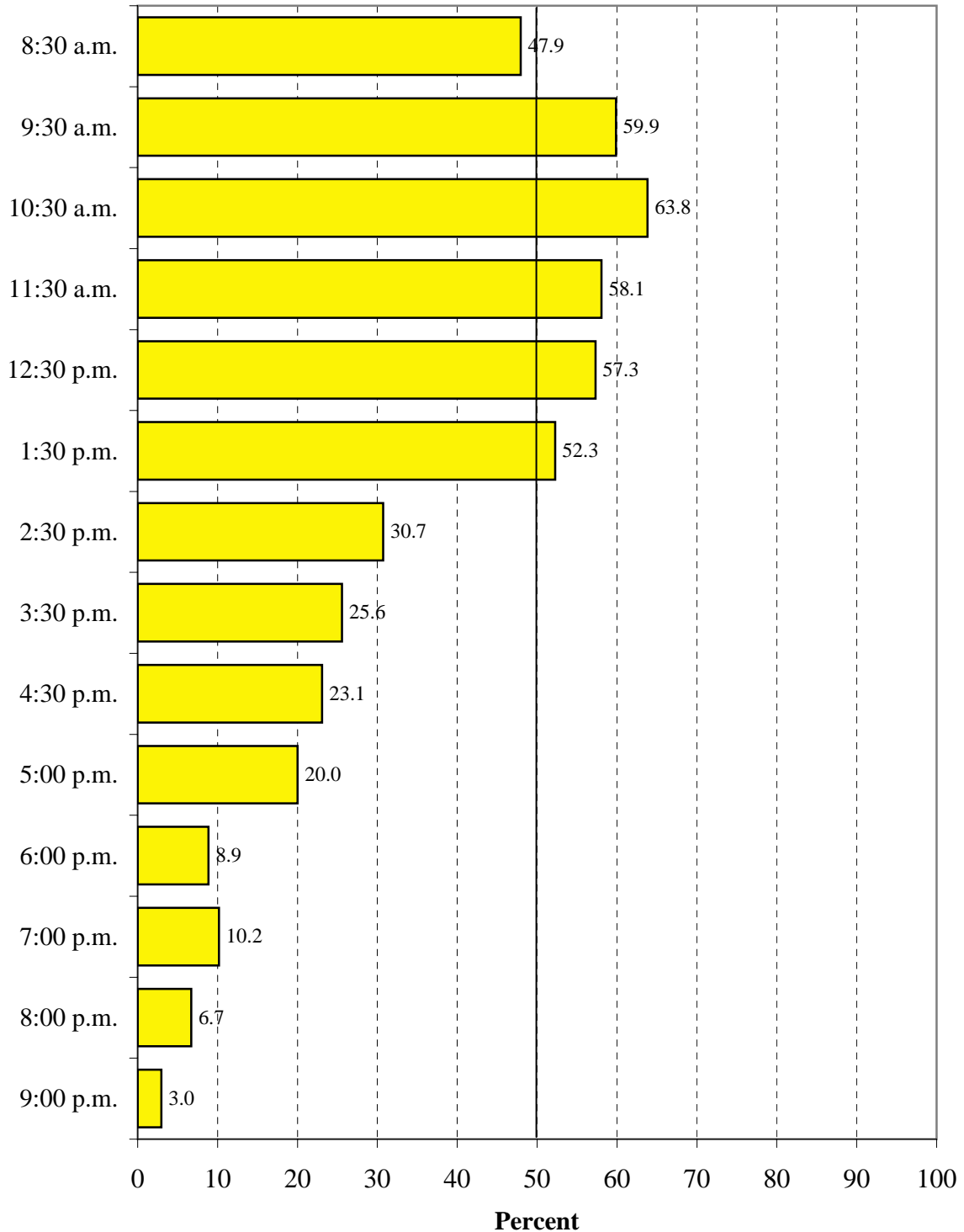
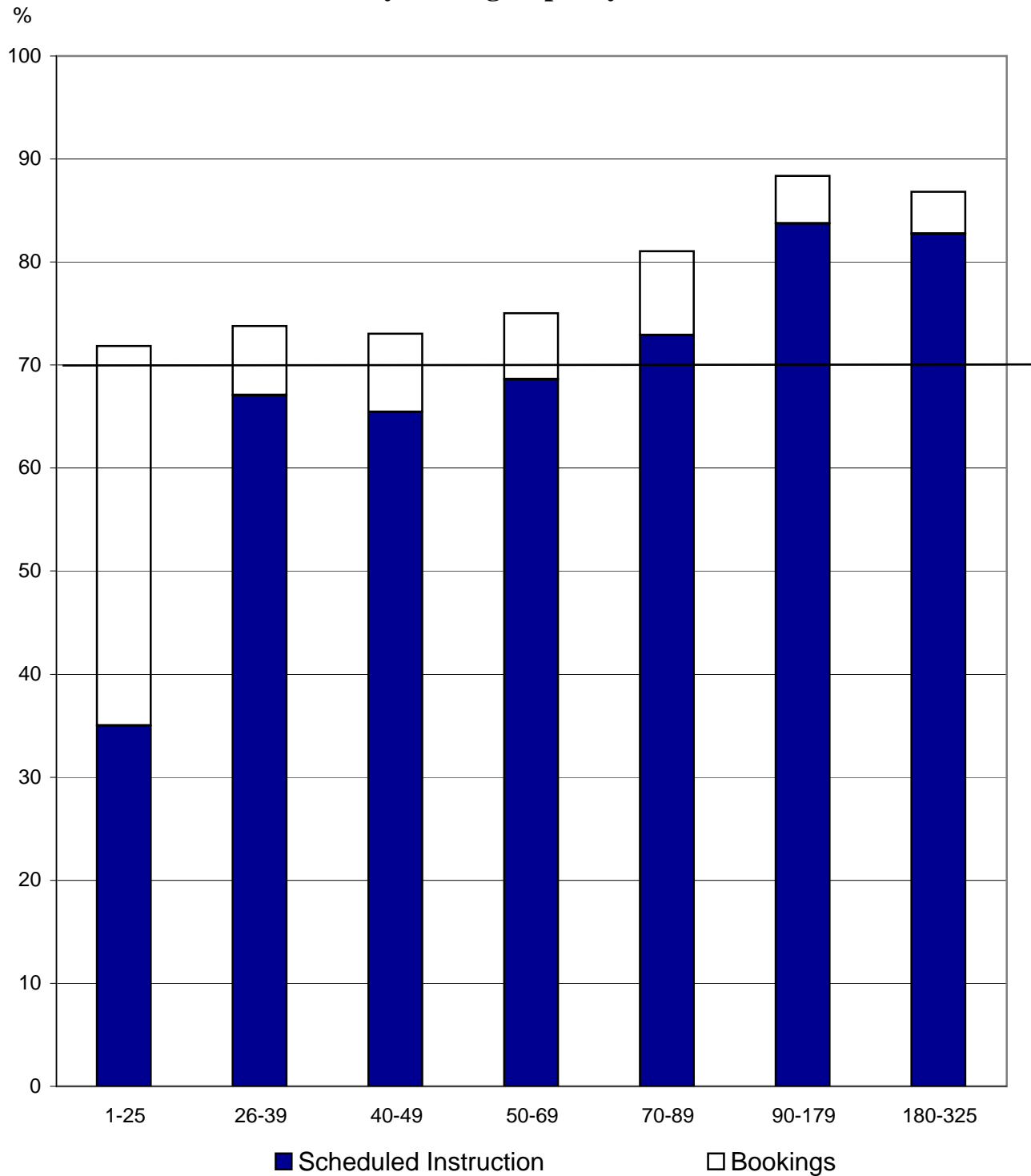


Table 1
2004/05 Monday to Friday Daytime Use by Seating Capacity

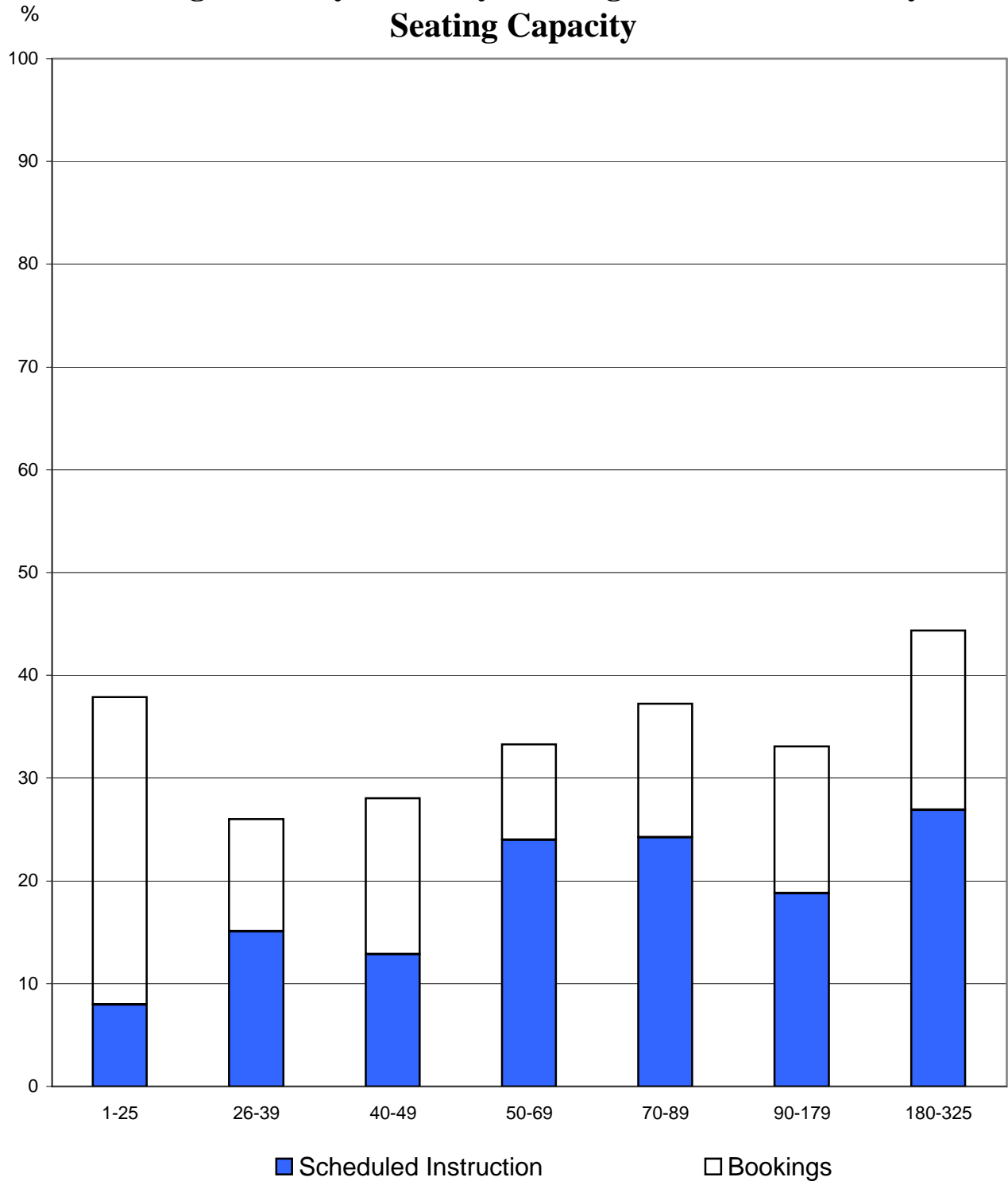
Seating Capacity	No. of Rooms	No. of Seats	Area in Sq. M.	Sq. M. per Seat	% Sched. Instr. Seat Use	% Sched. Instr. Seat Use	% Bookings Room Use	% Total Room Use
1-25	34	591	1,128	1.9	24.3	35.0	36.8	71.8
26-39	33	1,071	1,846	1.7	46.3	67.1	6.7	73.8
40-49	15	647	1,076	1.7	45.2	65.4	7.6	73.0
50-69	22	1,307	1,971	1.5	46.6	68.6	6.4	75.1
70-89	12	880	1,123	1.3	47.1	72.9	8.2	81.1
90-179	12	1,320	1,711	1.3	60.6	83.8	4.6	88.4
180-325	5	1,237	1,427	1.2	59.2	82.8	4.1	86.8
University Totals	133	7,053	10,281	1.5	49.5	61.6	14.3	75.9

Chart 10
University of Victoria
Average Monday to Friday Daytime Room Utilization
by Seating Capacity



Source: Scheduling data from October 2004 Student and Bookings Databases.

Chart 11
University of Victoria
Average Monday to Friday Evening Room Utilization by
Seating Capacity



Source: Scheduling data from October 2004 Student and Bookings Databases.

Chart 12
University of Victoria

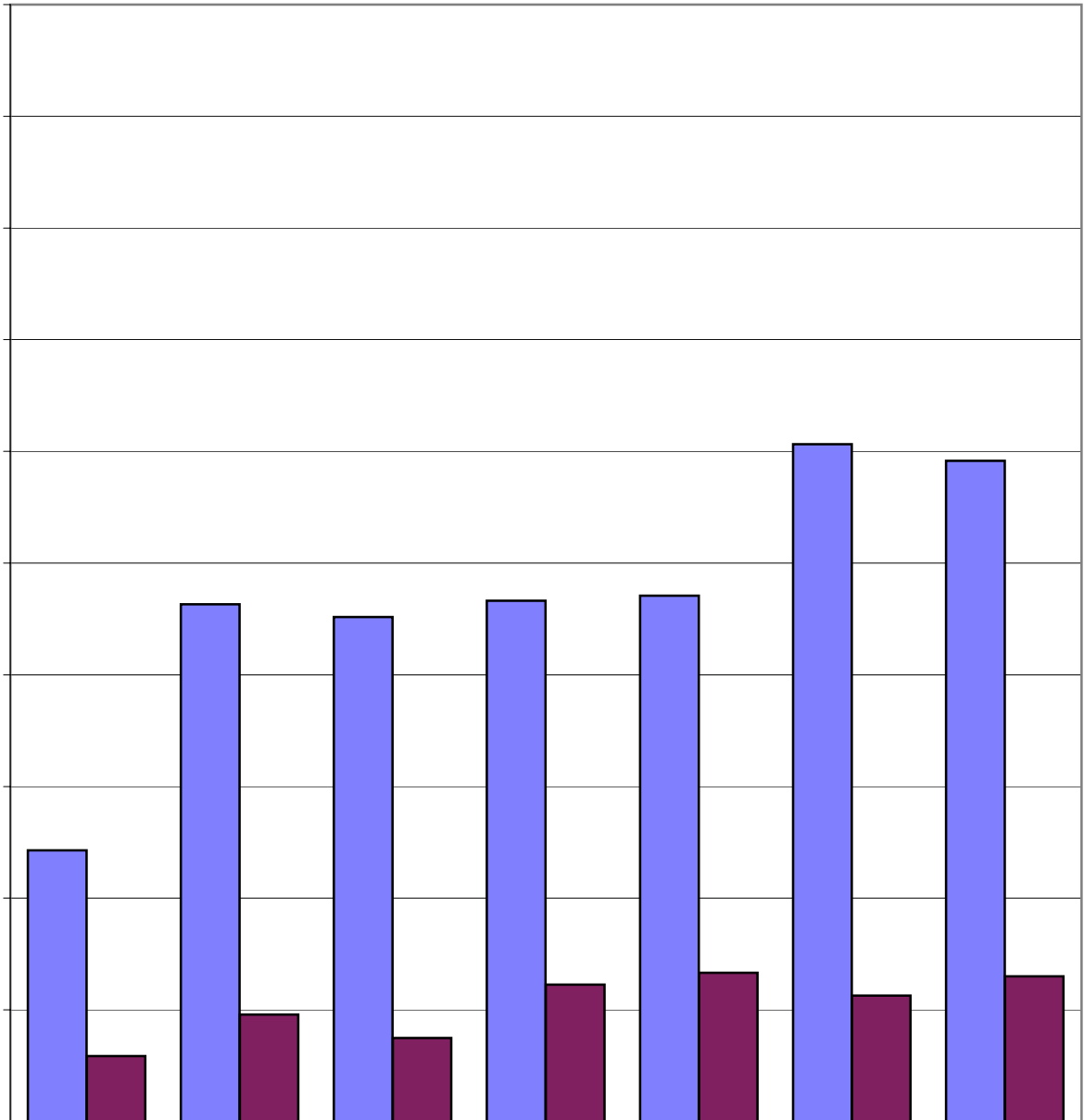
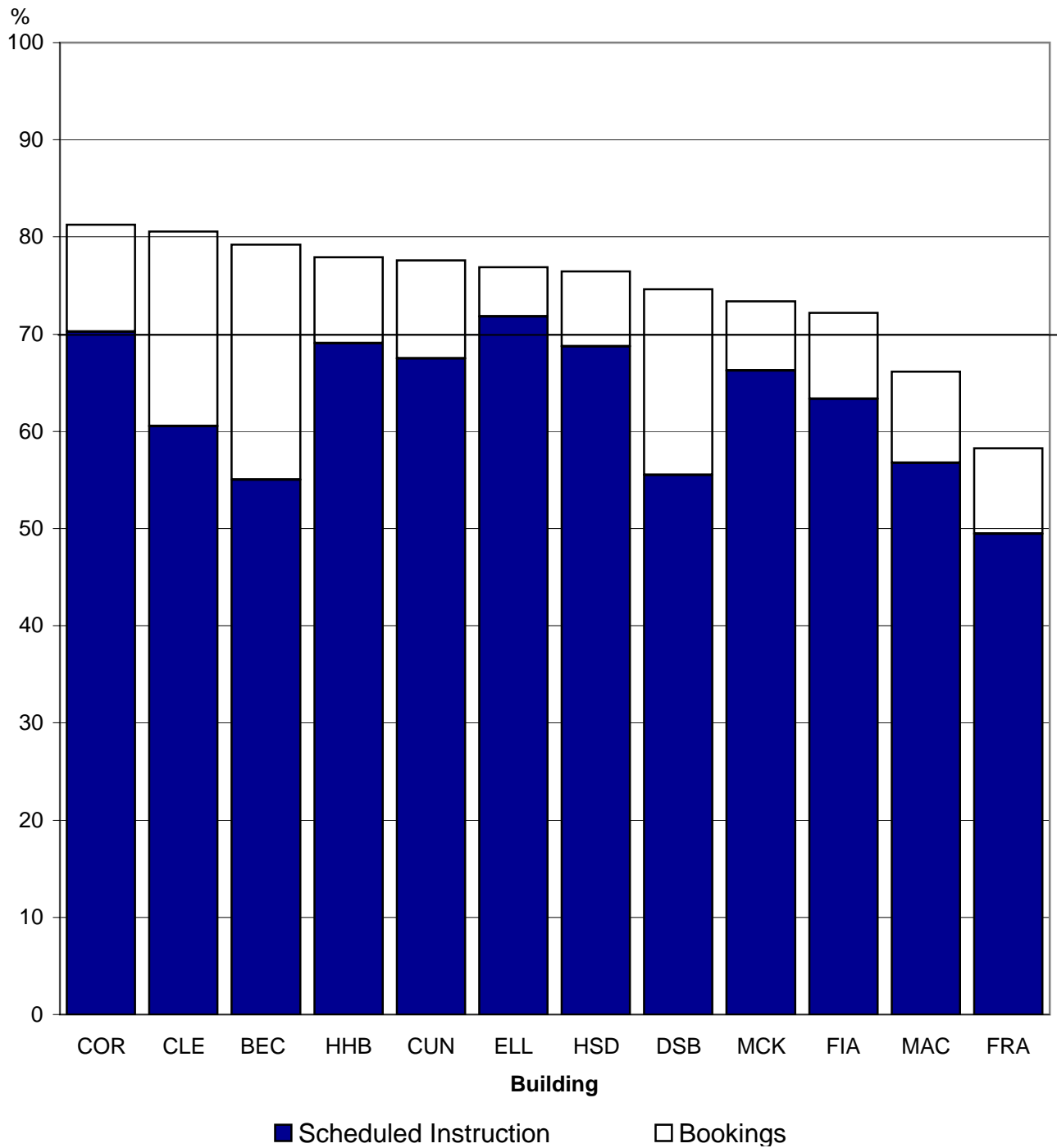


Table 2
2004/05 Monday to Friday Daytime Use by Building

Building	No. of Rooms	No. of Seats	Area in Sq. M.	Sq. M. per Seat	% Sched. Instr. Seat Use	% Sched. Instr. Room Use	% Bookings Room Use	% Total Room Use
H & SD (HSD)	4	238	357	1.5	52.2	69	8	76.4
Clearihue (CLE)	47	1,768	2,408	1.4	50.6	61	20	80.6
Hickman (HHB)	4	355	536	1.5	55.7	69	9	77.9
Cunningham (CUN)	1	58	77	1.3	23.8	68	10	77.6
Elliott (ELL)	9	703	924	1.3	56.2	72	5	76.9
Strong (DSB)	17	788	1,185	1.5	53.6	56	19	74.6
Cornett (COR)	19	1,136	1,627	1.4	54.6	70	11	81.3
Fine Arts (FIA)	3	103	180	1.7	47.6	63	9	72.2
McKinnon (McK)	2	145	198	1.4	35.1	66	7	73.4

Chart 13
University of Victoria
Average Monday to Friday Daytime Room Utilization
by Building



Source: Scheduling data from October 2004 Student and Bookings Databases.

Chart 14
University of Victoria
Average Monday to Friday Evening Room Utilization
by Building

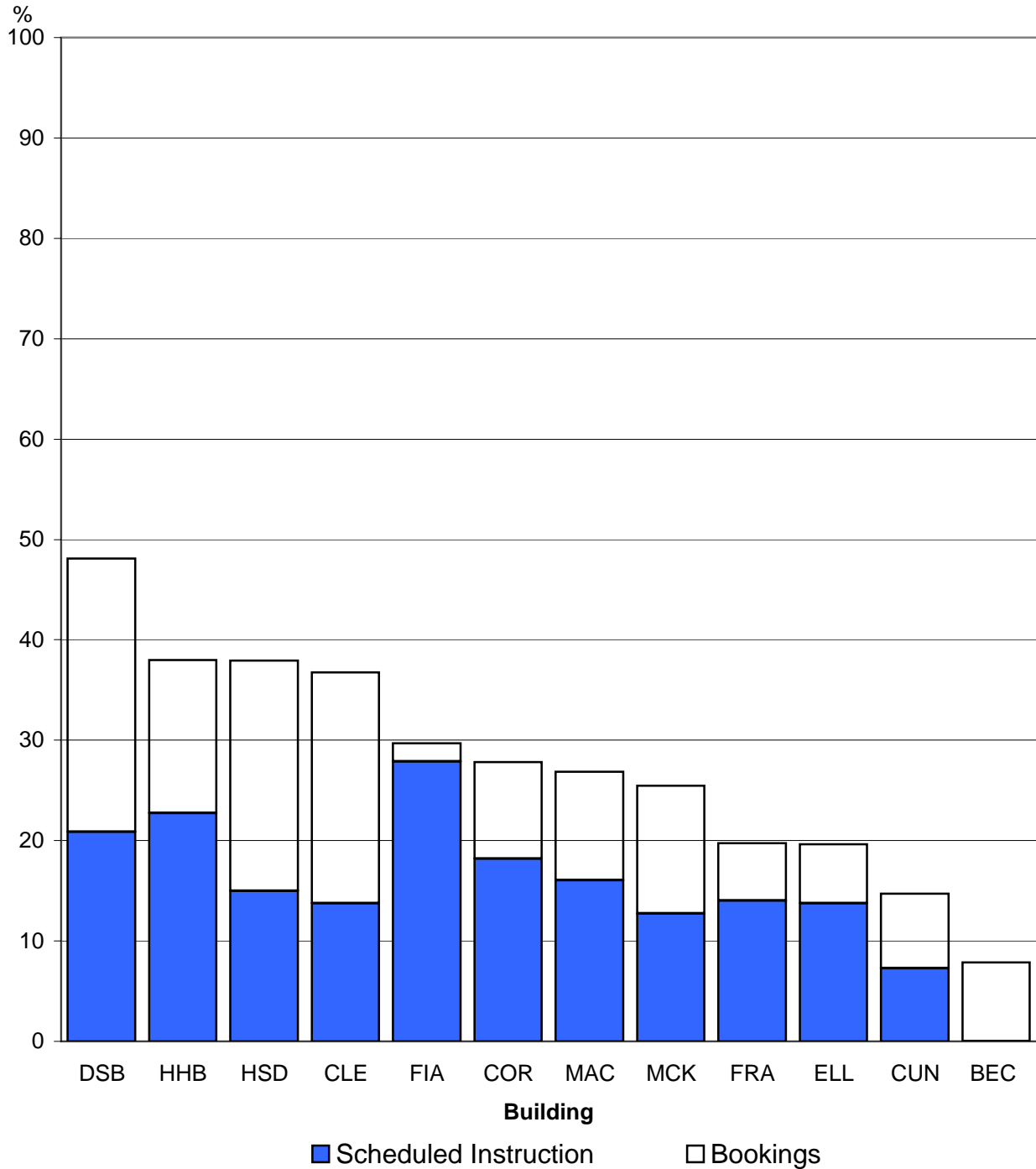


Chart 15
University of Victoria
Average Monday to Friday Seat Utilization
for Scheduled Instruction by Building

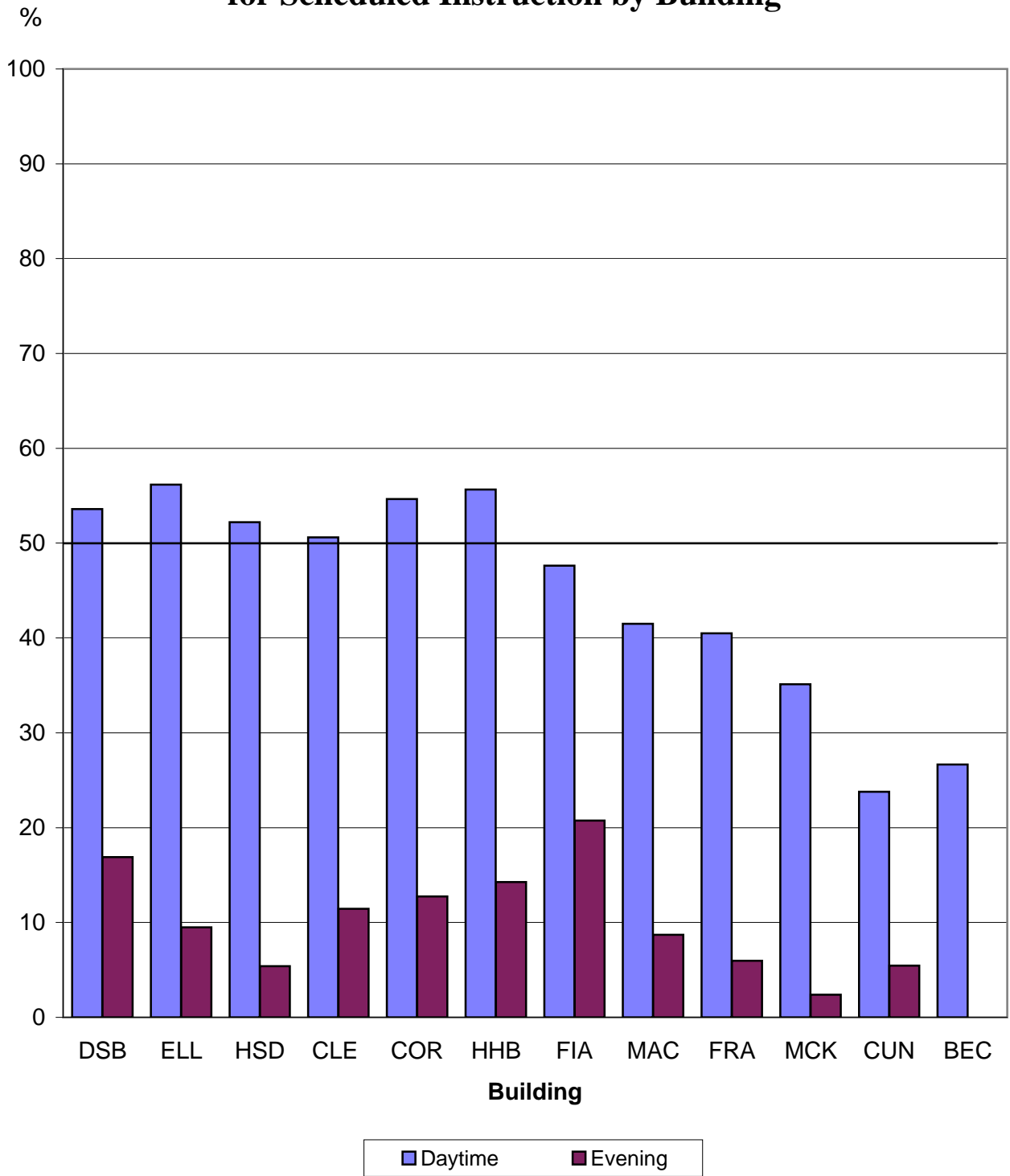


Table 3
Historical Monday to Friday Percentage Utilization Summary

Room Utilization

Day	91/92	92/93	93/94	94/95	95/96	96/97	97/98	01/02	02/03	04/05
Scheduled Instruction	70.9	66.9	64.5	63.1	67.4	67.6	62.7	59.5	60.6	62.0
Bookings	12.8	12.0	11.8	11.7	10.6	10.5	10.2	11.9	11.8	14.4
Total	83.7	78.9	76.3	74.8	78.0	78.1	72.9	71.4	72.4	76.5

Evening

Scheduled Instruction	18.9	17.4	18.5	18.9	19.0	17.4	15.0	11.9	15.3	16.1
Bookings	12.1	14.8	14.1	14.0	13.5	13.2	11.2	8.4	7.8	16.7
Total	31.0	32.2	32.6	32.9	32.5	30.6	26.2	20.3	23.1	32.8

Seat Utilization

(Scheduled Instruction)

Day	53.2	50.2	47.5	47.6	53.3	55.1	52.3	50.7	49.0	49.5
Evening	10.7	9.8	10.9	10.1	11.4	10.6	10.0	11.5	10.3	11.0

APPENDIX

2004/05 Classroom Inventory

Room Size Interval	Room	No. of Seats	Area in Sq. M.	Sq. M. per Seat	Sched. Instr % Day Use	Bookings % Day Use	Total % Day Use
Less than 26	DSBC109	6	12.6	2.10	0.0	59.3	59.3

APPENDIX
2004/05 Classroom Inventory

Room Size Interval	Room	No. of Seats	Area in Sq. M.	Sq. M. per Seat	Sched. Instr % Day Use	Bookings % Day Use	Total % Day Use
	CLEC108	32	57.1	1.78	75.0	2.1	77.1
	CORA128	32	41.4	1.29	80.0	3.5	83.5
	FRA142	32	80.8	2.53	32.5	6.3	38.8
	FIA104	33	59.5	1.80	65.0	5.4	70.4
	CLEA118	34	55.7	1.64	97.5	1.5	99.0
	CLED126	35	58.7	1.68	87.5	2.2	89.7
	CLED131	35	50.2	1.43	90.0	1.5	91.5
	CLED132	35	58.8	1.68	62.5	12.2	74.7
	DSBC126	35	68.0	1.94	77.5	4.6	82.1
	DSBC128	35	67.3	1.92	75.0	6.0	81.0
	DSBC130	35	67.7	1.93	82.5	4.2	86.7
	MACD115	35	47.8	1.37	72.5	2.3	74.8
	CORB145	36	76.4	2.12	82.5	5.9	88.4
	CLEA211	37	51.6	1.39	75.0	2.7	77.7
	CLEC109	37	53.4	1.44	72.5	0.5	73.0
	CLEA203	38	60.0	1.58	95.0	2.0	97.0
	CLEA204	38	48.0	1.26	76.2	5.7	81.9
	MCK155	38	61.0	1.61	52.5	8.5	61.0
	33	1,071	1,845.7	1.72	66.2	6.6	72.8
40 to 49	CORA148	40	84.2	2.11	85.0	8.4	93.4
	DSBC113	40	88.0	2.20	77.5	8.2	85.7
	HHB116	40	116.6	2.92	82.5	4.0	86.5
	MACD287	40	91.0	2.28	65.0	9.2	74.2
	CLEC110	42	57.8	1.38	75.0	2.3	77.3
	CLED125	42	50.2	1.20	70.0	7.0	77.0
	CLED267	42	31.2	0.74	62.5	3.0	65.5
	CLEA306	44	64.1	1.46	67.5	14.3	81.8
	MACD283	44	57.8	1.31	50.0	9.0	59.0
	DSBC108	45	70.5	1.57	67.5	6.7	74.2
	MACA168	45	75.9	1.69	28.7	7.7	36.4
	MACD101	45	84.4	1.88	62.5	7.0	69.5
	MACD103	45	84.4	1.88	55.0	8.7	63.7
	MACD114	45	56.0	1.24	52.5	16.3	68.8
	CLEA206	48	64.1	1.34	80.0	1.7	81.7
	15	647	1,076.2	1.66	65.4	7.6	73.0

APPENDIX
2004/05 Classroom Inventory

Room Size Interval	Room	No. of Seats	Area in Sq. M.	Sq. M. per Seat	Sched. Instr % Day Use	Bookings % Day Use	Total % Day Use
	CORB107	60	67.2	1.12	70.0	15.6	85.6
	DSBC112	60	93.8	1.56	82.5	6.0	88.5
	FRA152	60	134.9	2.25	50.0	8.2	58.2
	MACA169	60	82.0	1.37	60.0	10.5	70.5
	CLEA301	62	74.7	1.20	72.5	0.1	72.6
	CORA229	62	79.6	1.28	77.5	7.9	85.4
	CLEA309	63	88.4	1.40	55.0	5.6	60.6
	CLEA303	64	73.4	1.15	85.0	10.0	95.0
	FRA158	65	168.9	2.60	45.0	11.8	56.8
	ELL060	68	86.7	1.28	60.0	5.6	65.6
	ELL061	68	86.1	1.27	63.7	5.8	69.5
	CLEA201	69	87.5	1.27	81.2	5.5	86.7
	22	1,307	1,971.3	1.51	68.6	6.4	75.0
70 to 89	CORA125	70	82.9	1.18	90.0	2.3	92.3
	CORA225	70	82.9	1.18	52.5	14.6	67.1
	MACD110	70	86.8	1.24	72.5	3.6	76.1
	MACD116	70	86.3	1.23	62.5	15.4	77.9
	DSBC116	73	128.7	1.76	57.5	14.9	72.4
	DSBC122	73	128.8	1.76	80.0	12.2	92.2
	CLEA307	74	88.0	1.19	67.5	1.6	69.1
	CLEA311	74	89.8	1.21	75.0	3.7	78.7
	DSBC118	74	88.0	1.19	87.5	3.9	91.4
	HHB110	75	52.7	0.70	42.5	22.7	65.2
	CLEC112	77	115.7	1.50	92.5	2.5	95.0
	ELL062	80	91.9	1.15	95.0	0.0	95.0
	12	880	1,122.5	1.28	72.9	8.1	81.0
90 to 179	CORA121	90	109.1	1.21	72.5	11.5	84.0
	CLEA207	92	129.7	1.41	87.5	4.2	91.7
	CORA120	94	103.0	1.10	77.5	2.5	80.0
	CORA221	95	109.1	1.15	81.2	7.9	89.1
	CORB143	96	117.1	1.22	87.5	0.0	87.5
	MCK150	107	137.2	1.28	80.0	5.6	85.6
	CORB108	108	133.4	1.24	95.0	1.7	96.7
	CORB112	108	132.8	1.23	90.0	1.5	91.5
	MACD288	110	147.4	1.34	68.7	8.0	76.7
	CLEA127	118	212.1	1.80	85.0	6.6	91.6
	ELL167	148	198.1	1.34	90.0	1.2	91.2
	HSDA240	154	182.1	1.18	90.0	4.1	94.1
	12	1,320	1,711.1	1.30	83.7	4.6	88.3
180 to 325	ELL168	180	237.1	1.32	90.0	0.6	90.6