

University of Victoria

CLASSROOM UTILIZATION

2002/03



University of Victoria Classroom Utilization Report 2002/03

Prepared by: Alan R. Wilson
Ciel McGuire

Office of Institutional Planning & Analysis
<http://www.inst.uvic.ca>

November 22, 2002

Classroom Utilization
2002/03

Table of Contents

Introduction

Chart 1	—	Monday Room Utilization by Starting Time
Chart 2	—	Tuesday Room Utilization by Starting Time
Chart 3	—	Wednesday Room Utilization by Starting Time
Chart 4	—	Thursday Room Utilization by Starting Time
Chart 5	—	Friday Room Utilization by Starting Time
Chart 6	—	Saturday Room Utilization by Starting Time
Chart 7	—	Average Monday to Friday Room Utilization by Starting Time
Chart 8	—	Monday to Friday Seat Utilization for Scheduled Instruction by Starting Time
Chart 9	—	Average Monday to Friday Seat Utilization for Scheduled Instruction by Starting Time
Table 1	—	Monday to Friday Daytime Use by Seating Capacity
Chart 10	—	Average Monday to Friday Daytime Room Utilization by Seating Capacity
Chart 11	—	Average Monday to Friday Evening Room Utilization by Seating Capacity
Chart 12	—	Average Monday to Friday Seat Utilization for Scheduled Instruction by Room Capacity
Table 2	—	Monday to Friday Daytime Use by Building
Chart 13	—	Average Monday to Friday Daytime Room Utilization by Building
Chart 14	—	Average Monday to Friday Evening Room Utilization by Building
Chart 15	—	Average Monday to Friday Seat Utilization for Scheduled Instruction by Building
Table 3	—	Historical Monday to Friday Percentage Utilization Summary
APPENDIX	—	2002/03 Classroom Inventory

Introduction

Classroom Utilization 2002/03

Methodology

This report displays the level of classroom use as of October 2002. Two components are identified: scheduled instruction and bookings. Scheduled instruction consists of regular classroom instruction and includes lectures, tutorials, some discussion groups, and labs offered in classrooms. Bookings consist of more casual classroom use, such as staff and department meetings, club usage, and conferences. No bookings are included with scheduled instruction data. However, some usage included with the bookings is actually composed of tutorials and other sections associated with regular courses. This activity can appear here due to limitations in the university course database, which cannot handle courses that meet in one room for a part of a term and then move, in that term, to another room. The system also cannot handle some short-term immersion-type courses that meet throughout the day.

Room use is divided into two time periods: daytime (8:30 a.m. – 4:30 p.m.) and evening (4:30 p.m. – 10:00 p.m.). Note that a room in use from 5:30 p.m. – 6:30 p.m. will fill the 5:30 – 6:00 time slot and half the 6:00 – 7:00 time slot. A 70% daytime room use rate is considered by many as a reasonable target. Hence a line at 70% appears on all charts that tabulate room usage. For seat use, 50% is considered a reasonable target. Hence a line at 50% appears on all charts that tabulate seat usage. Note, however, that seat usage for bookings data is not maintained. This means that all seat-use results will be for scheduled instruction only.

Results

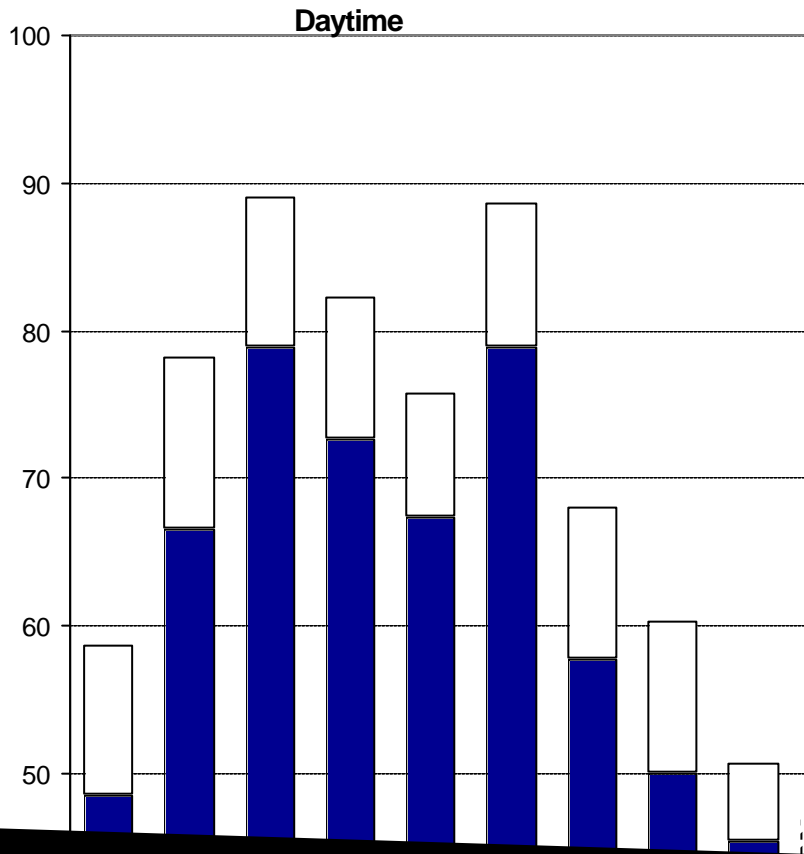
Charts 1 – 6 give daily room utilization for both scheduled instruction and bookings. Thursday is the busiest day of the week, with room use at more than 50% from 8:30 a.m. until 5:00 p.m. From 10:30 a.m. to 11:30 a.m., over 90% of the rooms are in use. As always, room usage drops noticeably on Friday, particularly after 2:30 p.m. Charts 8 and 9 detail seat use for scheduled instruction and show a similar pattern to room usage.

Tables 1 and Charts 10 – 12 examine utilization by room-size category. Larger rooms are, on the whole, used more frequently than smaller ones. Table 2 and Charts 13 – 15 examine utilization by building. The most heavily used buildings are H&SD, Clearihue, and Cunningham, with over 75% daytime usage. The least-used classrooms continue to be in the Fraser building, although daytime room usage there has increased to 57.5% from 49.2% in October 2001. Table 3 summarizes historical classroom use. Although current room usage is lower than in the 1990s, current seat usage for scheduled instruction is about the same, due, in part, to the greater average capacity of the classrooms. The appendix details use by individual classroom.

Chart 1

University of Victoria

Monday Room Utilization by Start



\$

%

Chart 2
University of Victoria
Tuesday Room Utilization by Starting Time

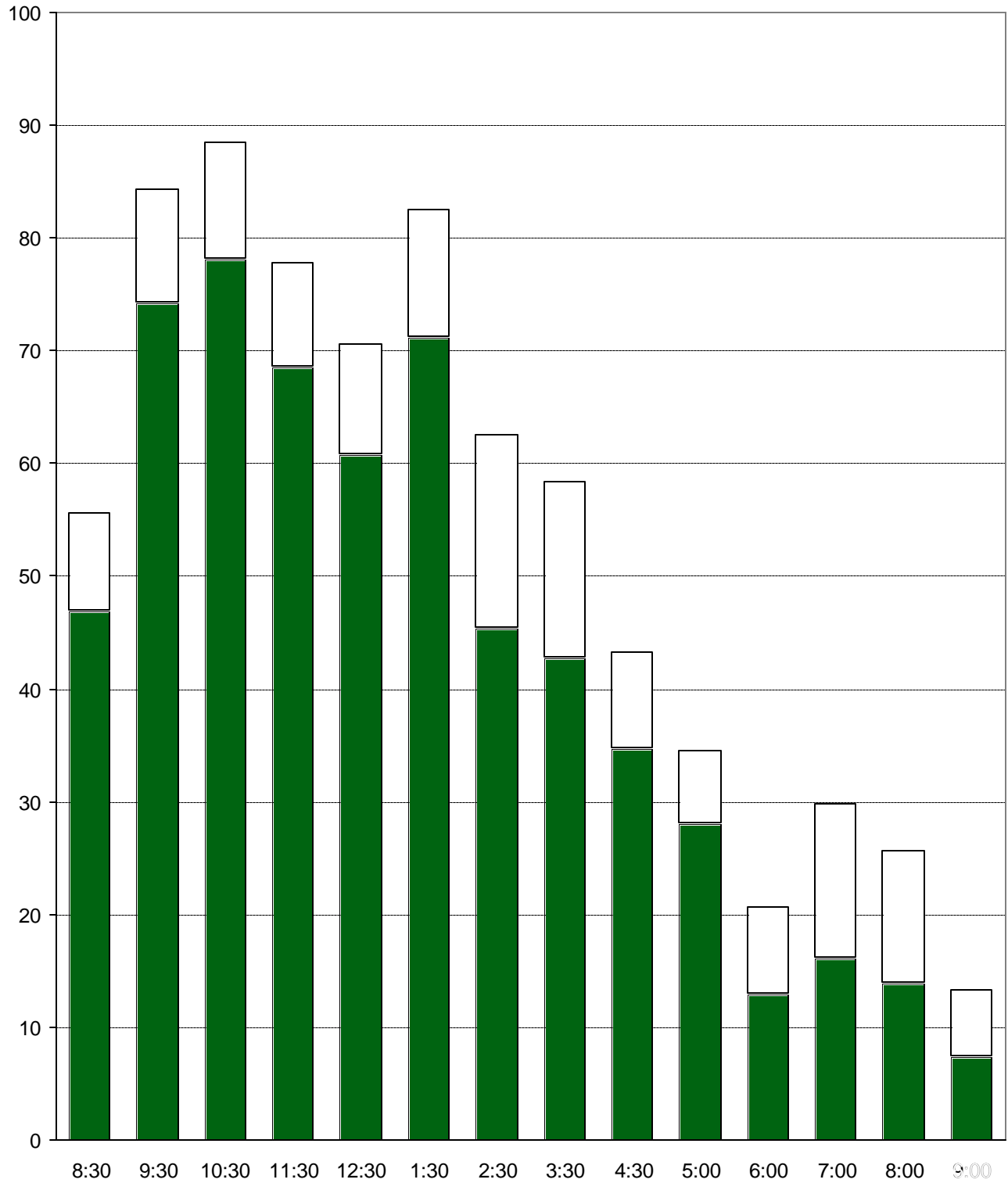


Chart 6

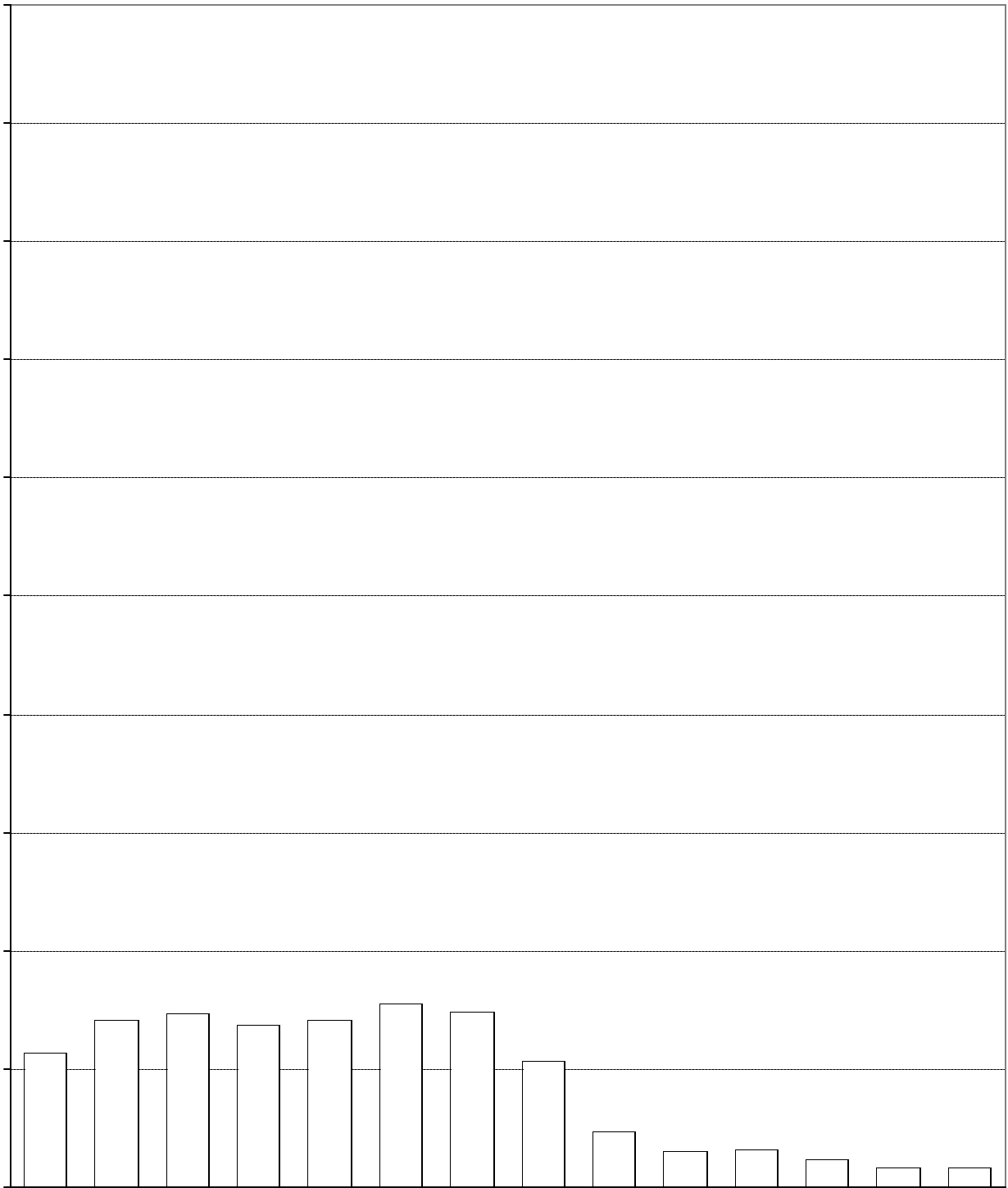


Chart 7

University of Victoria

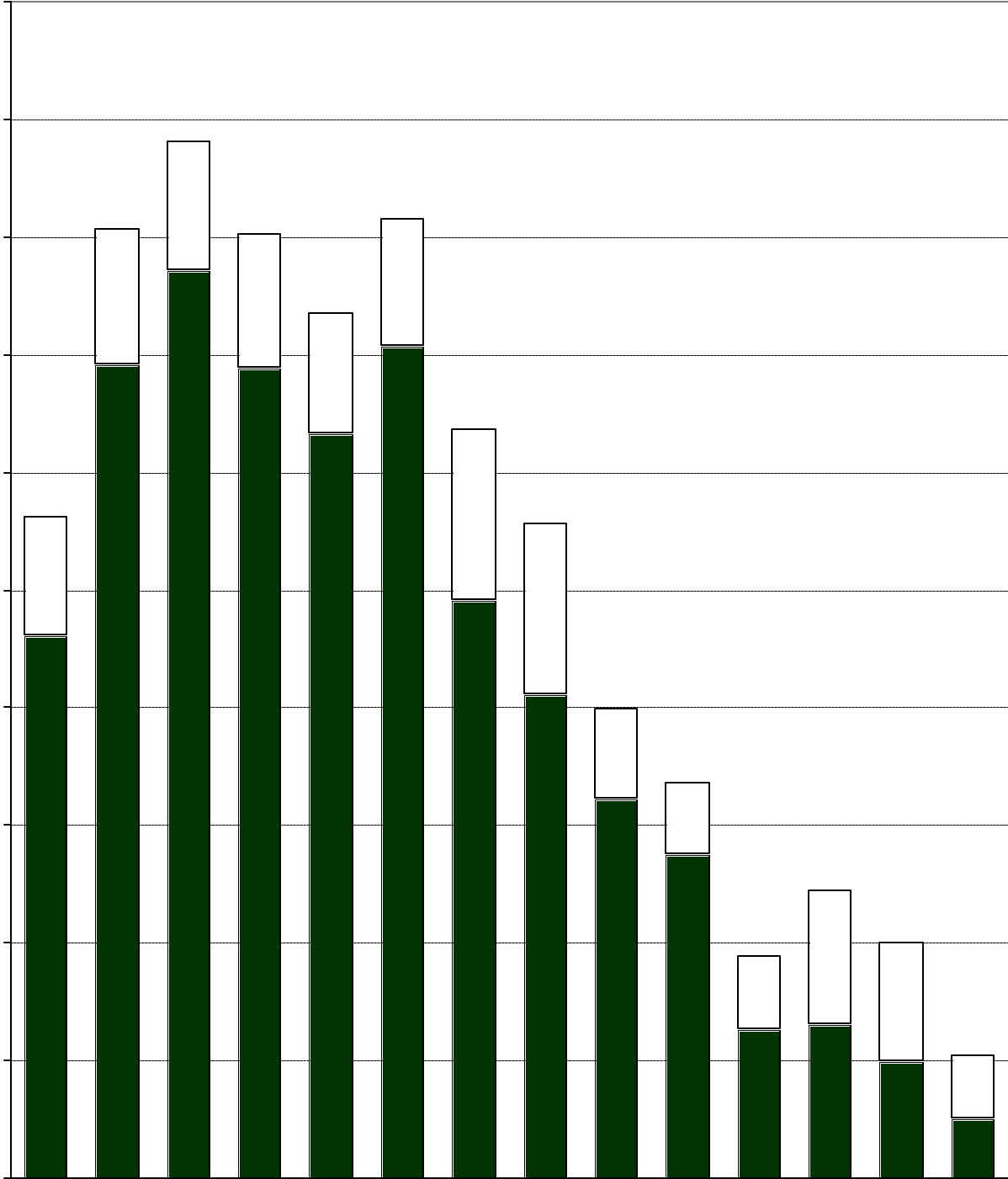
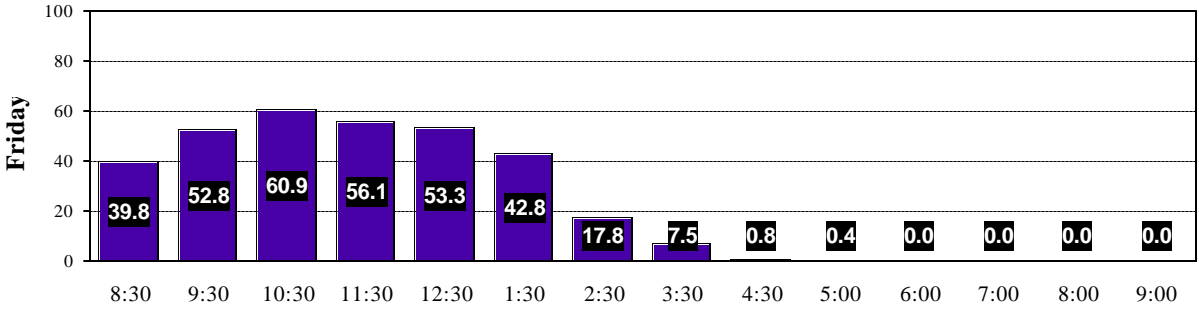
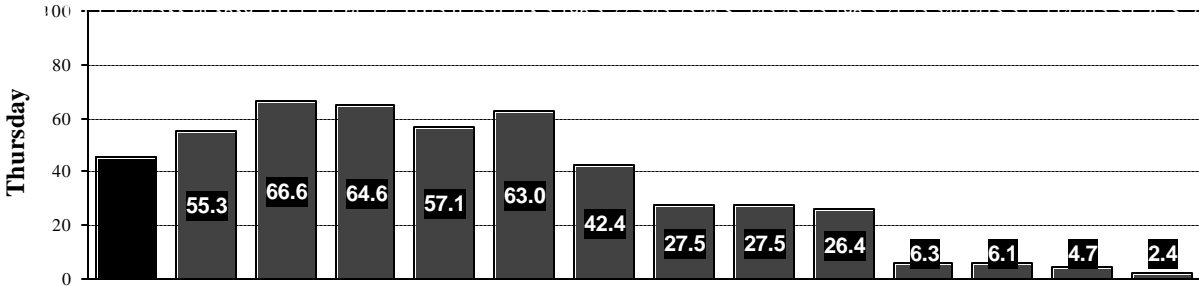
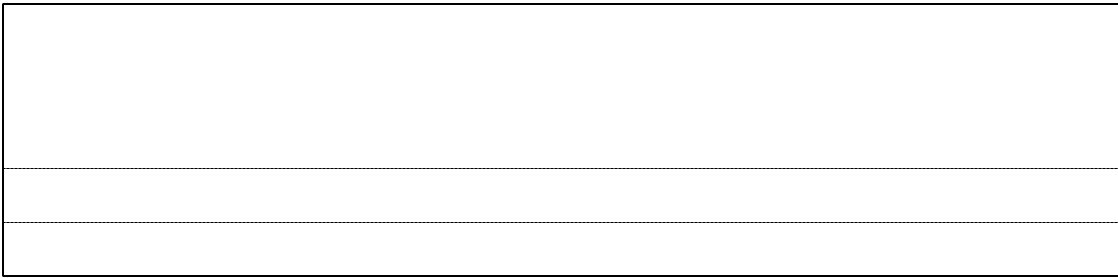


Chart 8
University of Victoria
Monday to Friday Seat Utilization
for Scheduled Instruction by Starting Time



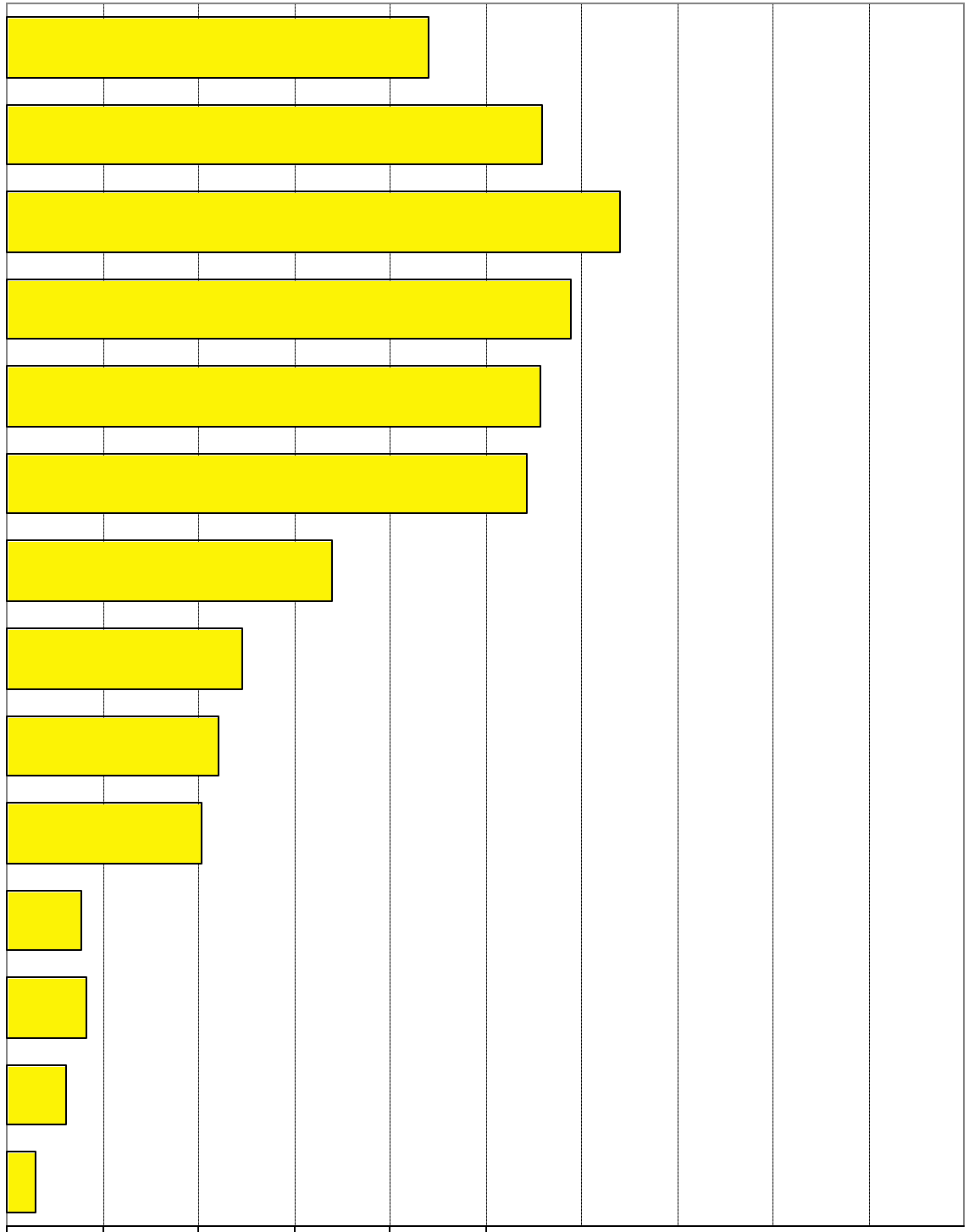


Table 1
2002/03 Monday to Friday Daytime Use by Seating Capacity

Seating Capacity	No. of Rooms	No. of Seats	Area in Sq. M.	Sq. M. per Seat	% Sched. Instr. Seat Use	% Sched. Instr. Seat Use	% Bookings Room Use	% Total Room Use
12-25	31	595	1,132	1.9	26.9	43.5	28.9	72.4
26-39	32	1,042	1,794	1.7	45.0	60.7	7.8	68.5
40-49	17	736	1,240	1.7	43.2	62.9	9.2	72.1
50-69	23	1,372	2,127	1.6	46.5	67.1	5.1	72.2
70-89	11	806	994	1.2	47.3	62.8	6.6	69.4
90-179	11	1,215	1,499	1.2	57.2	77.6	3.0	80.6
180-325	5	1,237	1,427	1.2	62.0	87.3	2.6	89.9
University Totals	130	7,003	10,213	1.5	49.0	60.6	11.8	72.4

Chart 10
University of Victoria

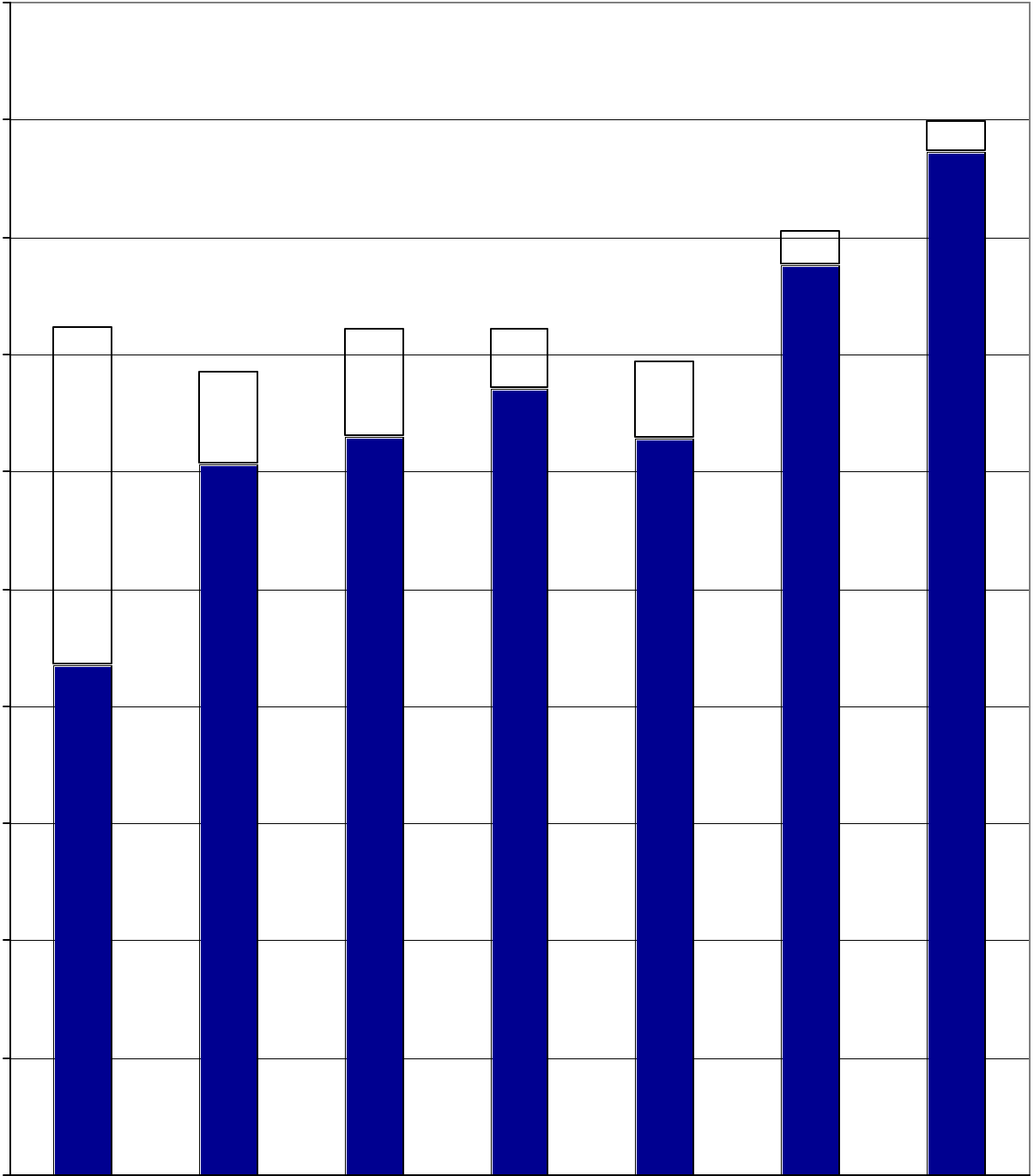


Table 2
2002/03 Monday to Friday Daytime Use by Building

Building	No. of Rooms	No. of Seats	Area in Sq. M.	Sq. M. per Seat	% Sched. Instr. Seat Use	% Sched. Instr. Room Use	% Bookings Room Use	% Total Room Use
H & SD (HSD)	4	238	357	1.5	53.5	55.0	24.4	79.4
Clearihue (CLE)	46	1,649	2,408	1.5	53.2	62.6	16.3	78.9
Innovative Teaching (CIT)	4	355	536	1.5	47.8	62.5	12.7	75.2
Cunningham (CUN)	1	58	77	1.3	33.4	62.5	12.6	75.1
Elliott (ELL)	9	703	924	1.3	53.5	69.6	4.6	74.2
Strong (DSB)	13	748	1,185	1.6	56.8	66.3	7.5	73.8
Cornett (COR)	20	1,209	1,627	1.3	48.6	60.3	9.5	69.8
Fine Arts (FIA)	3	103	180	1.7	44.3	62.5	6.2	68.7
McKinnon (McK)	2	139	198	1.4	33.9	61.3	5.8	67.1
Business & Economics (BEC)	1	30	68	2.3	30.4	55.0	11.7	66.7
MacLaurin (MAC)	20	1,178	1,653	1.4	42.6	53.1	10.4	63.5
Fraser (FRA)	7	593	1,000	1.7	40.5	50.7	6.8	57.5
University Totals	130	7,003	10,213	1.5	49.0	60.6	11.8	72.4

Chart 13
University of Victoria
Average Monday to Friday Daytime Room Utilization
by Building

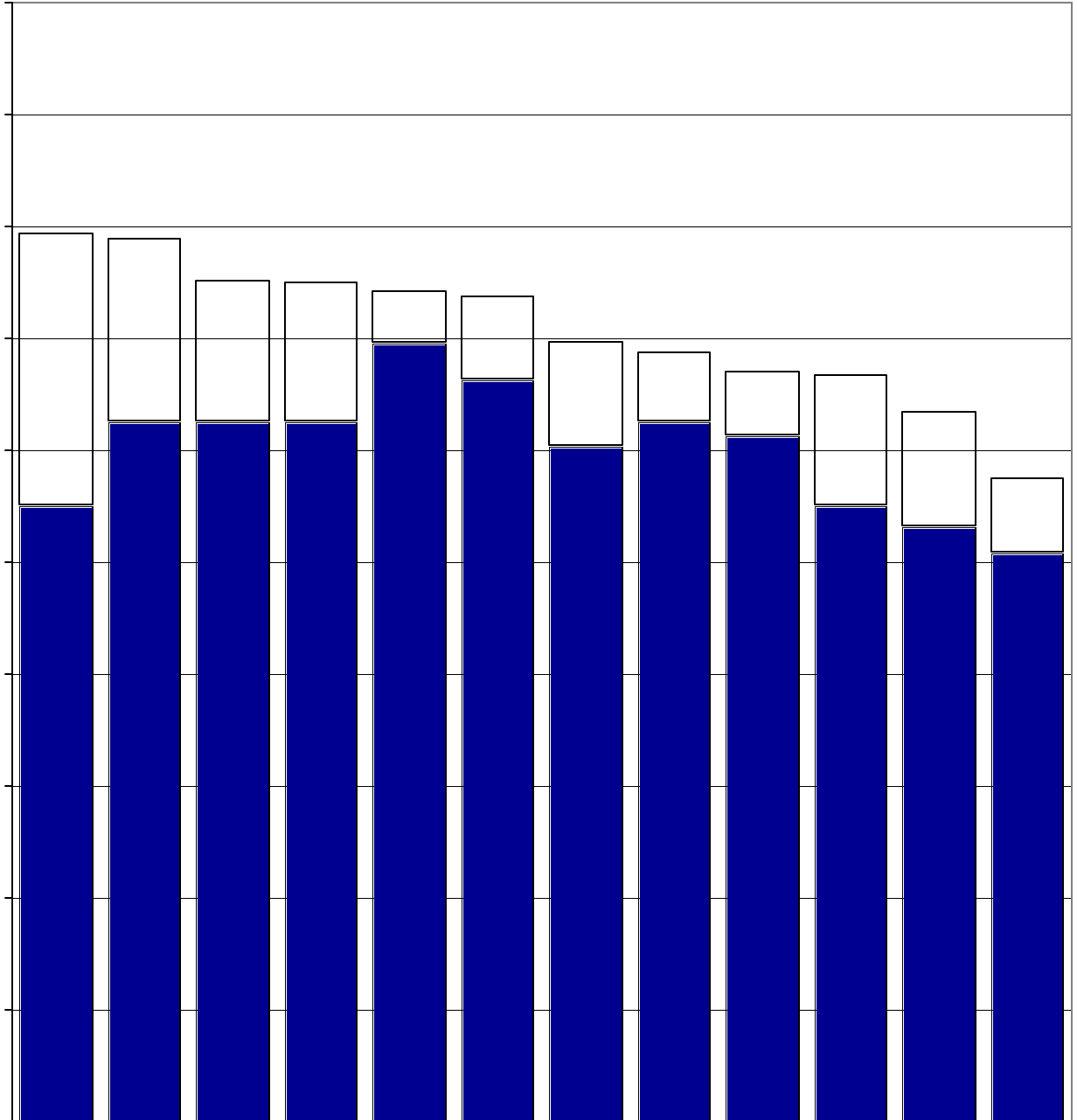


Chart 14
University of Victoria
Average Monday to Friday Evening Room Utilization
by Building

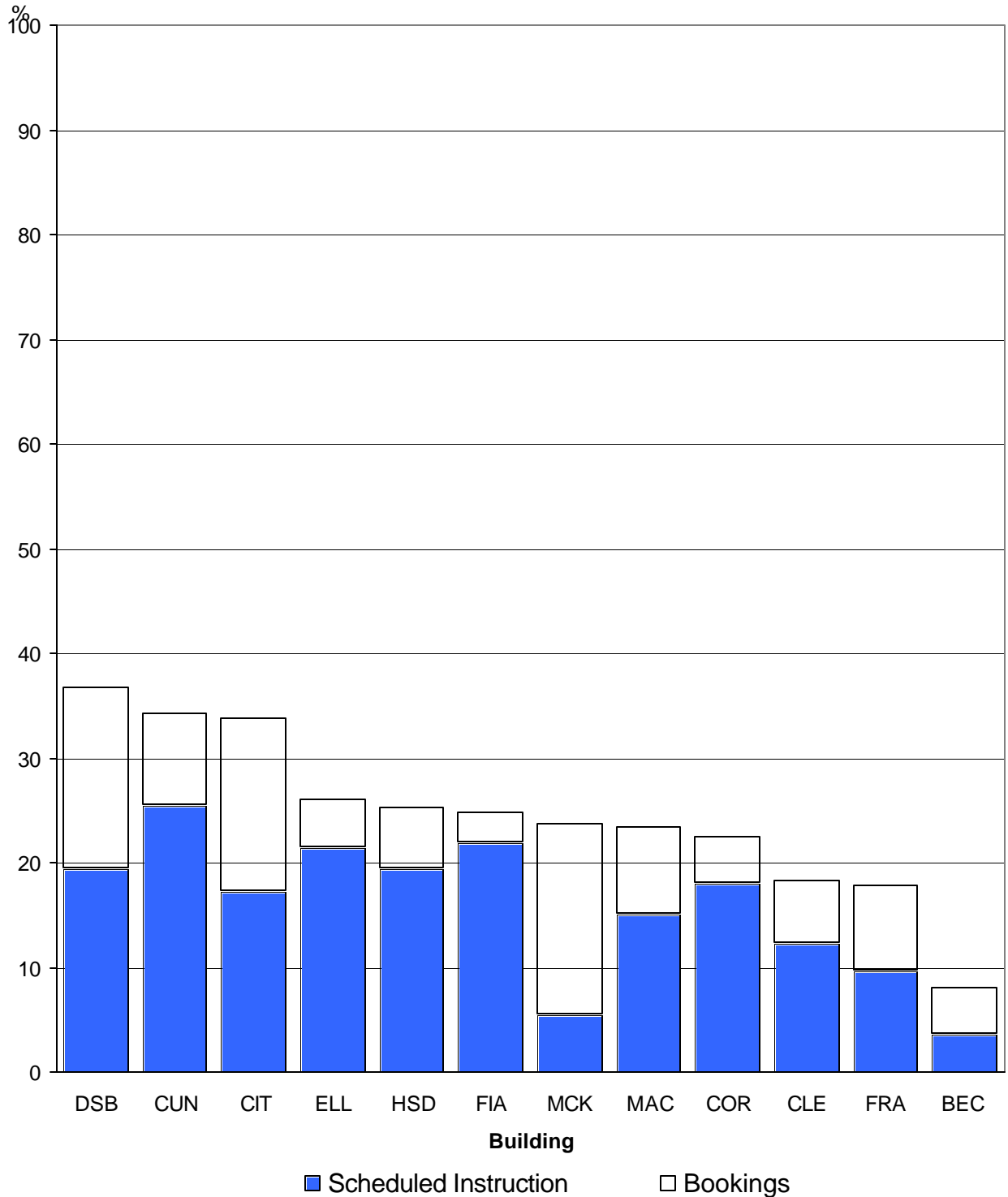


Chart 15
University of Victoria
Average Monday to Friday Seat Utilization
for Scheduled Instruction by Building

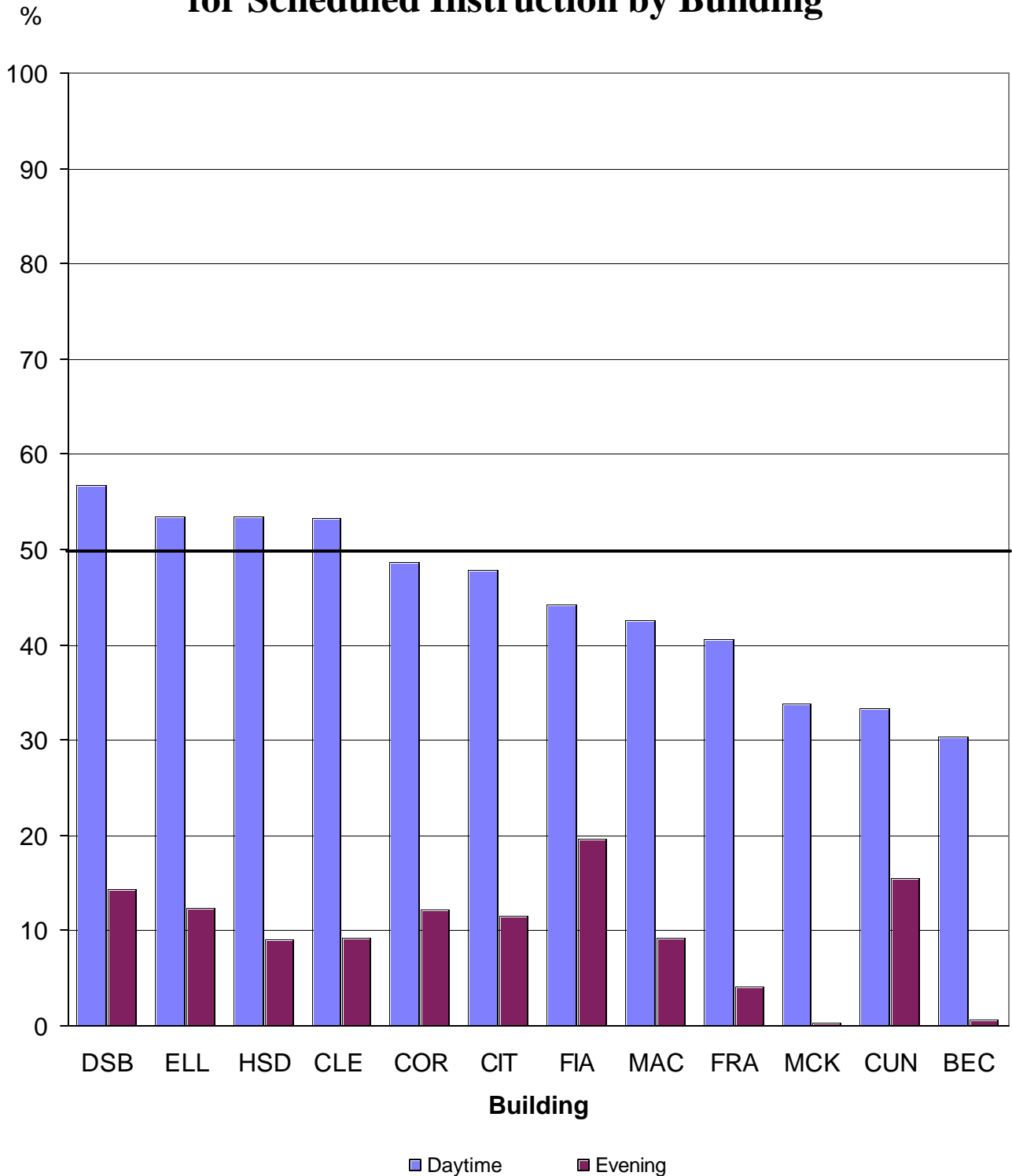


Table 3

APPENDIX
2002/03 Classroom Inventory

Room Size Interval	Room	No. of Seats	Area in Sq. M.	Sq. M. per Seat	Sched. Instr. % Day Use	Bookings % Day Use	Total % Day Use
12 to 25	CLEB346	12	24.3	2.03	40.0	5.2	45.2
	CLEC116	12	22.1	1.84	40.0	8.1	48.1
	CLEC118	12	22.1	1.84	62.5	7.4	69.9
	CLEB446	14	24.3	1.74	27.5	18.0	45.5
	CLED261	14	25.7	1.84	48.7	18.0	66.7
	CORA132	14	27.5	1.96	41.2	12.5	53.7
	CLEC214	16	26.5	1.66	53.7	16.1	69.8
	CLED123	18	32.4	1.80	0.0	100.0	100.0
	CLED127	18	31.2	1.73	0.0	100.0	100.0
	CLED129	18	31.6	1.76	0.0	100.0	100.0
	CLED133	18	32.2	1.79	0.0	100.0	100.0
	CORA372	18	37.7	2.09	35.0	23.4	58.4
	CORB130	18	37.3	2.07	30.0	25.5	55.5
	MACD117	18	31.2	1.73	42.5	1.4	43.9
	CLEB215	20	37.6	1.88	57.5	11.7	69.2
	CLEB315	20	39.1	1.96	60.0	17.3	77.3
	CLEB415	20	37.4	1.87	82.5	7.5	90.0
	CLEC316	20	37.5	1.88	57.5	8.3	65.8
	CORA339	20	33.5	1.68	42.5	35.7	78.2
	DSBC114	20	44.9	2.25	45.0	36.8	81.8
	DSBC124	20	44.9	2.25	46.2	11.5	57.7
	FIA209	20	44.0	2.20	52.5	12.3	64.8
	ELL164	22	42.4	1.93	85.0	1.1	86.1
	CLED124	24	41.1	1.71	0.0	100.0	100.0
	CLED128	24	40.8	1.70	78.7	5.2	83.9
	CLED130	24	34.8	1.45	77.5	7.6	85.1
	CLED134	24	40.5	1.69	62.5	8.3	70.8
	ELL161	24	41.9	1.75	65.0	6.7	71.7
	HSDA250	24	52.3	2.18	18.7	61.4	80.1
	MACD281	24	54.7	2.28	45.0	4.9	49.9
	CIT 120	25	58.7	2.26	50.0	21.4	71.4
	31	595	1,132.2	1.90	43.5	28.9	72.4
26 to 39	FRA204	27	67.8	2.51	47.5	4.0	51.5
	FRA205	27	67.7	2.51	15.0	8.9	23.9
	CLEC111	28	35.7	1.28	77.5	3.4	80.9
	CLEC113	28	38.4	1.37	67.5	11.0	78.5
	CLEC115	28	54.8	1.96	78.7	3.2	81.9
	BEC 363	30	68.2	2.27	55.0	11.6	66.6
	CLEB020	30	43.8	1.46	37.5	11.6	51.56.7

APPENDIX
2002/03 Classroom Inventory

Room Size Room No. of

APPENDIX
2002/03 Classroom Inventory

Room Size Interval	Room	No. of Seats	Area in Sq. M.	Sq. M. per Seat	Sched. Instr. % Day Use	Bookings % Day Use	Total % Day Use
	DSBC112	60	93.8	1.56	87.5	0.1	87.6
	FRA152	60	134.9	2.25	57.5	2.2	59.7
	MACA169	60	82.0	1.37	57.5	3.1	60.6
	CLEA301	62	74.7	1.20	95.0	0.4	95.4
	CORA229	62	79.6	1.28	90.0	0.0	90.0
	CLEA309	63	88.4	1.40	77.5	5.0	82.5
	DSBC116	63	128.7	2.04	67.5	5.1	72.6
	CLEA303	64	73.4	1.15	62.5	7.0	69.5
	CORA129	65	79.6	1.22	70.0	3.2	73.2
	FRA158	65	168.9	2.60	57.5	7.0	64.5
	ELL060	68	86.7	1.28	60.0	4.2	64.2
	ELL061	68	86.1	1.27	37.5	11.3	48.8
	CLEA201	69	87.5	1.27	61.2	7.4	68.6
	23	1,372	2,127.2	1.55	67.1	5.1	72.2
70 to 89	CORA125	70	82.9	1.18	47.5	9.6	57.1
	CORA225	70	82.9	1.18	22.5	9.6	32.1
	MACD110	70	86.8	1.24	72.5	2.4	74.9
	MACD116	70	86.3	1.23	65.0	7.0	72.0
	DSBC122	72	128.8	1.79	80.0	0.7	80.7
	CLEA307	74	88.0	1.19	82.5	1.1	83.6
	CLEA311	74	89.8	1.21	72.5	1.3	73.8
	DSBC118	74	88.0	1.19	90.0	2.7	92.7
	CIT 110	75	52.7	0.70	30.0	21.7	51.7
	CLEC112	77	115.7	1.50	72.5	4.7	77.2
	ELL062	80	91.9	1.15	56.2	11.3	67.5
	11	806	993.8	1.23	62.8	6.6	69.4
90 to 179	CORA121	90	109.1	1.21	72.5	1.7	74.2
	CLEA207	92	129.7	1.41	95.0	0.0	95.0
	CORA120	94	103.0	1.10	70.0	5.1	75.1
	CORB143	96	117.1	1.22	67.5	7.3	74.8
	MCK150	107	137.2	1.28	75.0	1.9	76.9
	CORA221	108	109.1	1.01	82.5	4.9	87.4
	CORB108	108	133.4	1.24	72.5	2.4	74.9
	CORB112	108	132.8	1.23	82.5	0.7	83.2
	MACD288	110	147.4	1.34	61.2	7.2	68.4
	ELL167	148	198.1	1.34	85.0	0.3	85.3
	HSDA240	154	182.1	1.18	90.0	0.7	90.7
	11	1,215	1,499.0	1.23	77.6	3.0	80.6
180 to 325	ELL168	180	237.1	1.32	97.5	0.0	97.5
	DSBC103	200	202.6	1.01	97.5	0.4	97.9
	CIT 105	215	308.4	1.43	87.5	0.1	87.6
	MACA144	317	334.5	1.06	87.5	8.8	96.3
	FRA159	325	344.0	1.06	66.2	3.5	69.7
	5	1,237	1,426.6	1.15	87.3	2.6	89.9
Totals	130	7,003	10,212.9	1.46	60.6	11.8	72.4