

University of Victoria

CLASSROOM UTILIZATION

2004-2005

11:00 AM - 12:00 PM

Seat Use: 56.7%

Room Use: 71.4%

11:00 AM

***University Of Victoria
Classroom Utilization
2001/02***

***Prepared by: Alan R. Wilson
Ciel McGuire***

Our Web Home Page is <http://www.inst.uvic.ca>

***Institutional Planning & Analysis
June 24, 2002***

Classroom Utilization

2001/02

Table of Contents

Introduction

Chart 1	—	Monday Room Utilization by Starting Time
Chart 2	—	Tuesday Room Utilization by Starting Time
Chart 3	—	Wednesday Room Utilization by Starting Time
Chart 4	—	Thursday Room Utilization by Starting Time
Chart 5	—	Friday Room Utilization by Starting Time
Chart 6	—	Saturday Room Utilization by Starting Time
Chart 7	—	Average Monday to Friday Room Utilization by Starting Time
Chart 8	—	Monday to Friday Daytime Seat Utilization for Scheduled Instruction by Starting Time
Chart 9	—	Average Monday to Friday Seat Utilization for Scheduled Instruction by Starting Time
Table 1	—	Monday to Friday Daytime Use by Seating Capacity
Chart 10	—	Average Monday to Friday Daytime Room Utilization by Seating Capacity
Chart 11	—	Average Monday to Friday Evening Room Utilization by Seating Capacity
Chart 12	—	Average Monday to Friday Seat Utilization for Scheduled Instruction by Room Capacity
Table 2	—	Monday to Friday Daytime Use by Building
Chart 13	—	Average Monday to Friday Daytime Room Utilization by Building
Chart 14	—	Average Monday to Friday Evening Room Utilization by Building
Chart 15	—	Average Monday to Friday Seat Utilization for Scheduled Instruction by Building
Table 3	—	Historical Monday to Friday Percentage Utilization Summary
APPENDIX	—	2001/02 Classroom Inventory

Introduction
Classroom Utilization 2001/02

Methodology

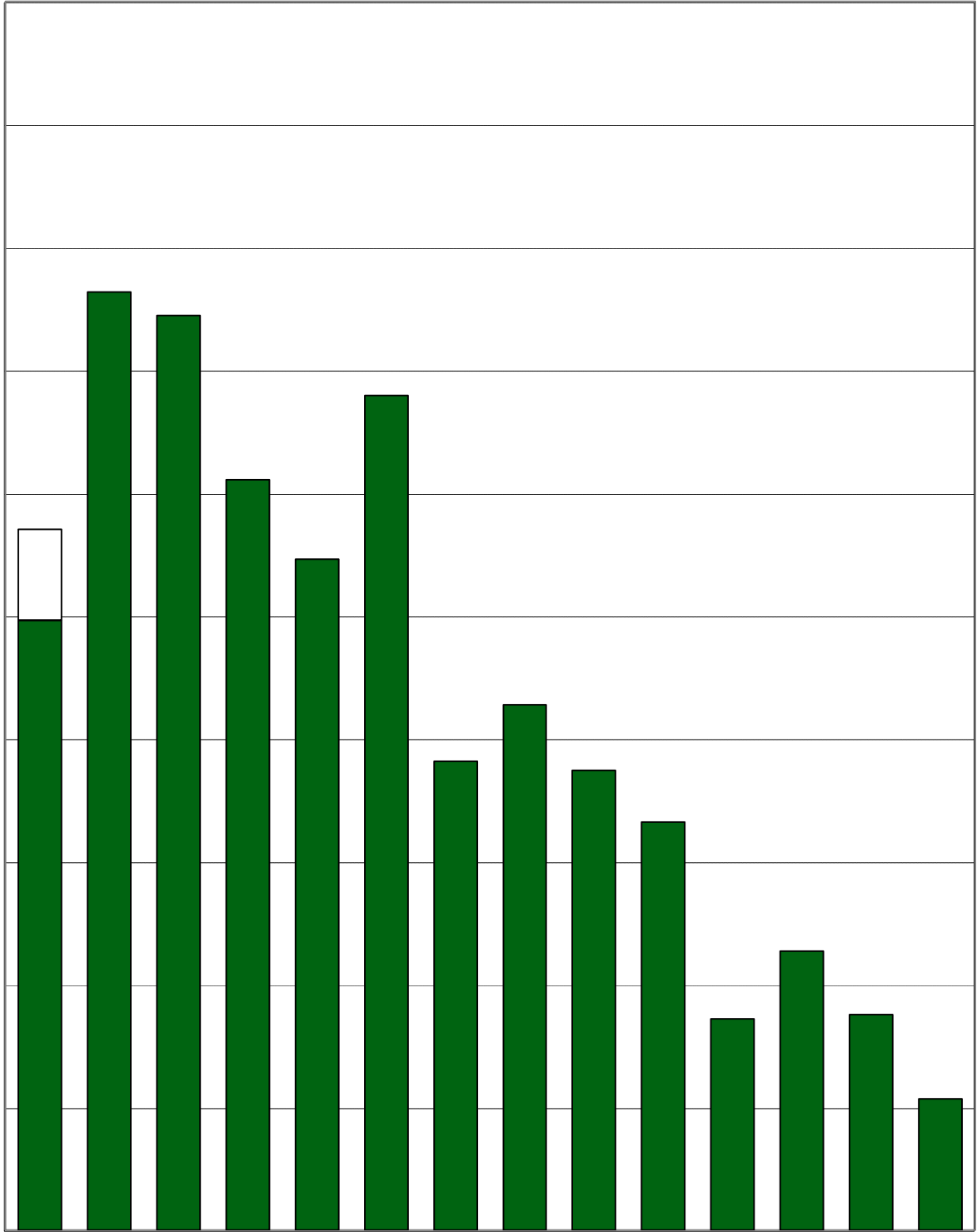


Chart 3
University of Victoria
Wednesday Room Utilization by Starting Time

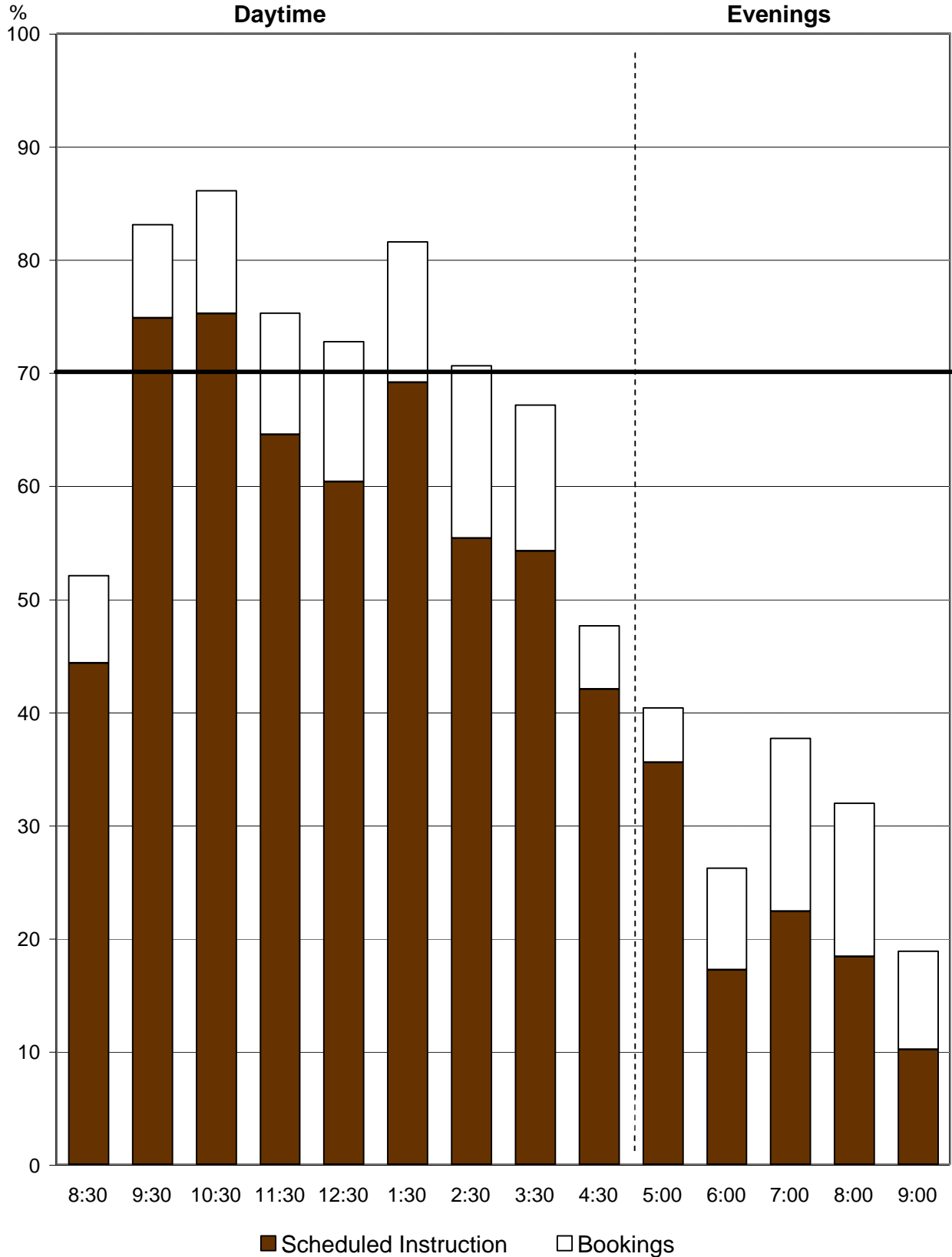


Chart 4
University of Victoria
Thursday Room Utilization by Starting Time

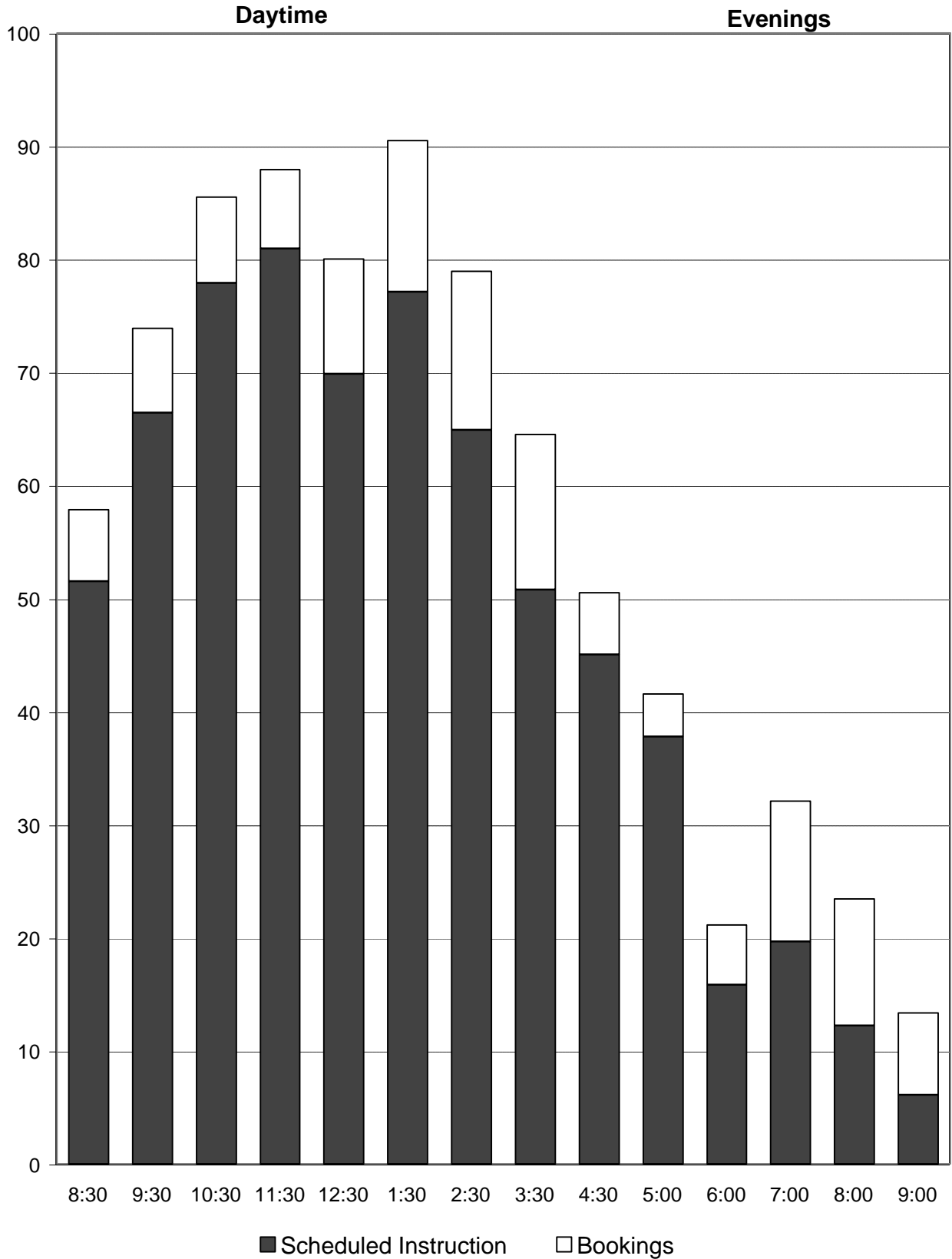
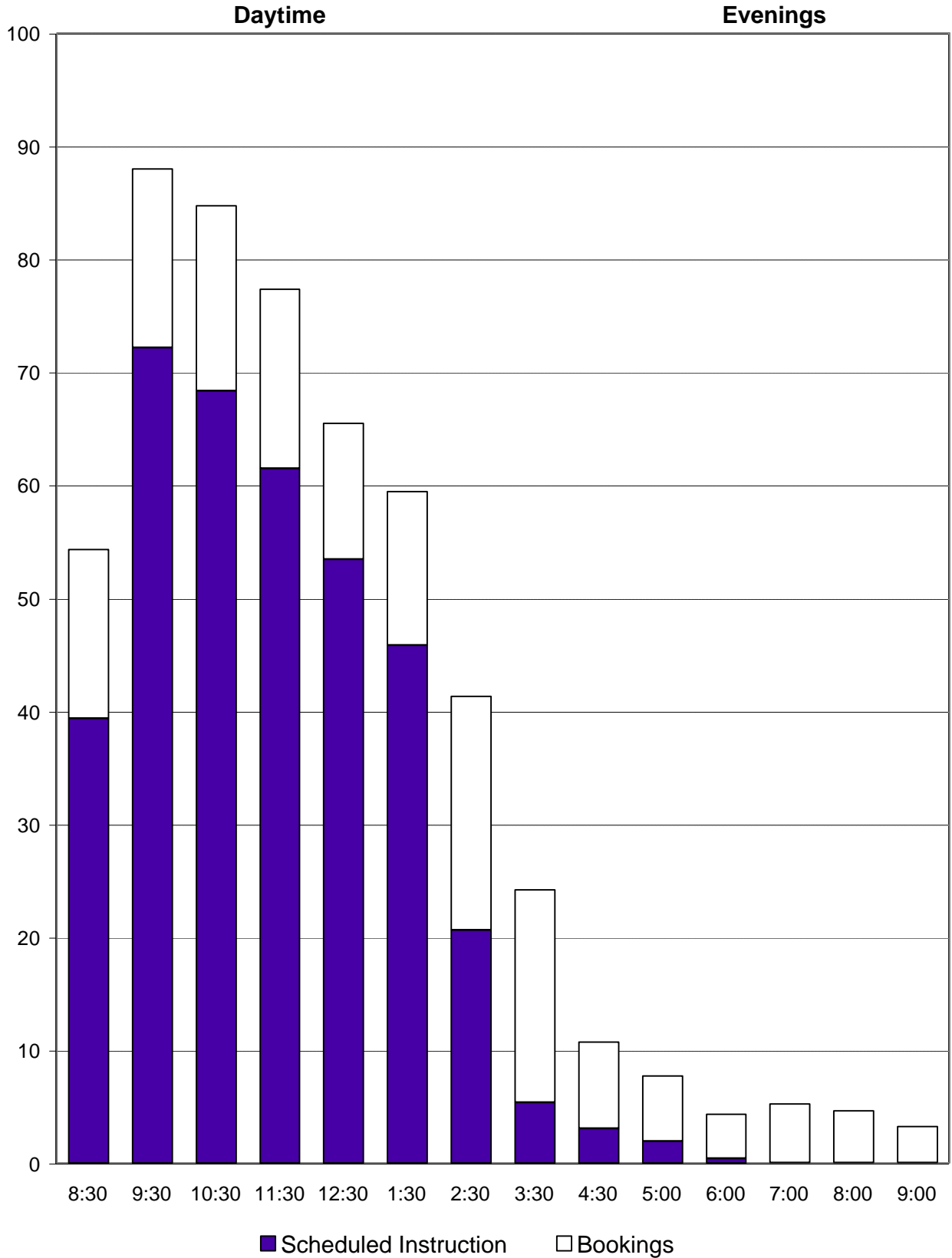


Chart 5
University of Victoria
Friday Room Utilization by Starting Time



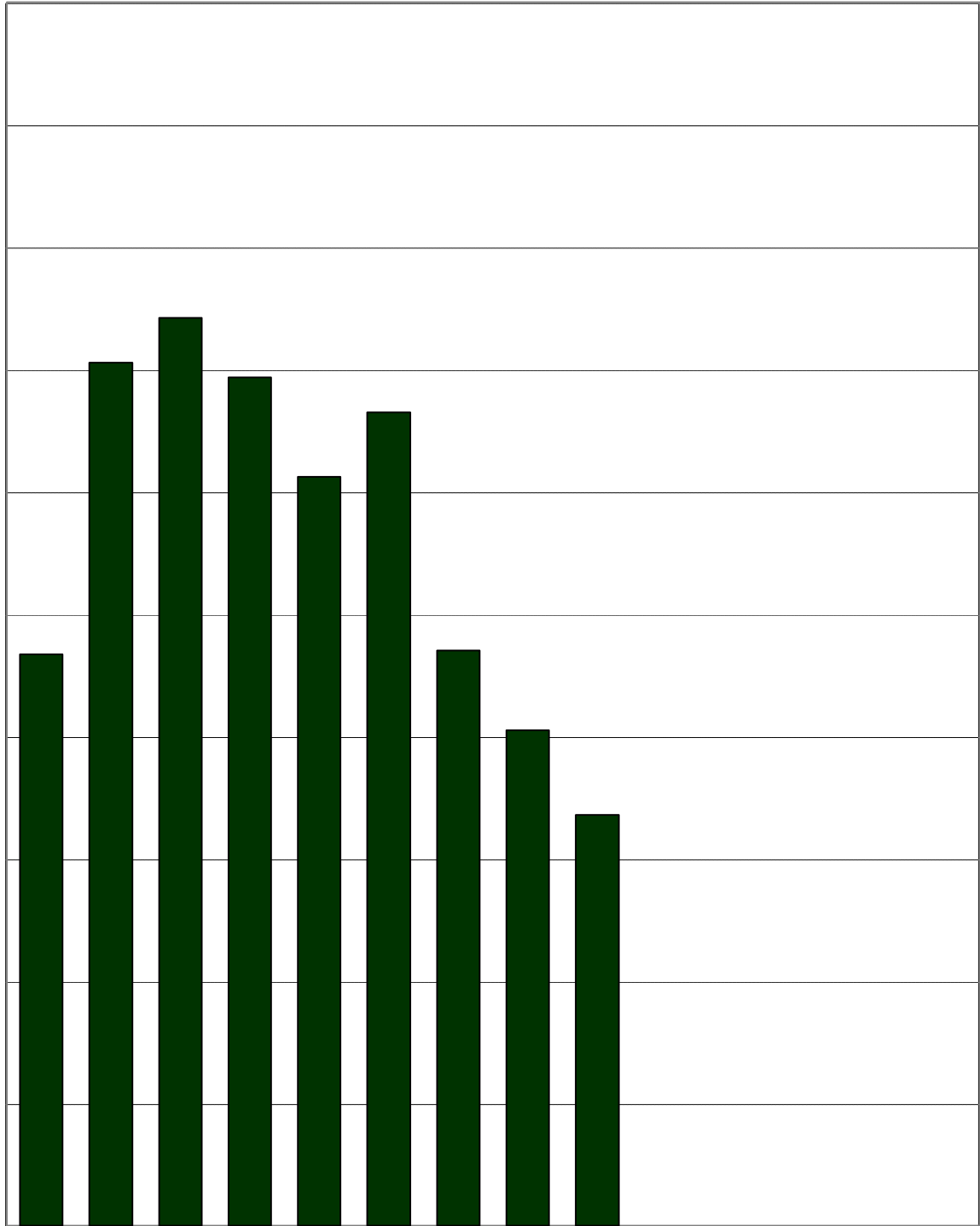


Chart 8
University of Victoria
Monday to Friday Seat Utilization
for Scheduled Instruction by Starting Time

--	--	--	--	--	--	--	--	--	--

Table 1
2001/02 Monday to Friday Daytime Use by Seating Capacity

Seating Capacity	No. of Rooms	No. of Seats	Area in Sq. M.	Sq. M. per Seat	% Sched. Instr. Seat Use	% Sched Instr Room Use	% Bookings Room Use	% Total Room Use
10-25	31	586	1,149	2.0	24.2	38.4	27.0	65.4
26-39	33	1,068	1,853	1.7	44.1	59.2	7.5	66.7
40-49	17	736	1,240	1.7	46.1	64.9	8.1	73.0
50-69	22	1,309	1,999	1.5	43.3	62.2	6.8	69.0
70-89	12	880	1,123	1.3	51.4	68.9	10.1	79.0
90-179	11	1,215	1,499	1.2	65.6	84.8	3.5	88.3
180-325	5	1,243	1,427	1.1	64.3	83.8	4.1	87.9
University Totals	131	7,037	10,288	1.5	50.7	59.5	11.9	71.4

Source: Scheduling data from October 2001 Student and Bookings Databases.

Chart 11
University of Victoria
Average Monday to Friday Evening Room Utilization
by Seating Capacity

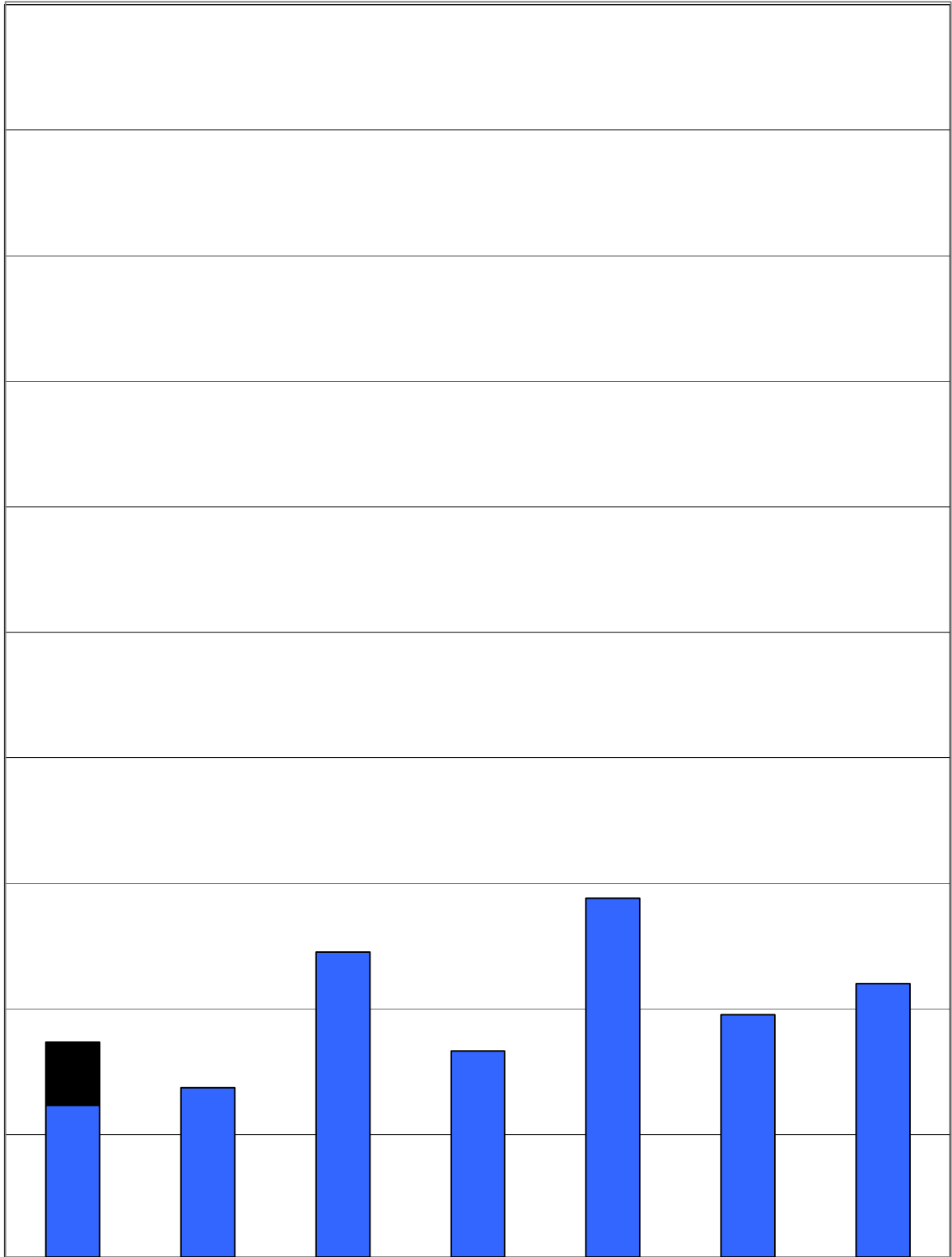


Chart 12
University of Victoria
Average Monday to Friday Seat Utilization
for Scheduled Instruction by Room Capacity

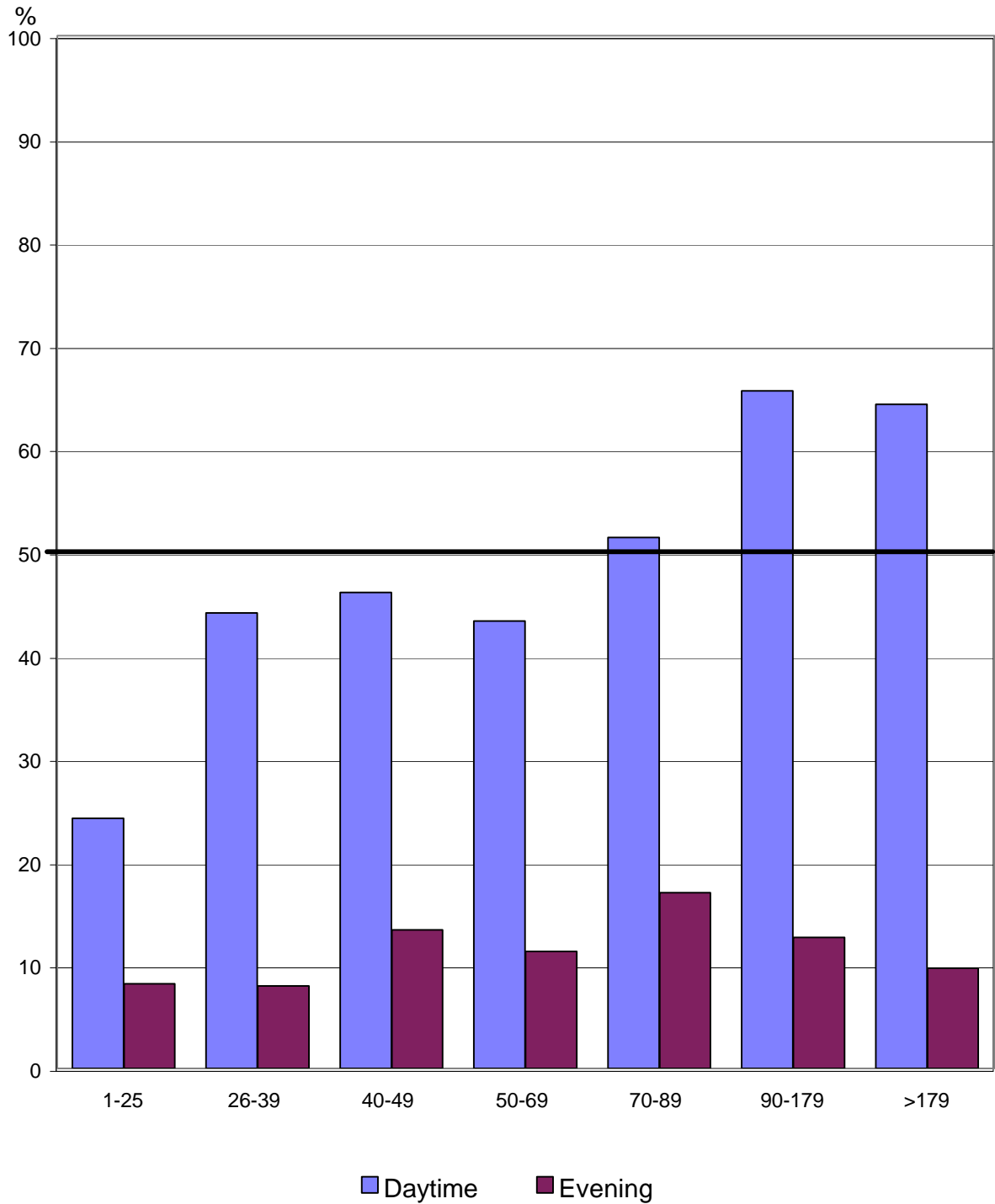
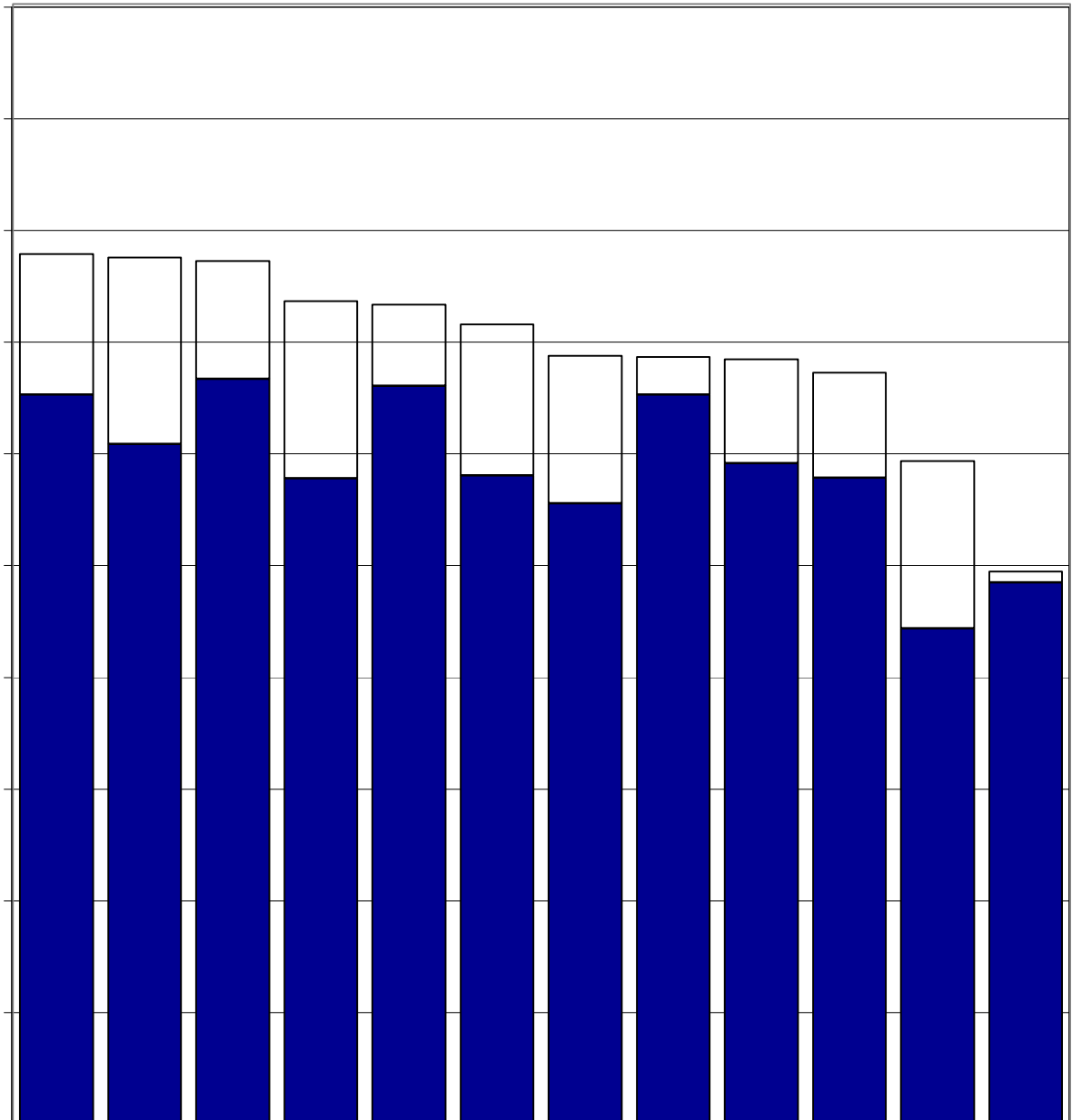


Table 2
2001/02 Monday to Friday Daytime Use by Building

Building	No. of Rooms	No. of	Area in	Sq. M.	% Sched.	% Sched.	% Bookings	% Total
-----------------	-------------------------	---------------	----------------	---------------	-----------------	-----------------	-------------------	----------------

Chart 13
University of Victoria



10

%

Chart 15
University of Victoria
Average Monday to Friday Seat Utilization
for Scheduled Instruction by Building

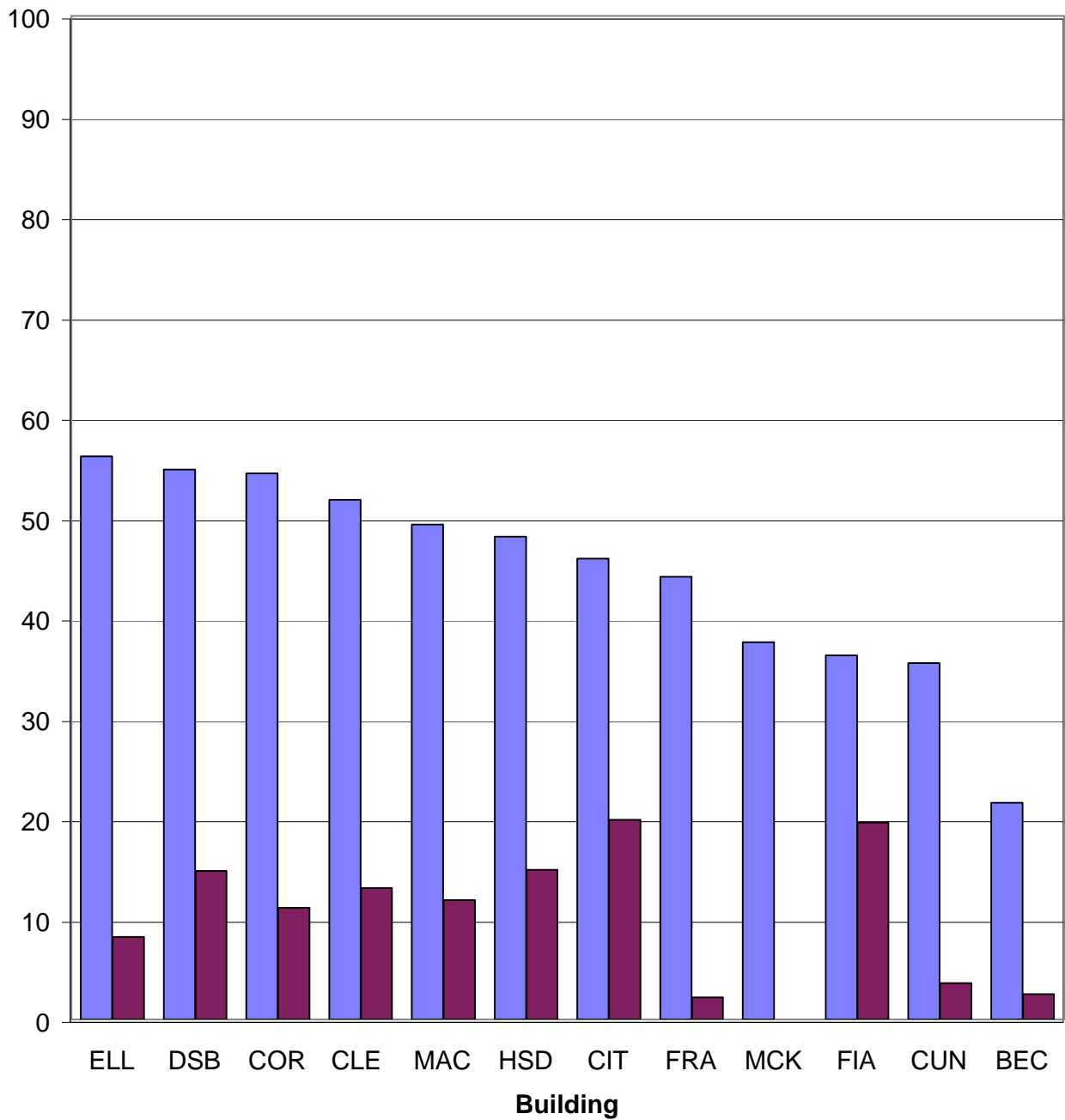


Table 3

APPENDIX
2001/02 Classroom Inventory

Room Size Interval	Room	No. of Seats	Area in Sq. M.	Sq. M. per Seat	Sched. Instr. % Day Use	Bookings % Day Use	Total % Day Use
10 to 25	CLEB346	12	24.3	2.03	38.7	12.0	50.7
	CLEC116	12	22.1	1.84	55.0	8.4	63.4
	CLEC118	12	22.1	1.84	72.5	3.5	76.0
	CLEB446	14	24.3	1.74	20.0	22.2	42.2
	CLED261	14	25.7	1.84	52.5	7.2	59.7
	CORA132	14	27.5	1.96	27.5	23.6	51.1
	CLEC214	16	26.5	1.66	50.0	8.6	58.6
	FIA108	16	75.4	4.71	0.0	22.7	22.7
	CLED123	18	32.4	1.80	0.0	100.0	100.0
	CLED127	18	31.2	1.73	0.0	100.0	100.0
	CLED129	18	31.6	1.76	0.0	100.0	100.0
	CLED133	18	32.2	1.79	0.0	100.0	100.0
	CORA372	18	37.7				

APPENDIX
2001/02 Classroom Inventory

Room Size Interval	Room	No. of Seats	Area in Sq. M.	Sq. M.	Sched. Instr.	Bookings	Total
-------------------------------	-------------	-------------------------	---------------------------	---------------	----------------------	-----------------	--------------

APPENDIX
2001/02 Classroom Inventory

Room Size Interval	Room	No. of Seats	Area in Sq. M.	Sq. M. per Seat	Sched. Instr. % Day Use	Bookings % Day Use	Total % Day Use
	CLEA303	64	73.4	1.15	75.0	3.4	78.4
	CORA129	65	79.6	1.22	65.0	7.2	72.2
	FRA158	65	168.9	2.60	50.0	5.4	55.4
	ELL060	68	86.7	1.28	37.5	13.5	51.0
	ELL061	68	86.1	1.27	52.5	5.7	58.2
	CLEA201	69	87.5	1.27	73.7	6.9	80.6
	22	1,309.0	1,998.5	1.5	62.2	6.8	69.0
70 to 89	CORA125	70	82.9	1.18	55.0	7.4	62.4
	CORA225	70	82.9	1.18	60.0	7.6	67.6
	MACD110	70	86.8	1.24	82.5	5.4	87.9
	MACD116	70	86.3	1.23	76.2	6.5	82.7
	DSBC122	72	128.8	1.79	52.5	26.2	78.7
	DSBC116	73	128.7	1.76	70.0	20.6	90.6
	CLEA307	74	88.0	1.19	75.0	6.5	81.5
	CLEA311	74	89.8	1.21	82.5	0.6	83.1
	CIT 110	75	52.7	0.70	35.0	19.4	54.4
	DSBC118	75	88.0	1.17	90.0	3.3	93.3
	CLEC112	77	115.7	1.50	82.5	4.0	86.5
	ELL062	80	91.9	1.15	65.0	13.6	78.6
	12	880	1,122.5	1.3	68.9	10.1	79.0
90 to 179	CORA121	90	109.1	1.21	80.0	3.5	83.5
	CLEA207	92	129.7	1.41	82.5	2.2	84.7
	CORA120	94	103.0	1.10	80.0	1.5	81.5
	CORB143	96	117.1	1.22	85.0	2.9	87.9
	MCK150	107	137.2	1.28	82.5	0.9	83.4
	CORA221	108	109.1	1.01	85.0	6.7	91.7
	CORB108	108	133.4	1.24	80.0	2.9	82.9
	CORB112	108	132.8	1.23	90.0	1.3	91.3
	MACD288	110	147.4	1.34	95.0	3.7	98.7
	ELL167	148	198.1	1.34	97.5	0.9	98.4
	HSDA240	154	182.1	1.18	75.0	11.6	86.6
	11	1,215.0	1,499.0	1.2	84.8	3.5	88.3
180 to 325	ELL168	180	237.1	1.32	90.0	1.5	91.5
	DSBC103	200	202.6	1.01	92.5	6.3	98.8
	CIT 105	215	308.4	1.43	82.5	5.1	87.6
	MACA144	323	334.5	1.04	78.7	6.0	84.7
	FRA159	325	344.0	1.06	75.0	1.6	76.6
	5	1,243.0	1,426.6	1.1	83.8	4.1	87.9
Totals	131	7,037.0	10,288.3	1.5	59.5	11.9	71.4