

y Accessibility

P and Analysis

With Student Academic

ore o

rs

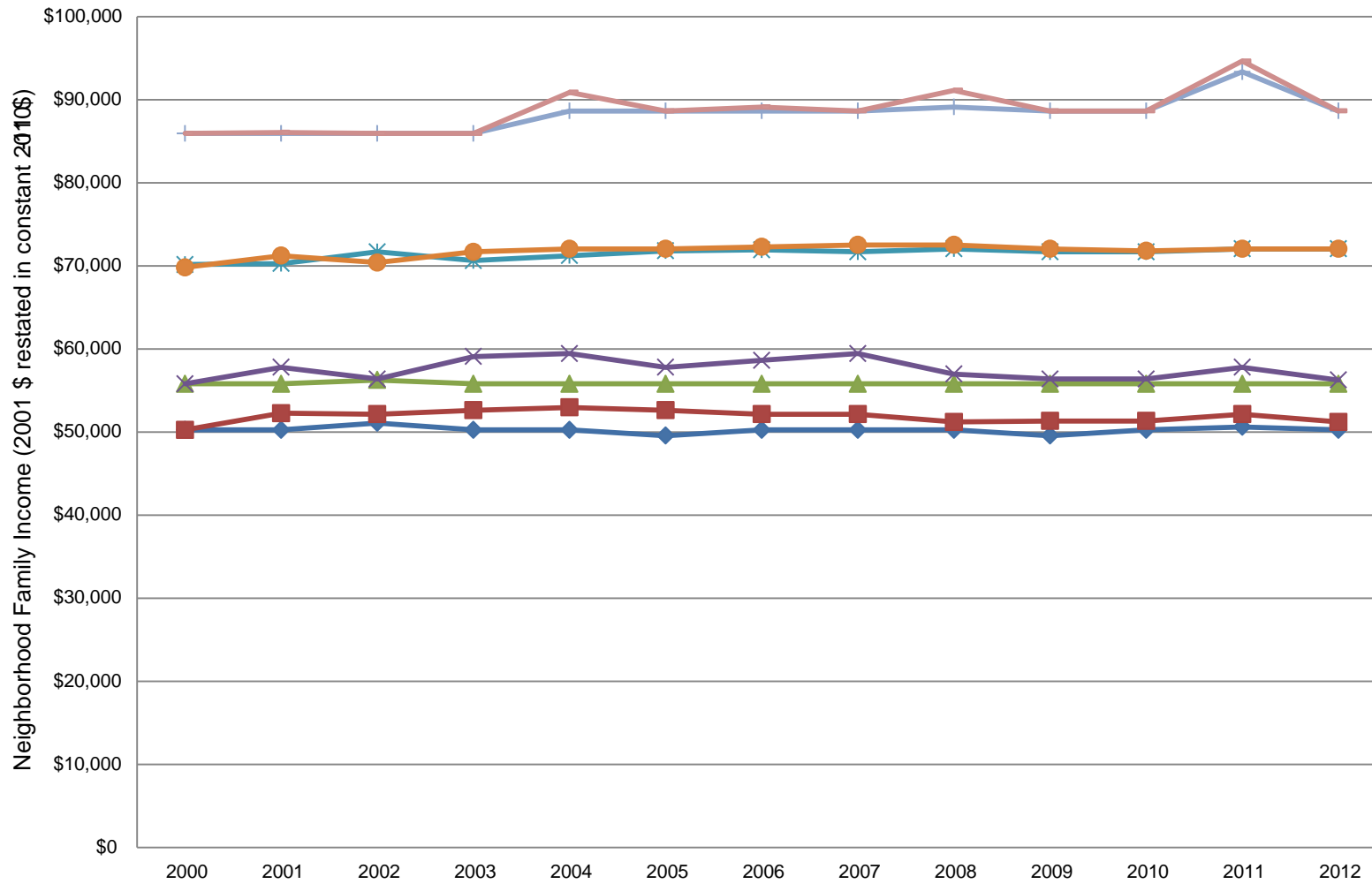
used as a proxy for the distribution of household incomes of UVic applicants and registrants.

The data for this study was drawn from two sources: a combined data file of BC grade 12 applicants and registrants to the University of Victoria; and, a special tabulation file from Statistics Canada of 2001 BC Tax Filer data that includes

Table 1:
Neighborhood Family Incomes of UVic Applicants and Registrants
From BC Grade 12 (2001 dollars restated to 2010-11)

2000	2001	2002	2003	2004
------	------	------	------	------

Neighborhood Family Income of BC Grade 12 Applicants



Provincial Average: \$20,000

