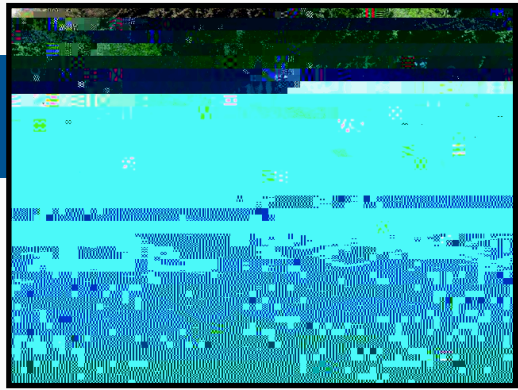


Introduction to



Introduction to Philosophy of the Social Sciences

Take-home Exams

You'll have one week to write each of the take-home exams. Unexcused **late submissions** will immediately lose 5% and will lose an additional 5% every 24 hours. If the lateness was

Introduction to Philosophy of the Social Sciences

Course Schedule

Readings marked **C/M** are in Cartwright and Montuschi.

Readings marked **R** are in Rosenberg.

Readings marked **B** are available through Brightspace.

Any changes to the schedule will be announced in class and posted on the Brightspace page.

Introduction to Philosophy of the Social Sciences

Course Schedule

November 2, 3, 5	Chapter 8: European Philosophy of Social Science R Chapter 9: Holism and Antireductionism in Sociology and Psychology R				
November 9	Q u i z 3 opens at noon —closes at 8 p.m.				
<i>R</i>	<i>B</i>	<i>N</i>	<i>10</i>	<i>N</i>	<i>12</i>
November 16, 17, 19	Sharon Crasnow "Feminist Standpoint Theory" C/M Alison Wylie "Community-Based Collaborative Archaeology" C/M Inkeri Koskinen "Critical Subjects: Participatory Research Needs to Make Room for Debate" B				
November 23, 24, 26	Chapter 10: Functionalism as a Research Program R Mark Risjord "No St(i) -0.2 (i) -0.T" No "N" N (g.2 (s) -0 450.Ch) 0.1 (a) -0.1(