

COMMUNITY-UNIVERSITY ENGAGEMENT 2021

Collective impact for a more equitable, just and sustainable future



We acknowledge with respect the Lekwungen peoples on whose traditional territory the University of Victoria stands and the Songhees, Esquimalt and WSÁNE peoples whose historical relationships with the land continues today.



“Our future, and the well-being of all our children rests with the kind of relationships we build today”.

– Chief Dr. Robert Joseph, A Hereditary Chief of the Gwawaenuk First Nation



INTRODUCTION

The University of Victoria's (UVic) vision is to “integrate outstanding scholarship, engaged learning and real-life involvement to contribute to a better future for people and the planet.” The university's [Strategic Framework](#) highlights our ongoing commitment to excellence in community-engaged research and innovation to advance human knowledge, improve and enrich lives, tackle global challenges and promote the sustainability of the planet. Partnerships and community engagement are integral to this work and are woven into all six priorities of the Strategic Framework.

UVic is committed to working together with communities and key partners to co-create positive change. Continuing to support and build on the wide range of outstanding work already underway across campus and with partners, UVic is developing a Community-University Engagement (CUE) Collective Impact initiative.

The CUE Collective Impact initiative will animate UVic's Strategic Framework, and more specifically activate our efforts on Strategic Priority #6: Engage Locally and Globally. This initiative will support UVic and its partners to reach shared goals while upholding past and present experiences, relationships and knowledge in CUE. It will provide greater alignment between engagement priorities and the Strategic Framework, enhance co-ordination and synergies across the university and support the co-development of university-wide engagement goals, and strategic priorities for CUE.

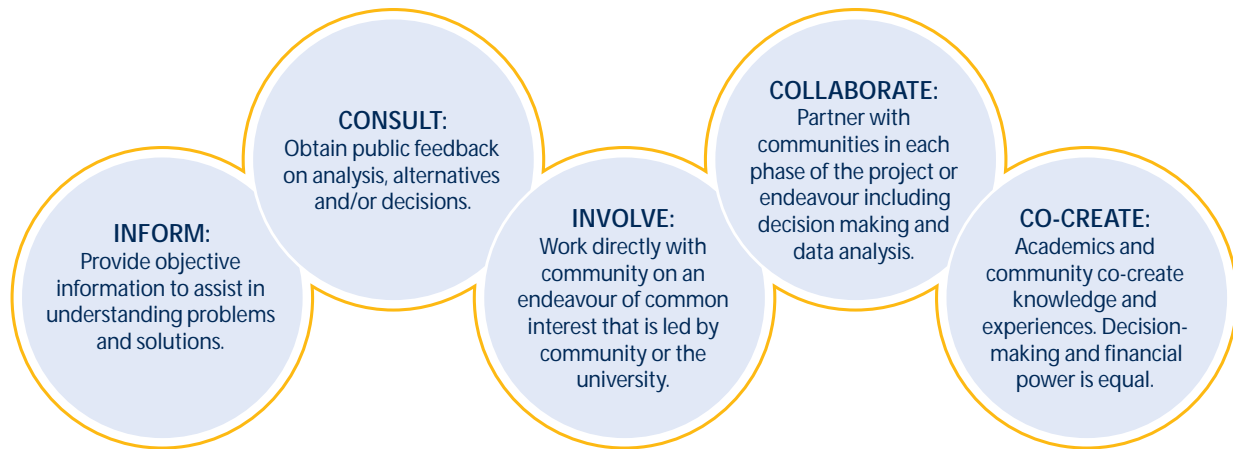
HOW WE GOT HERE

In the fall of 2018, UVic's Community Engagement and Partnerships Advisory Committee (CEPAC) came together to discuss how to advance our new Strategic Framework commitments with respect to community-university engagement (i.e., Engage Locally and Globally). CEPAC's diverse representation with participation from Research, External Affairs as well as Faculty provides an opportunity for cross-portfolio collaboration and representation from members with a wide range of experience, background and goals.

TCEPIbelidvance o222l oat's CommunUty-university(')llth r&#s ias)-10.9wi ashelp(tf)1\$olio)TJETEMC /P Lang (4-US)/MCID 0

HOW WE ENGAGE

There are a number of ways UVic faculty, students and staff engage the broader community.



OUR GOAL

To engage our university community and external partners to develop and nurture mutually beneficial, inclusive and strategic partnerships that positively impact people and the planet.

GUIDING PRINCIPLES

The following principles guide UVic's decisions and actions related to community-university engagement:

Strategic Alignment:	CUE initiatives are aligned with the Strategic Framework and bring the Strategic Framework and other institutional plans to life.
Relevance:	Partnerships are focused on ideas and innovation grounded in issues, opportunities and applications to help solve real world problems.
Reciprocity:	Initiatives provide mutual benefit to the university and its partner(s) and help realize shared goals.
Accountability:	We recognize our responsibilities to contribute to the well-being of the university and the broader community.
Equity:	We strive to ensure that all voices are heard and that all community members have an equal opportunity to participate in the process.

GROWING OUR COLLECTIVE IMPACT – A PROCESS FOR WORKING TOGETHER

Our goal, through the collective impact initiative, is to make ourselves stronger than the sum of our parts and advance work at an institutional/campus-wide and strategic level, while supporting and celebrating the outstanding everyday work of faculty, instructors, researchers, staff, students and community partners.

Finding solutions to complex problems is best done with diverse groups of people, all of whom bring different knowledge, expertise and experience to the table. Engaging in cross-sector collaboration, with people who agree on a common agenda and structure to address a challenging topic is known as collective impact. The CUE Collective Impact initiative aims to stimulate alignment between existing and new initiatives that support engagement in key priority areas.

Collective impact strategies bring together a broad spectrum of public, private and civil society organizations to catalyze action-oriented partnerships in solving challenges. These partnerships generate a mutually beneficial and enabling environment in which the co-creation of knowledge can address local and global challenges and drive sustainable change. The outcomes of these partnerships usually are place-based and context-specific to a city or region, and are designed to drive change across entire systems.



